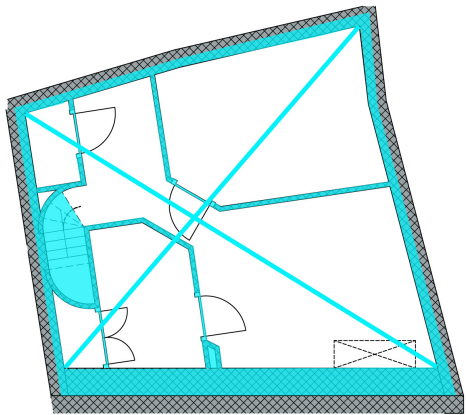


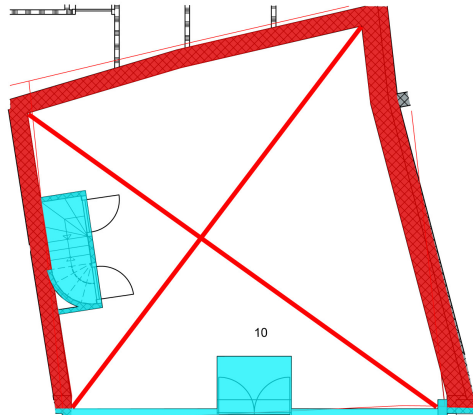
ROGGENSTRAAT 10 in ZWOLLE

Faseringsplattegronden

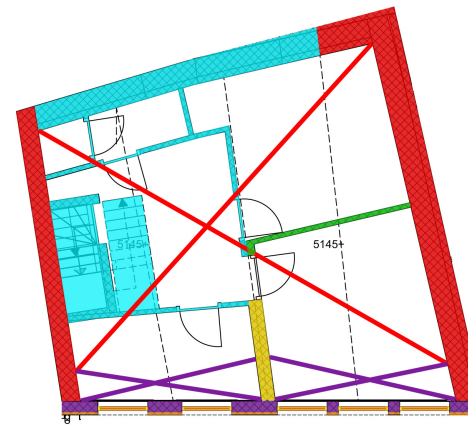
- 1350-1450: bouw dwarshuis
- 1600-1700: verhoging
- 1700-1832: splitsing
- 1875: modernisering gevel en vensters
- 1900-1940: verbouwing winkel-woonhuis
- 1967-heden: latere veranderingen
- fasering balklaag of kap



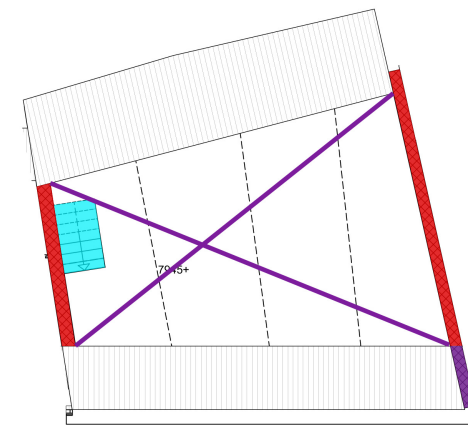
kelder bestand



begane grond bestand







1e verdieping bestand

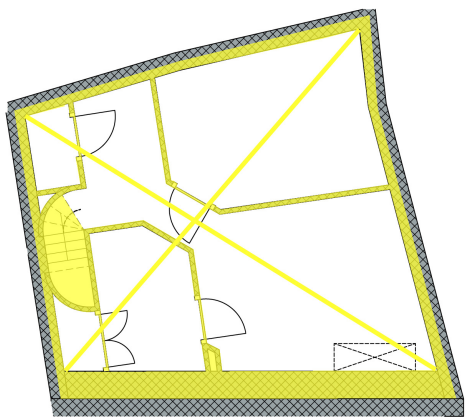


2e verdieping bestand

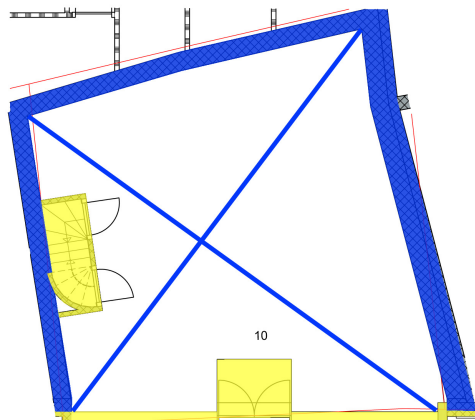
ROGGENSTRAAT 10 in ZWOLLE

Waardestellingsplattegronden

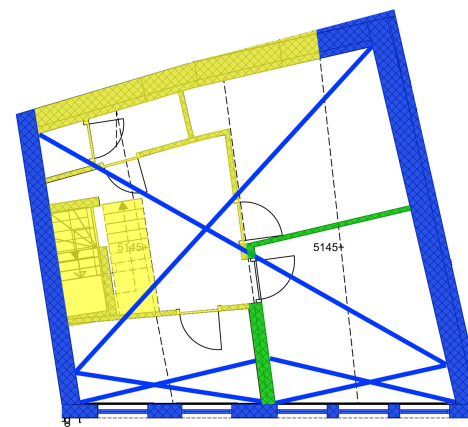
-  hoge monumentwaarden
-  positieve monumentwaarden
-  indifferente monumentwaarden
-  monumentwaarden van balklaag of kap



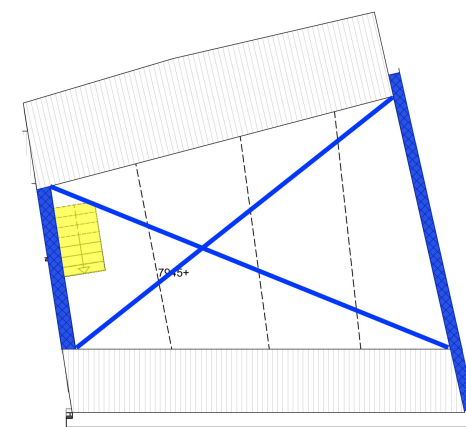
kelder bestand



begane grond bestand



1e verdieping bestand



2e verdieping bestand