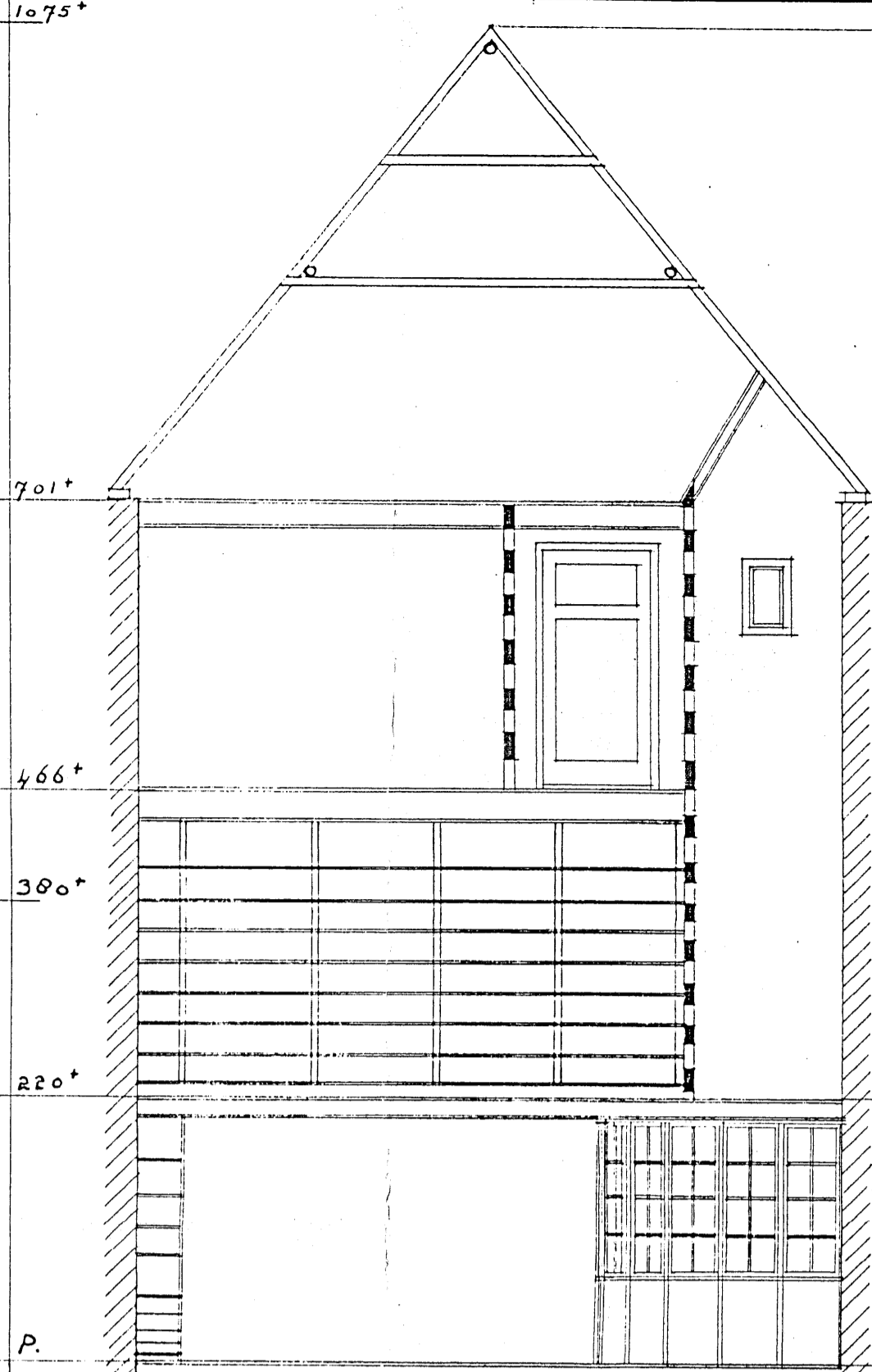
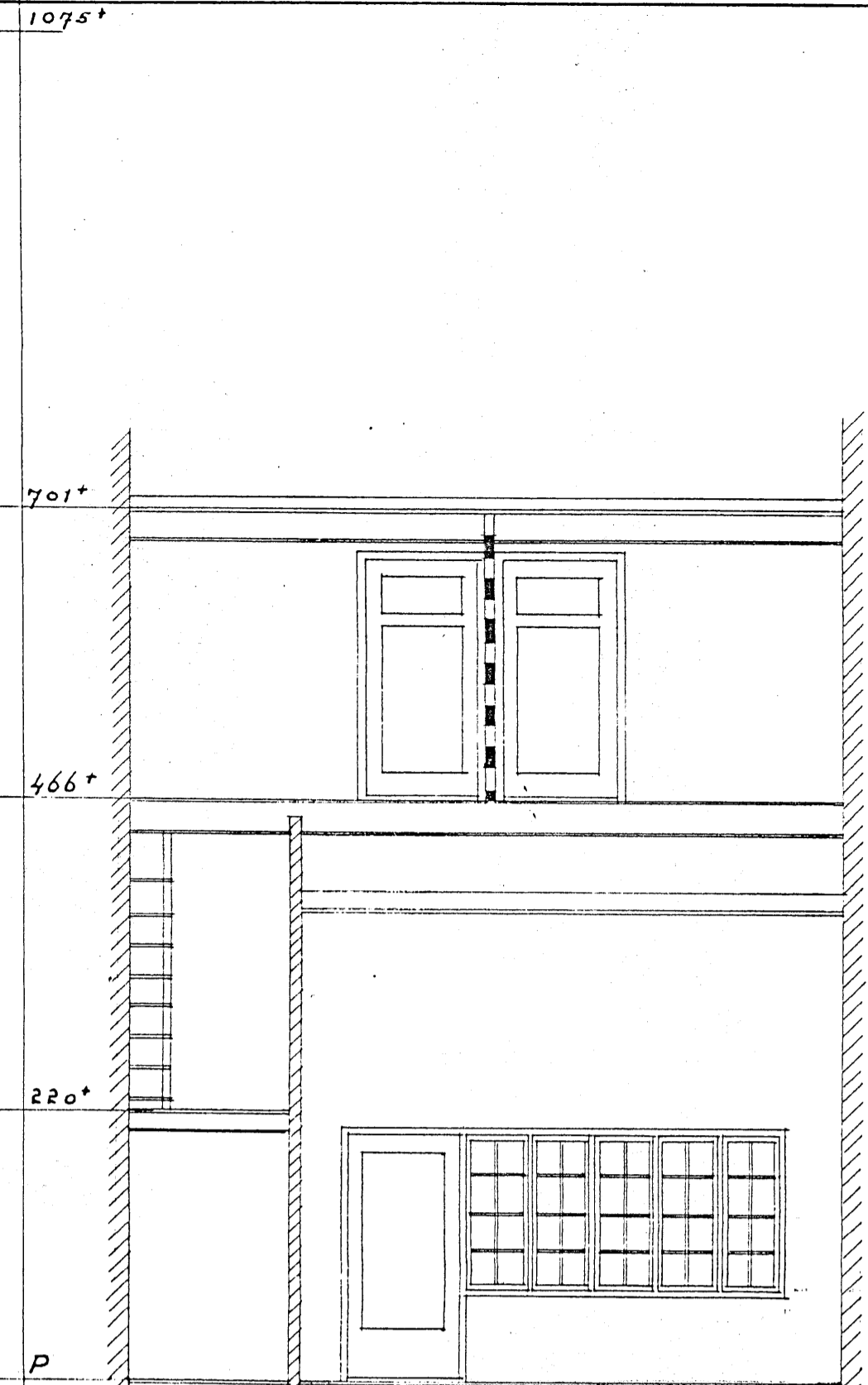


Doorsn. A-A.



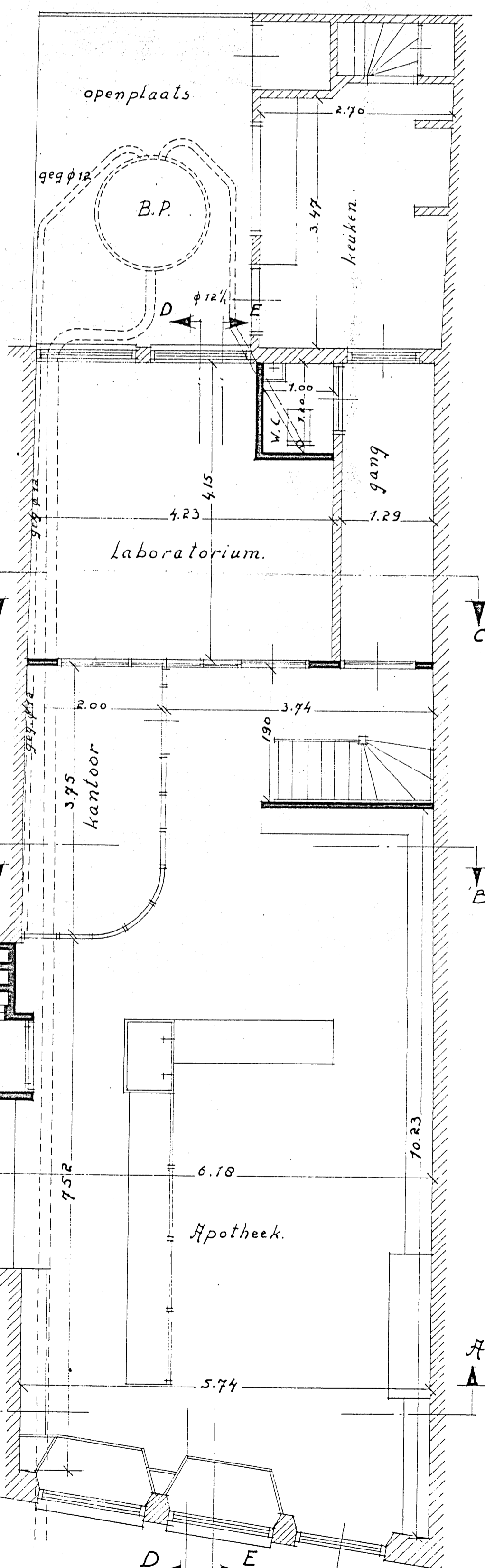
Doorsn. B-B.



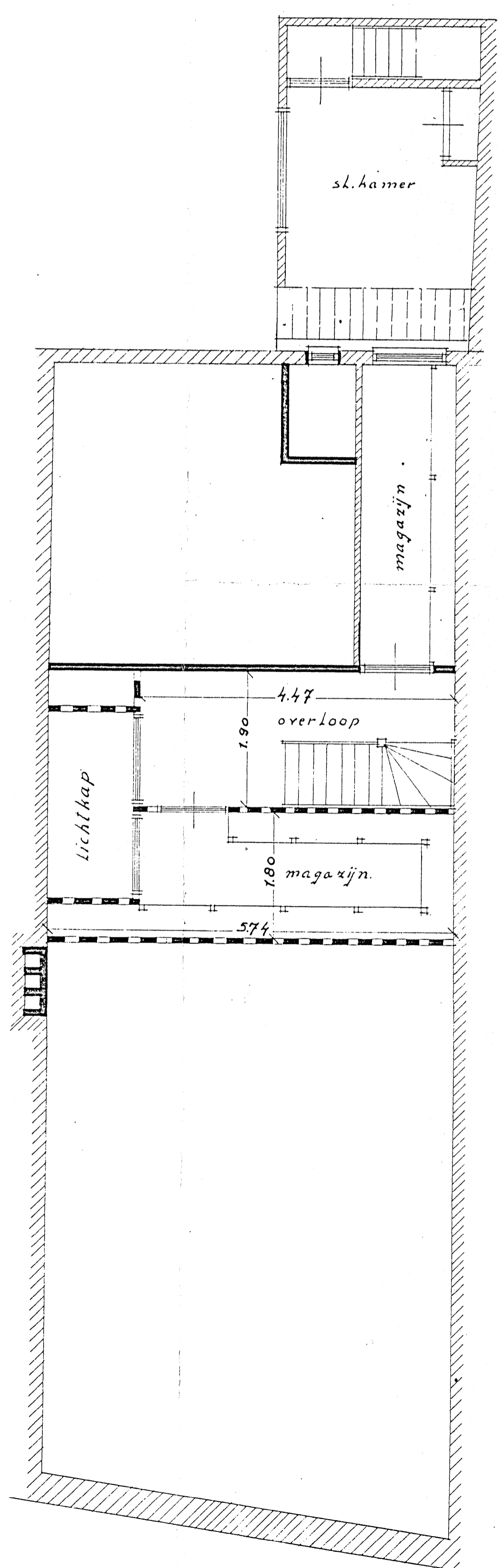
Doorsn. C-C.



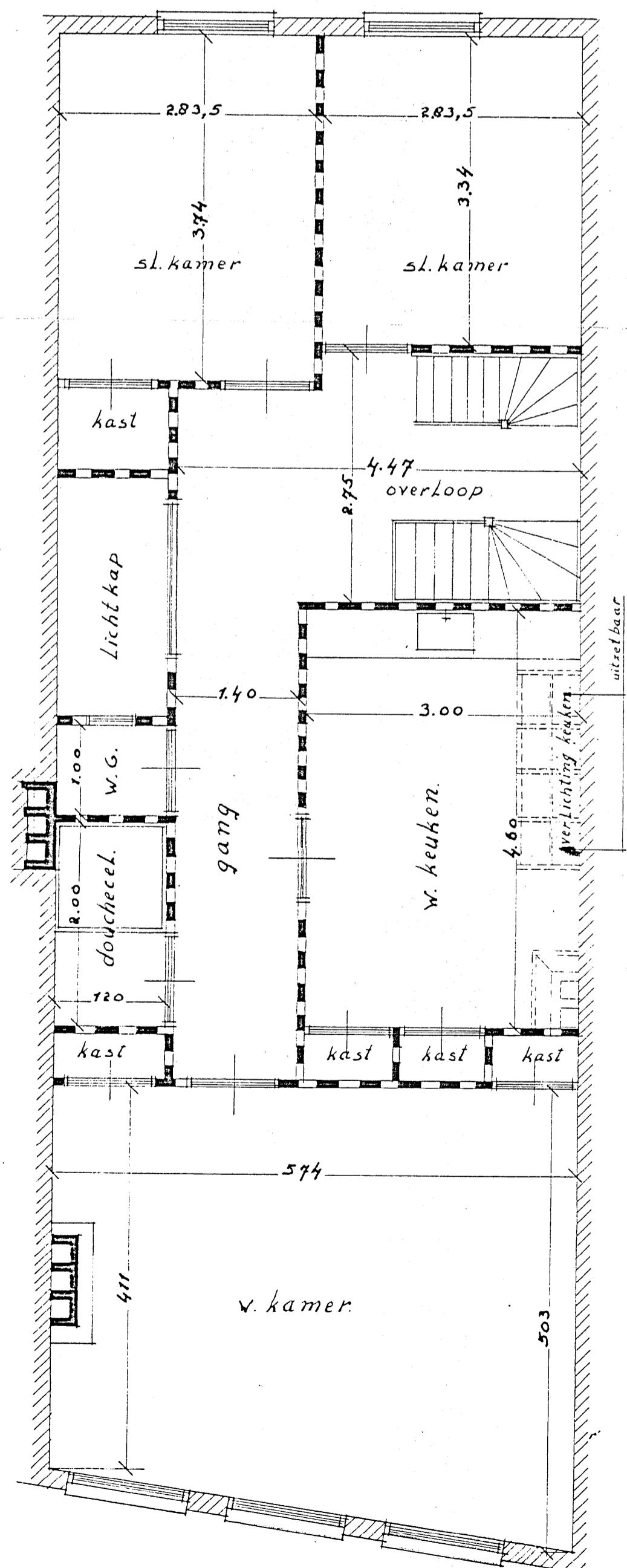
Doorsn. D-D.



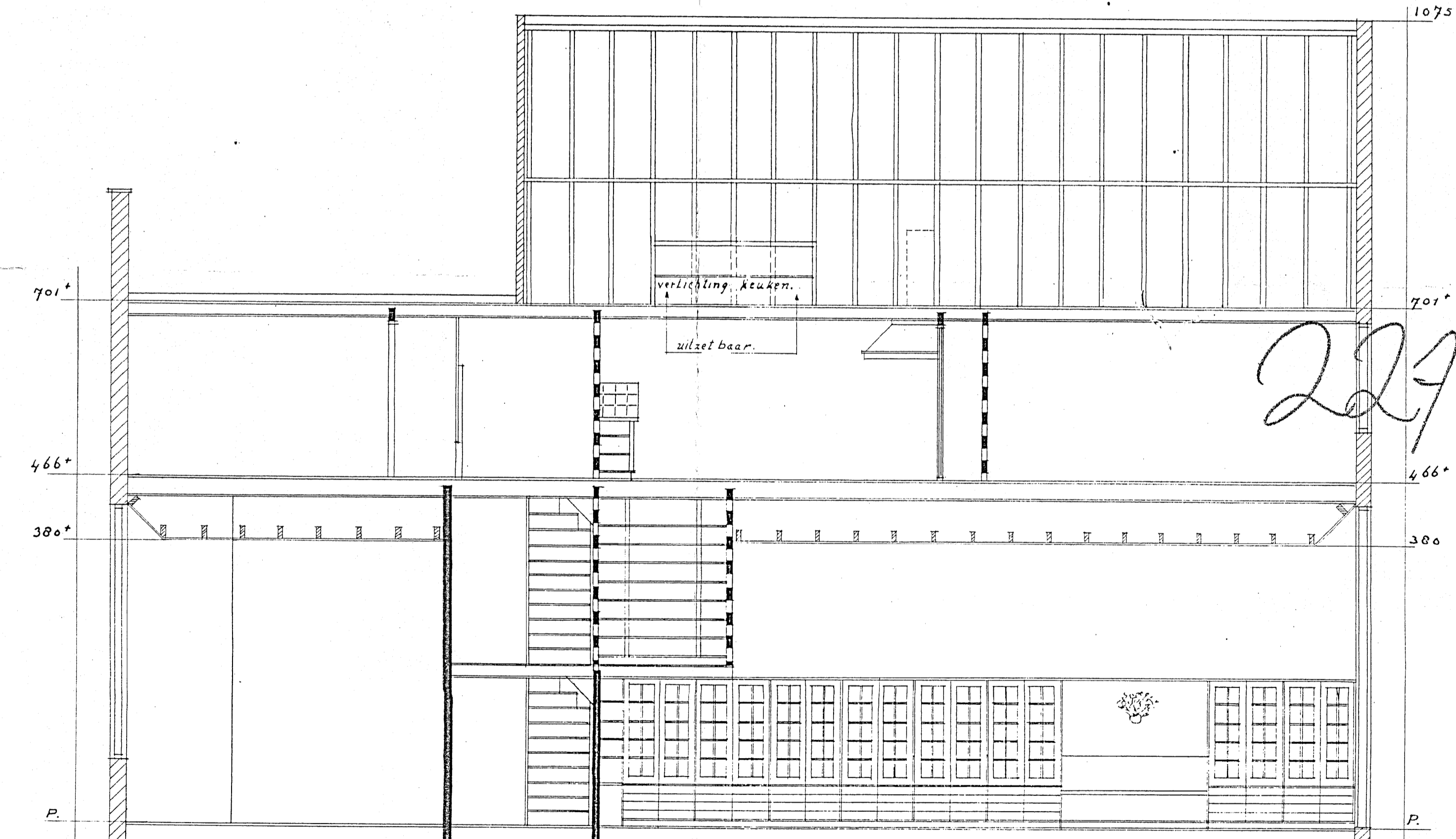
Platte grond.



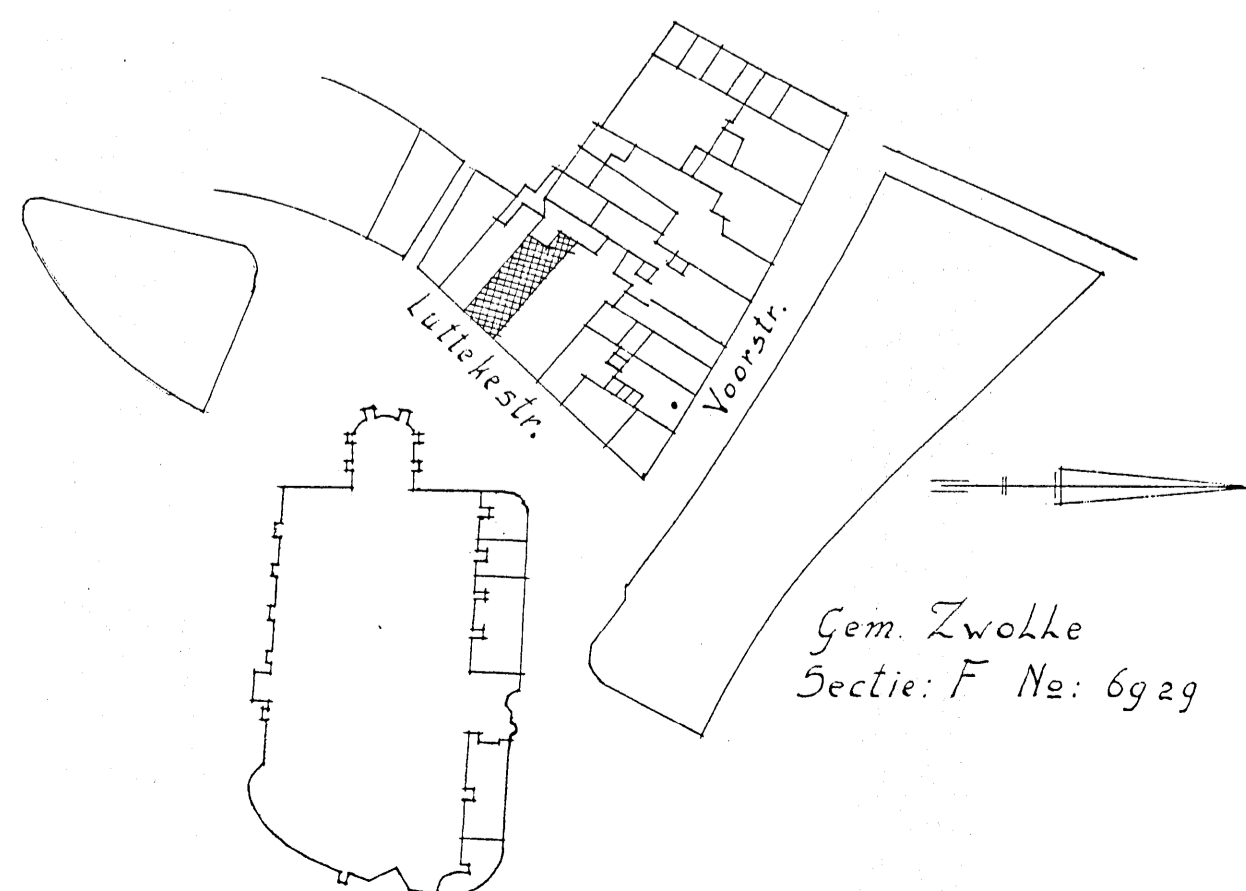
Tussen verdieping



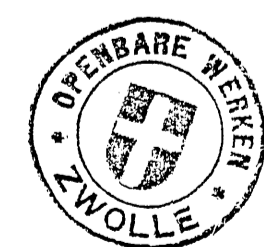
Verdieping



Doorsn. E-E.



Gem. Zwolle
Sectie: F No: 6929



Behoort bij besluit van burgemeester en
Wethouders van Zwolle d.d. 1917
Bl. Afdeling No 43

[Signature]
SECRETARIS



Verbouwing Fa. Camp v. Oord Lutkestr 12 Zwolle.

Arch. Gebr. Boxman, B.N.F.
Zwolle