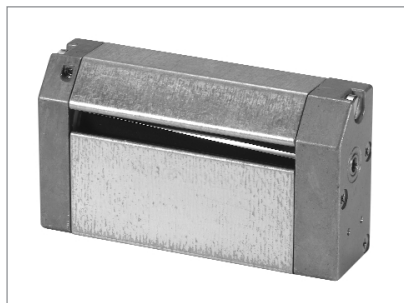


64, 90 and 120 mm



- High cutting capacity
- Variable cutting width
- Compact design
- Knife guard
- Easy to install

SPECIAL FEATURES

- Paper channel width 64 to 120 mm
- Permissible paper weight 60 – 200 g/m²
- Operating voltage 12 or 24 V DC
- Sturdy metal construction
- Integrated motor drive
- Full cut

MECHANICAL CONSTRUCTION

Metal housing, bright finish with bright metal side parts and zinc metal covers on drive and knife side.

FUNCTIONAL DESCRIPTION

This cutter works with a double-edged, self-sharpening rotary knife, resulting in a high number of cuts and short cycle times.

A DC motor and a multiple reduction gear provide for a powerful drive with comparatively low power consumption and compact size. After cutting has been triggered by a starting pulse, the cutting procedure itself is carried out automatically until the rotary knife is slowed down again in its home position without wear.

STANDARD VERSIONS

Operating voltage in VDC	Paper channel width in mm	Permissible paper weight in g/m ²	Item No.
12	64	200	0 685 020
24	64	200	0 685 021
12	90	200	0 685 026
24	90	200	0 685 027
12	120	200	0 685 022
24	120	200	0 685 023

TECHNICAL DATA

Paper channel width	64 – 120 mm		
Permissible paper weight	120 g/m ² ¹⁾		
Operating voltage	12 V DC ± 10 %	24 V DC ± 10 %	
Power consumption at start up	1,9 A	1,2 A	
Power consumption in operation	0,70 A	0,40 A	
Type of cut	by SPDT contact		
Pulse length	150 - 400 msec		
Cutting cycle	800 ms.		
Operating temperature	– 10 °C to + 60 °C		
Storage temperature	– 40 °C to + 60 °C		
Service life	approx. 1.000.000 cuts ¹⁾		
Weight	for paper channel width 64 mm	330 g	
	for paper channel width 90 mm	380 g	
	for paper channel width 120 mm	415 g	
Dimensions (W x D x H) in mm	for paper channel width 64 mm	50 x 25 x 91	
	for paper channel width 90 mm	50 x 25 x 117	
	for paper channel width 120 mm	50 x 25 x 147	

¹⁾ Specified service life typ. for standard paper 200 g/m².

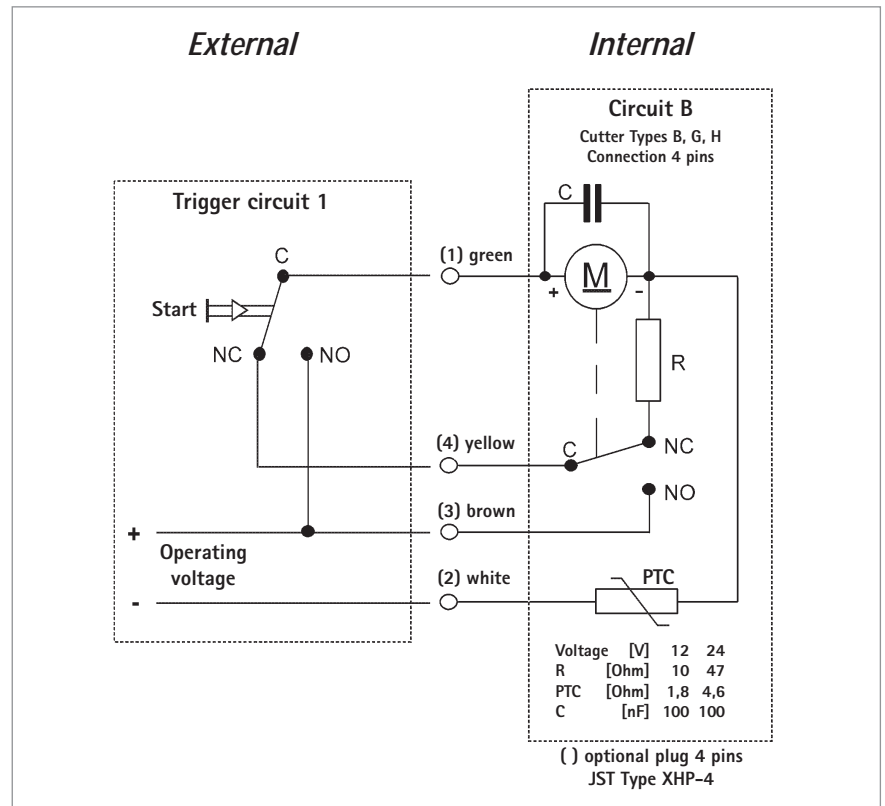
Customers are requested to perform a trial run if special papers are to be used.

Cutter G

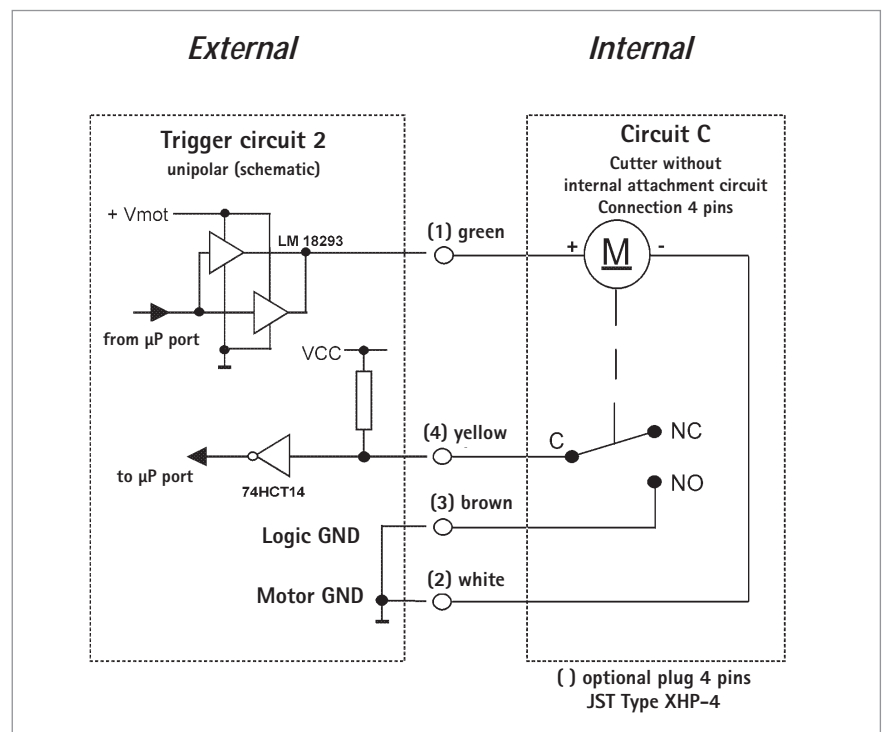
64, 90 and 120 mm

Series 685.0

SUGGESTED
CONNECTION DIAGRAM 1



SUGGESTED
CONNECTION DIAGRAM 2

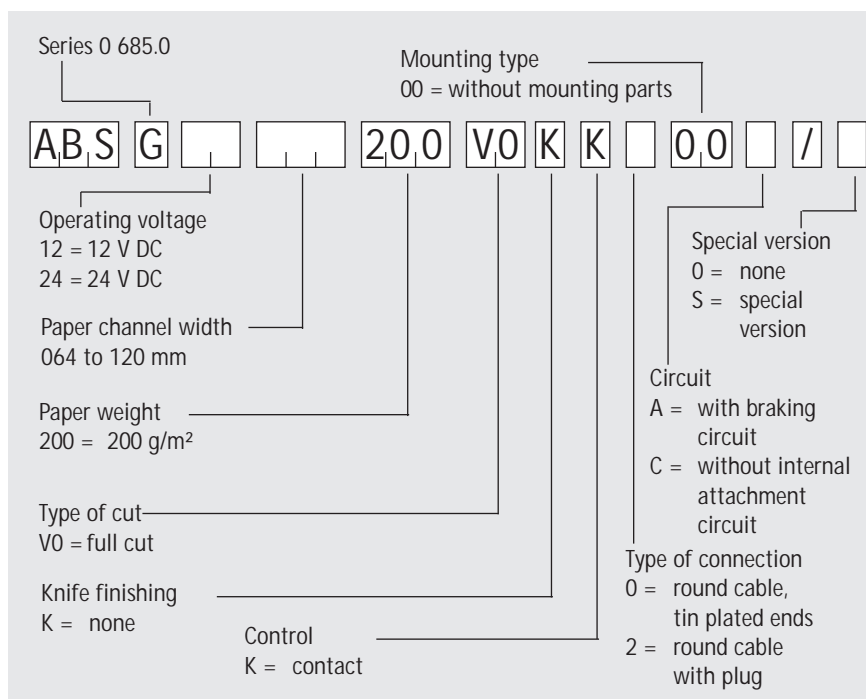


Cutter G

Series 685.0

64, 90 and 120 mm

TYPE CODE



EXAMPLE FOR ORDER INFORMATION

Designation	Item No.
ABS G 24 120 200 V0 KK000B/0	0 685 023

DIMENSIONED DRAWINGS

Dimensioned drawing	Filename
Cutter G 64 mm - 120 mm	0685 986.pdf

MANUALS

Designation	Filename
Installation manual, German	2 685 575.pdf
Installation manual, English	2 685 576.pdf
Installation manual, French	2 685 577.pdf

Please find the up to date dimensioned drawings/documents as PDF-files on our homepage <http://www.hengstler.com> or request them by e-mail, fax or post from us.
All technical data is subject to alterations.