

Pro-face

by Schneider Electric

Basic HMI
ST6000 Series



Powered by  BLUE

Achieve a high level of visualization with the New Basic HMI

Refined

An innovative HMI with a sophisticated design that transforms simple machines.



Simple & Easy

The simple design and interface help increase productivity and efficiency.



Connected & Secured

Seamless connectivity with various devices to enhance their flexibility and increase value.



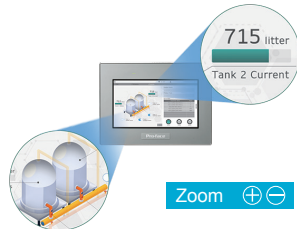


Achieve a high level of visualization with the new basic HMI

Optimize operations and machine information

Better Graphics and Font

Display beautiful fonts with anti-aliasing. Customize gradation and transparency to meet your needs.



Multi-screen

Simply display all necessary screens in one place.



Responsive Behavior

Adapt the size of information to meet your needs with one click on the dynamic display.



Theme and Color Set

2 themes and 10 color sets support the user in simply rendering displays. Customize your display by simply choosing a theme and color set.



Easily Identify Patterns

Using various features, including comparisons graphs, can be more expressive than ever before.



Reduce time required to create screens with new design methods

Powered by



Download



- Manual
- Software
- Datasheet

	ST-6200WA	ST-6400WA	ST-6500WA	ST-6600WA	ST-6700WA
Display	4.3" Wide (480 x 272)	7.0" Wide (800 x 480)	10.1" Wide (1,024 x 600)	12.1" Wide (1,280 x 800)	15.6" Wide (1,366 x 768)
	16M colors White LED 16 level brightness control				
Touch Panel	Type : Resistive film (analog), Service life : 1,000,000 times or more				
Interface	COM1 : RS-232C / 422 / 485 Ethernet : IEEE802.3i / IEEE802.3u, 10BASE-T / 100BASE-TX x 1 USB : Type A x 1, micro-B x 1	COM1 : RS-232C, COM2 : RS-422 / 485 Ethernet : IEEE802.3i / IEEE802.3u, 10BASE-T / 100BASE-TX x 2 USB : Type A x 1, micro-B x 1			
Input voltage	19.2 to 28.8 Vdc				
Certifications	IP65, IP65F, Type 1, Type 4X (indoor use only), Type 13 (on the front panel when properly installed in an enclosure), CE, UL and cUL, RCM, KC, EAC, RoHS, WEEE				

Please check our website for more details.

⚠ WARNING

HAZARD OF OPERATOR INJURY, OR UNINTENDED EQUIPMENT DAMAGE
Before operating any of these products, be sure to read all related manuals thoroughly. Failure to follow these instructions can result in death, serious injury or equipment damage.

- For printing purposes, the colors in this catalog may differ from those of the actual unit.
- Actual user screens may differ from the screens shown here.
- Electrical equipment should be installed, operated, serviced, and maintained only by qualified personnel. No responsibility is assumed by Schneider Electric Japan Holdings Ltd. for any consequences arising out of the use of this material.
- All product names used in this catalog are the registered trademarks or trademarks of their respective companies.
- All information contained in this catalog is subject to change without notice.

Pro-face
by Schneider Electric

Visit our website for more information.
www.proface.com

Global Headquarters
Schneider Electric Japan Holdings Ltd.
[JAPAN] Tel: +81-(0)6-6208-3133

North/South American Headquarters
Pro-face America, Inc.
[U.S.A.] Tel: +1-734-477-0600

European Headquarters
Pro-face Europe B.V.
[THE NETHERLANDS] Tel: +31 (0)23 55 44 099