

# User Manual

## DuraPanel Series

DuraPanel 7"

DuraPanel 12"



## Disclaimer

ISIC A/S makes no representation or warranties with respect to the contents or use of this manual, and specifically disclaims any express or implied warranties of merchantability or fitness for any particular purpose. Further, ISIC A/S reserves the right to revise this publication and to make changes to its content at any time, without obligation to notify any person or entity of such revisions or changes.

**Image sticking:** If the monitor is operated with static images (logo's etc) it will inevitably lead to images sticking on the display (like on old CRT's). This is not a permanently situation and can be removed by operating the monitor with a completely black screen.

## FCC Warning

Computing devices and peripherals generate and radiate radio frequency energy, and if not installed and used in accordance with the instructions advised by ISIC A/S, it may cause interference to radio communication.

The DuraPanel series, manufactured by ISIC A/S, is designed to comply with the emerging generic EEC standards, that cover applications in maritime environment.

## Classification

The monitor is classified as "protected from the weather" according to IEC 60945 ed.4 (former class b).

## Approvals

Approval according to IACS E10 ed. 6 and IEC 60945 ed. 4, Maritime navigation and radio communication equipment and systems – General requirements.



ISIC A/S is complying with the WEEE directive within the European Union, stating that electronic and electric products must be collected separately. Products are marked according to the directive.

Copyright 2015 ISIC A/S  
ISIC PN: 07353-000 rev. B

ISIC A/S  
Edwin Rahrsvej 54  
DK-8220 Brabrand  
Denmark

Phone: +45 70 20 70 77  
Fax: +45 70 20 79 76  
Web: <http://www.isic-systems.com>

## Table of Contents

1	FEATURES .....	4
2	GENERAL CONSIDERATIONS ON INSTALLATION AND OPERATION .....	4
3	DURAPANEL CONNECTIONS .....	5
4	CONNECTOR PIN-OUT .....	6
5	TECHNICAL SPECIFICATION DURAPANEL 7 .....	8
6	TECHNICAL SPECIFICATION DURAPANEL 12 .....	9
7	MECHANICAL OUTLINE DURAPANEL 7 – DROP IN .....	10
8	MECHANICAL OUTLINE DURAPANEL 7 – FLUSH MOUNT .....	11
9	MECHANICAL OUTLINE DURAPANEL 7 – RETROFIT .....	12
10	MECHANICAL OUTLINE DURAPANEL 7 – SIMULATION .....	13
11	MECHANICAL OUTLINE DURAPANEL 7 – OPTIONAL FAN .....	14
12	MECHANICAL OUTLINE DURAPANEL 12 INCH - FLUSH .....	15
13	MECHANICAL OUTLINE DURAPANEL 12 INCH - RETROFIT .....	16
14	MECHANICAL OUTLINE DURAPANEL 12 INCH – DROP IN .....	17
15	DURA COMMUNICATION PROTOCOL .....	18
16	BACKLIGHT, COLOR ... ETC SETTINGS .....	22
17	COMPASS SAFE DISTANCE .....	23
18	POWER CONSUMPTION .....	23
19	IN RUSH CURRENT .....	23
20	TROUBLESHOOTING .....	23
21	SERVICING THE UNIT .....	23
22	ISIC INFO / SUPPORT .....	24
23	REVISION HISTORY .....	25
24	APPENDIX A: PIXEL POLICY .....	26
25	APPENDIX B: CERTIFICATE OF CONFORMITY .....	29

# 1 Features

Congratulations on your purchase of a DuraPanel. This short form manual is designed to get you started working with your new DuraPanel.

The DuraPanel series of Panel Computers are all designed for the demanding operating conditions at sea.

The DuraPanel series are tested for full compliance to marine-standards IACS E10 and IEC 60945.

The DuraPanel comes with excellent brightness and contrast levels that, together with wide viewing angles, ensure a good readability thus making it very eye-friendly. For the best picture quality, always use a double shielded DVI or VGA cable with ferrites on external monitor.

## 2 General considerations on Installation and Operation

The DuraPanel is designed to work at conditions according to IEC 60945. However, keeping the temperature and vibration level at a minimum will extend the life time of the product. ISIC recommend operating this product at normal room temperature (20-25 °C), with the lowest level of vibration and humidity.

### Installation of the DuraPanel

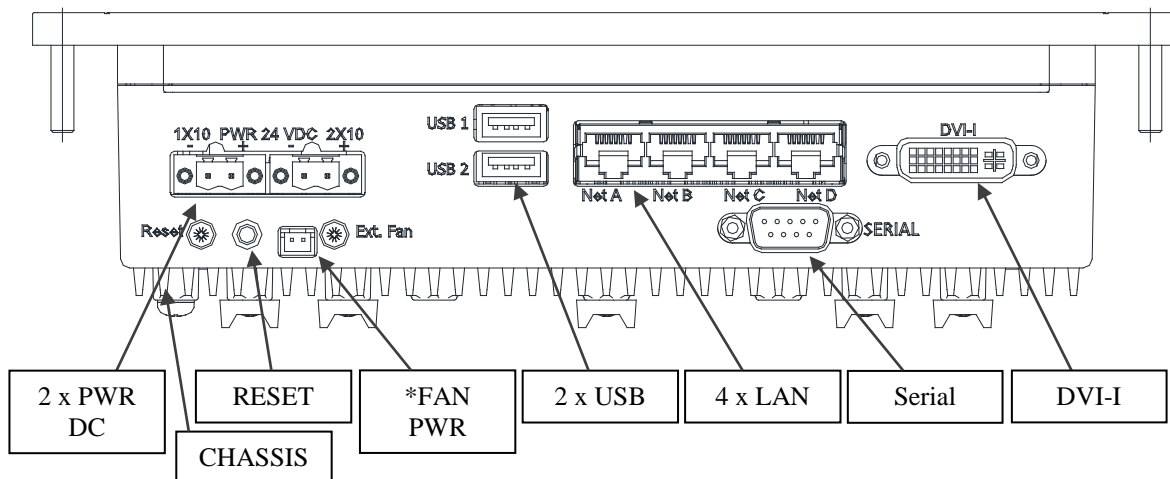
In order to obtain the best possible operating conditions, please note the following precautions.

- Room for cooling.  
When designing the cabinet/console for the DuraPanel, please ensure that air can flow freely around the cabinet, in order to avoid any unnecessary rise in temperature. If it is not possible to have an adequate natural airflow, use a fan to force the airflow to be higher.
- Mounting positions  
The DuraPanel is designed for both horizontal and vertical installation.
- Sunlight  
Avoid direct sunlight to keep temperature low by that improve lifetime.

### 3 DuraPanel connections

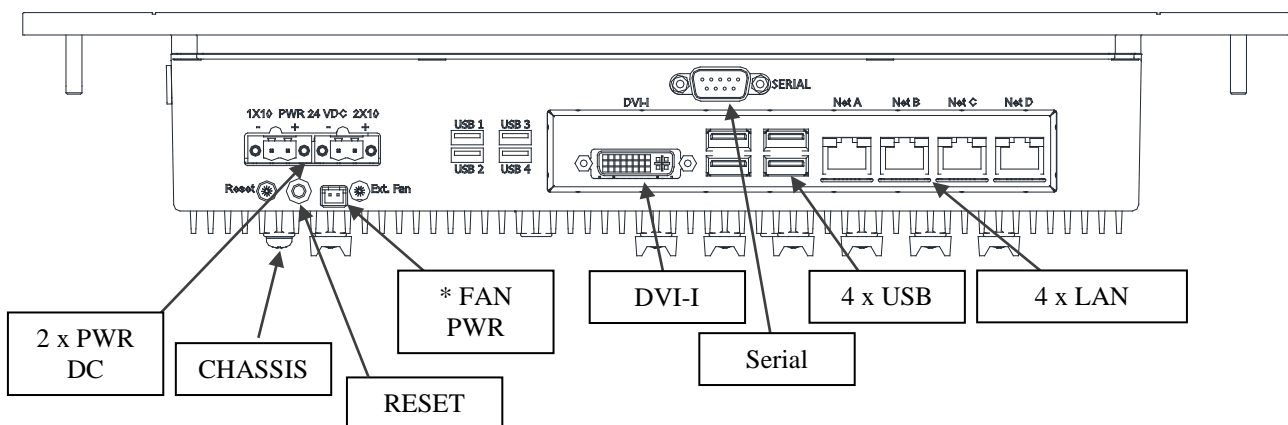
Below is a view of connections to the DuraPanel.

#### 3.1 DuraPANEL7" connections

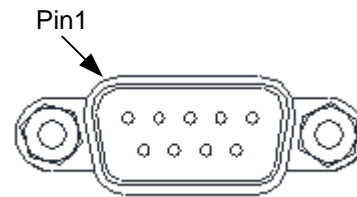


\* Optional fan output.

#### 3.2 DuraPANEL12" connections



## 4 Connector pin-out



Mating part: SUB-D 9 pole female, Norcomp 172-E09-20201 or equivalent.

### 4.1 DuraPANEL7" Serial

COM port used for external communication	COM2
COM port used for internal communication	COM1

Pin	RS-232	RS-422	RS-485
1	DCD	Tx-	D-
2	RxD	Tx+	D+
3	TxD	Rx+	
4	DTR	Rx-	
5	GND		
6	DSR		
7	RTS		
8	CTS		
9	RI		

COM2 settings RS232/422/485 is set in BIOS

### 4.1 DuraPANEL12" Serial

COM port used for external communication	COM1
COM port used for internal communication	COM2

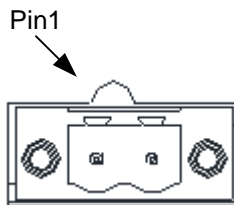
Pin	RS-232	RS-422	RS-485
1	DCD	Rx+	D+
2	RxD	Rx-	D-
3	TxD	Tx+	
4	DTR	Tx-	
5	GND		
6	DSR		
7	RTS		
8	CTS		
9	RI		

COM1 needs to be specified when DuraPANEL12 is ordered.  
RS485 flow control is set in BIOS

## 4.2 Power input

The nominal input power voltage is 24V (18-36VDC). There are two independent galvanic isolated power inputs.

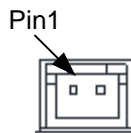
Mating part number: Weidmüller BLZP5.08HC/02/180F



Pin	Power in
1	0VDC
2	24VDC

## 4.3 Fan output

Mating part: JST XHP-2 (housing), SXH-001T-P0.6 (terminal)



Pin	FAN out
1	12VDC
2	0VDC

## 5 Technical specification DuraPanel 7

### DuraPANEL - General

<b>CPU:</b>	Intel® Celeron® Processor J1900, 2.42 GHz (4 Cores / 4 Threads)
<b>Chipset:</b>	Intel® processor Core, Graphics and Memory Controller in a single system-on-chip (SOC) solution
<b>Memory:</b>	1 x SODIMM sockets with 1x 4GB DDR3L 1600MHz mounted <i>Up to 8GB DDR3L SODIMM</i>
<b>Hard Disk Drive:</b>	80GB Intel® S3500 SSD SATA <i>Optional sizes 120GB / 160GB / 240GB / 300GB ... 800GB SSD SATA III</i>
<b>Video:</b>	Intel® HD Graphics controller on-CPU <i>DirectX* 11 and OpenGL 4.0 compliant</i> <i>Dual Independent display capable</i>
<b>External Video out:</b>	1 x DVI-I video output connector
<b>Audio:</b>	Built-in Buzzer (75-85 dB(A) / 1m)
<b>Ethernet:</b>	4 x 10/100/1000 Mbps/s Ethernet LAN on-board, (RJ45) with auto-negotiate <i>2 x Intel and 2 x Realtek</i>
<b>USB:</b>	2 x USB 2.0 (max 0,5 Amp per USB, max 5 Watt total)
<b>COM:</b>	1 x RS232/422/485 (BIOS configurable)
<b>OS:</b>	Windows 7, Windows 8, Linux

### DuraPANEL - Front

<b>Display size:</b>	7 inch LCD (TFT), IPS technology
<b>Resolution:</b>	800 x 480
<b>Active area:</b>	152 x 91 mm
<b>View angle:</b>	89° (T/B), 89° (L/R) (typical)
<b>Luminance:</b>	450 Cd/m <sup>2</sup> (typical) <i>Optional Ambient light sensor</i>
<b>Contrast ratio:</b>	800:1 (typical)
<b>Touch:</b>	10 finger PCAP touch (internal USB interface)
<b>Front glass:</b>	Anti Reflection
<b>Protection:</b>	IP56 (from front, when mounted) IP22 (from rear)

### DuraPANEL - Power

<b>Standard:</b>	18-34VDC Galvanic isolated <i>Optional Dual input DC power, Galvanic isolated</i>
<b>Power Consumption:</b>	P <sub>typ</sub> = 10 Watt, P <sub>max</sub> = 15 Watt

### DuraPANEL - Environmental

<b>Operating Temperature:</b>	-15 to +55 °C
<b>Storage Temperature:</b>	-25 to +70 °C
<b>Relative Humidity:</b>	8 to 95 % (non-condensing)

### DuraPANEL - Approvals

<b>CE Mark:</b>	EN61000-6-2
<b>Marine:</b>	IACS E10 Rev. 5 & IEC 60945 Ed. 4
<b>Shock:</b>	±5G, 10ms in accordance with IEC 60068-2-27
<b>Certificates:</b>	MR certificate

### DuraPANEL - Dimensions

<b>Size:</b>	218 (W) x 147mm (H) x 59mm (Depth behind bezel)
<b>Weight:</b>	App. 2 kg.
<b>Optional Bracket:</b>	Desk/ceiling-and wall-bracket (VESA 75x75mm)
<b>Optional Accessories:</b>	External fan for VESA mounting



## 6 Technical specification DuraPanel 12

### DuraPANEL - General

<b>CPU:</b>	Intel® Celeron® Processor 2980U (2M Cache, 1.60 GHz) (2 Cores / 2 Threads)
<b>Chipset:</b>	Intel® processor Core, Graphics and Memory Controller in a single system-on-chip (SOC) solution
<b>Memory:</b>	2 x SODIMM sockets with 1x 4GB DDR3L 1600MHz mounted <i>Up to 16GB DDR3L SODIMM</i>
<b>Primary Disk Drive:</b>	80GB Intel® S3500 SSD SATA <i>Optional sizes 120GB / 160GB / 240GB / 300GB ... 800GB SSD SATA</i>
<b>Optional Secondary Disk Drive (Removable):</b>	80GB Intel® S3500 SSD SATA (optional) <i>Optional sizes 120GB / 160GB / 240GB / 300GB ... 800GB SSD SATA</i>
<b>Video:</b>	Intel® HD Graphics controller on-CPU <i>DirectX® 11 and OpenGL 4.0 compliant Dual Independent display capable</i>
<b>External Video out:</b>	1 x DVI-I video output connector
<b>Audio:</b>	Built-in Buzzer (75-85 dB(A) / 1m)
<b>Ethernet:</b>	4 x 10/100/1000 Mbps/s Ethernet LAN on-board, (RJ45) with auto-negotiate <i>1 x Intel® I218 and 3 x Intel® I210AT</i>
<b>USB:</b>	4 x USB 3.0 (max 0,5 Amp per USB, max 5 Watt total)
<b>COM:</b>	1 x RS232/422/485 (configurable, choose when place order)
<b>OS:</b>	Windows 7, Windows 8, Linux

### DuraPANEL - Front

<b>Display size:</b>	12,1 inch 16:10 LCD (TFT), MVA technology
<b>Resolution:</b>	1280 x 800
<b>Active area:</b>	261 x 163 mm
<b>View angle:</b>	88° (T/B), 88° (L/R) (typical)
<b>Luminance:</b>	400 Cd/m <sup>2</sup> (typical) <i>Optional Ambient light sensor</i>
<b>Contrast ratio:</b>	1000:1 (typical)
<b>Touch:</b>	10 finger PCAP touch (internal USB interface)
<b>Front glass:</b>	Anti Reflection
<b>Protection:</b>	IP56 (from front, when mounted) IP22 (from rear)

### DuraPANEL - Power

<b>Standard:</b>	18-34VDC Galvanic isolated <i>Optional Dual input DC power, Galvanic isolated</i>
<b>Power Consumption:</b>	P <sub>typ</sub> = 20 Watt, P <sub>max</sub> = 25 Watt

### DuraPANEL - Environmental

<b>Operating Temperature:</b>	-15 to +55 °C
<b>Storage Temperature:</b>	-25 to +70 °C
<b>Relative Humidity:</b>	8 to 95 % (non-condensing)

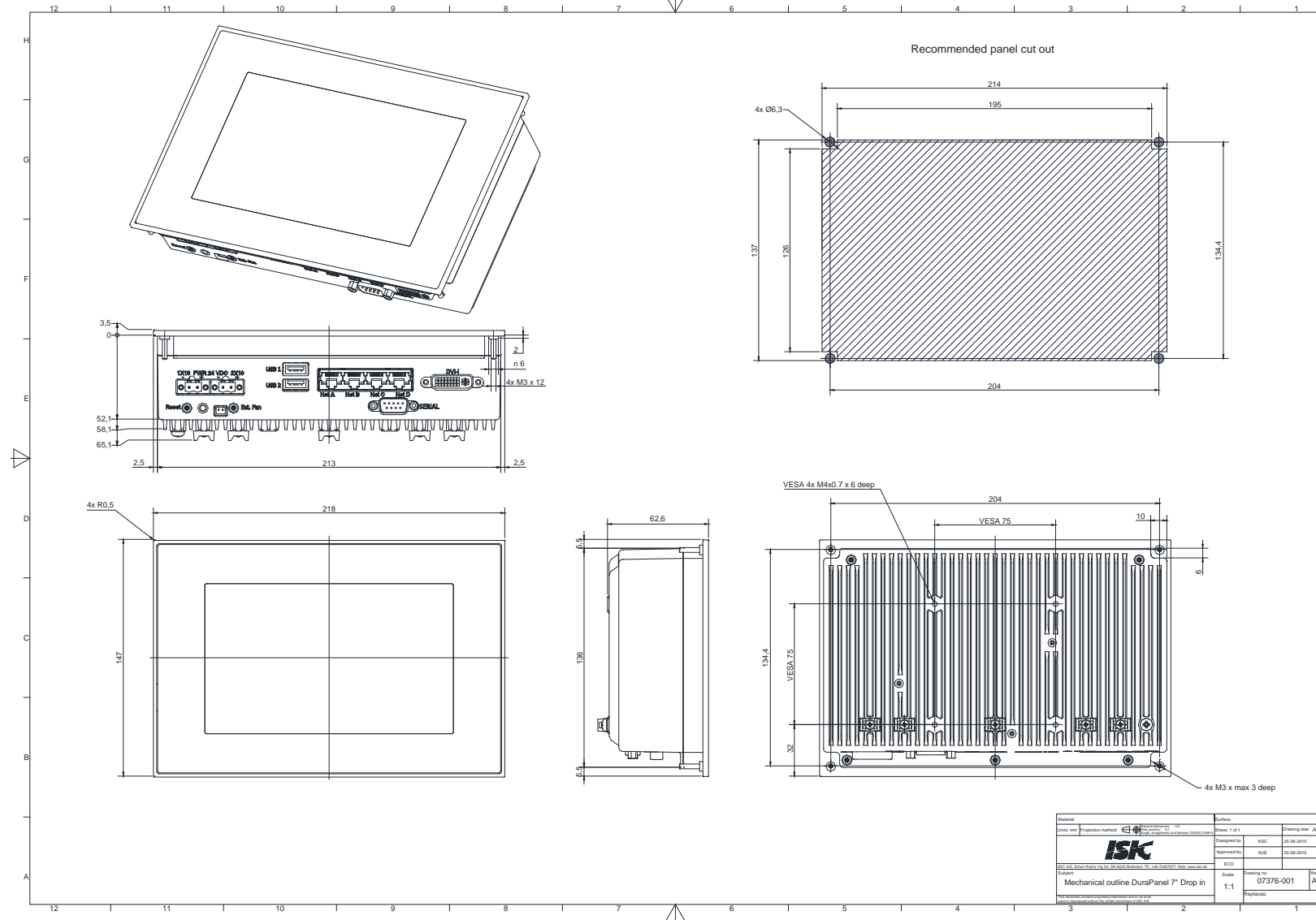
### DuraPANEL - Approvals

<b>CE Mark:</b>	EN61000-6-2
<b>Marine:</b>	IACS E10 Rev. 5 & IEC 60945 Ed. 4
<b>Shock:</b>	±5G, 10ms in accordance with IEC 60068-2-27
<b>Certificates:</b>	MR certificate

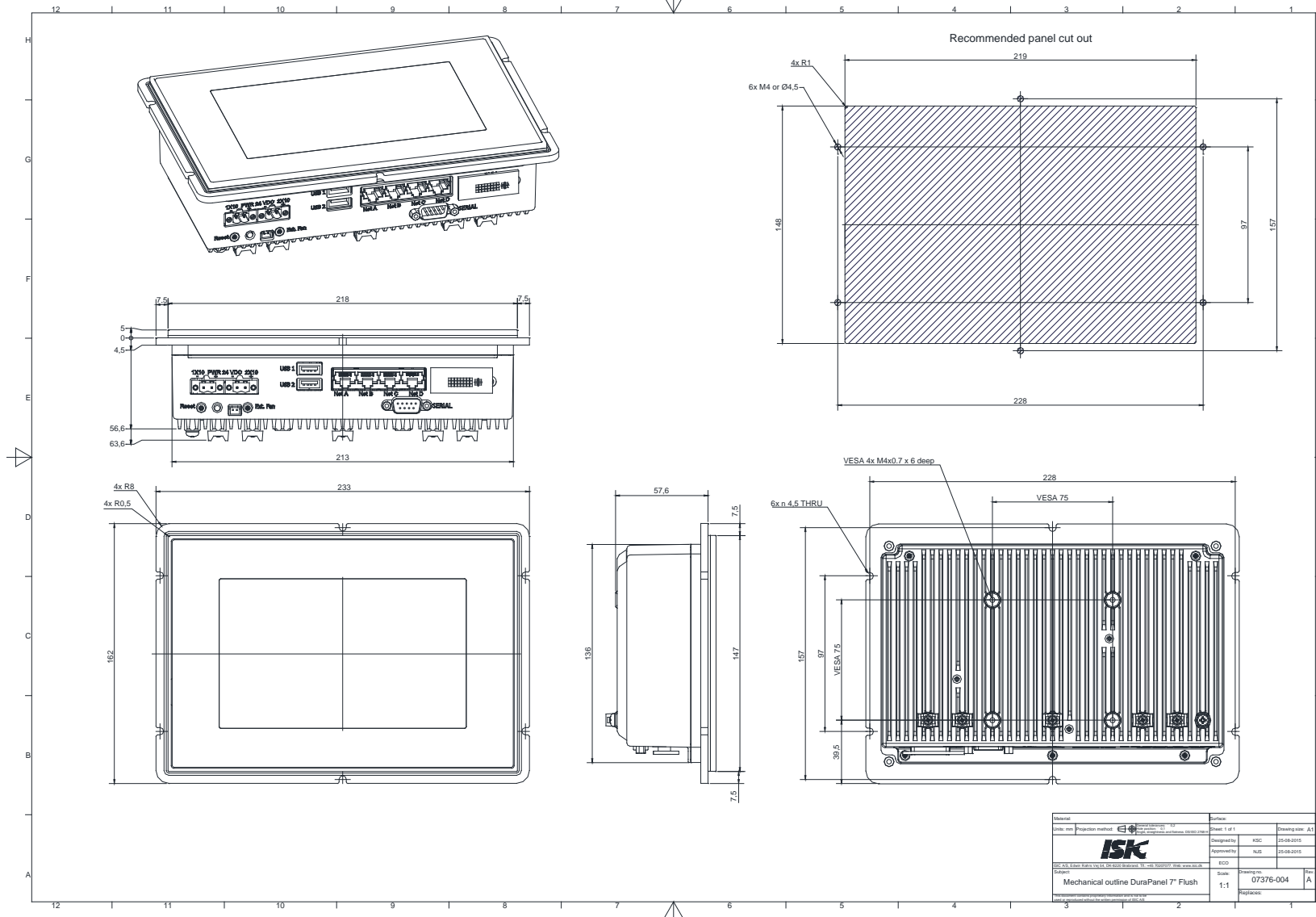
### DuraPANEL - Dimensions

<b>Size:</b>	396 mm (W) x 256 mm (H) x 63.5 mm (Depth behind bezel) – Drop-in retrofit 13.3” version
<b>Weight:</b>	App. 4 kg.
<b>Optional Bracket:</b>	Desk/ceiling-and wall-bracket (VESA 75x75mm)

# 7 Mechanical outline DuraPanel 7 – Drop in



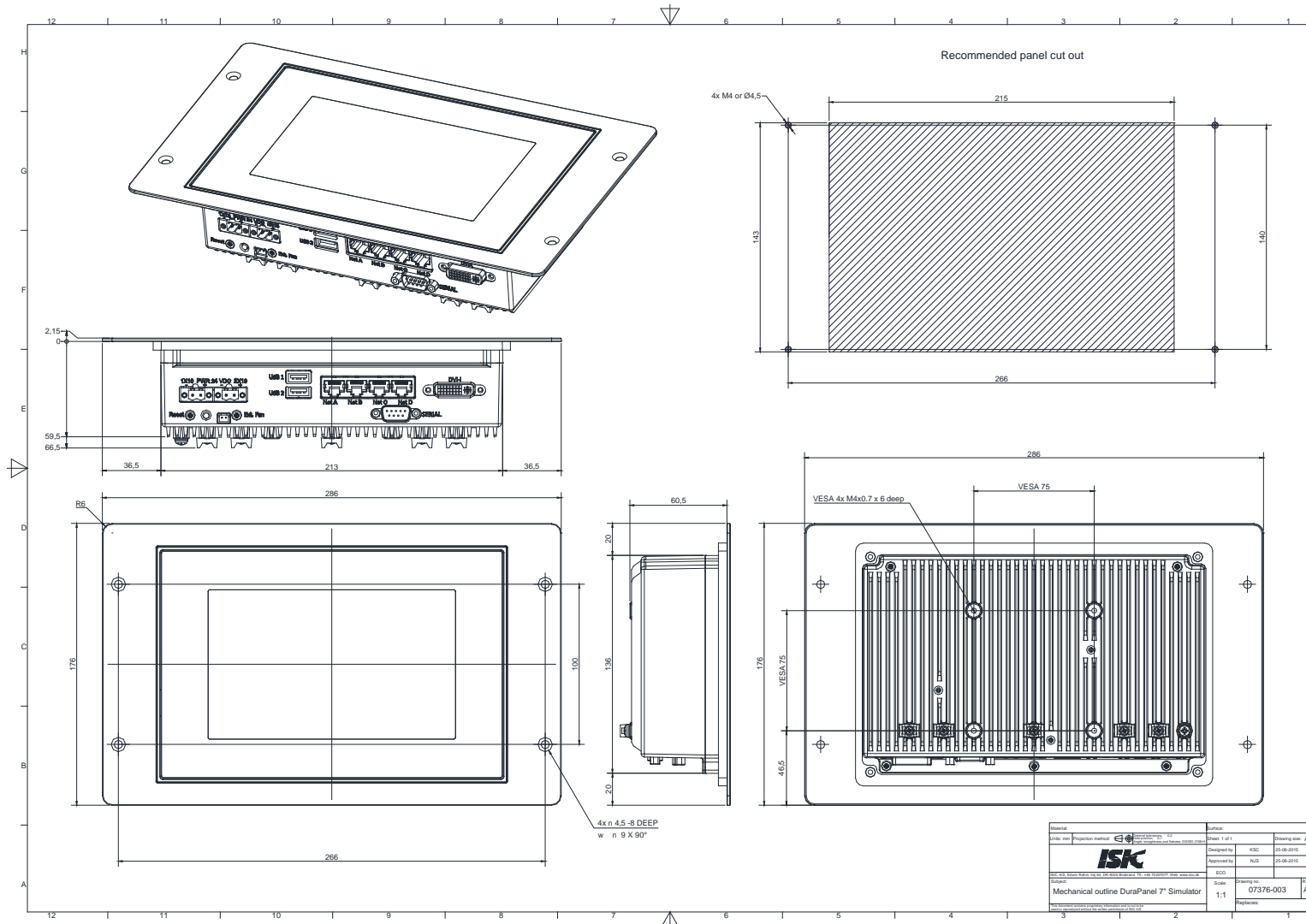
## 8 Mechanical outline DuraPanel 7 – Flush mount



Material:	Surface:	Sheet: 1 of 1	Drawing size: A1
Unit: mm	Projection method:	Designed by: KSC	25-08-2015
		Approved by: NLS	25-08-2015
		ECO:	
Mechanical outline DuraPanel 7 <sup>®</sup> Flush		Scale: 1:1	Replaces: 07376-004

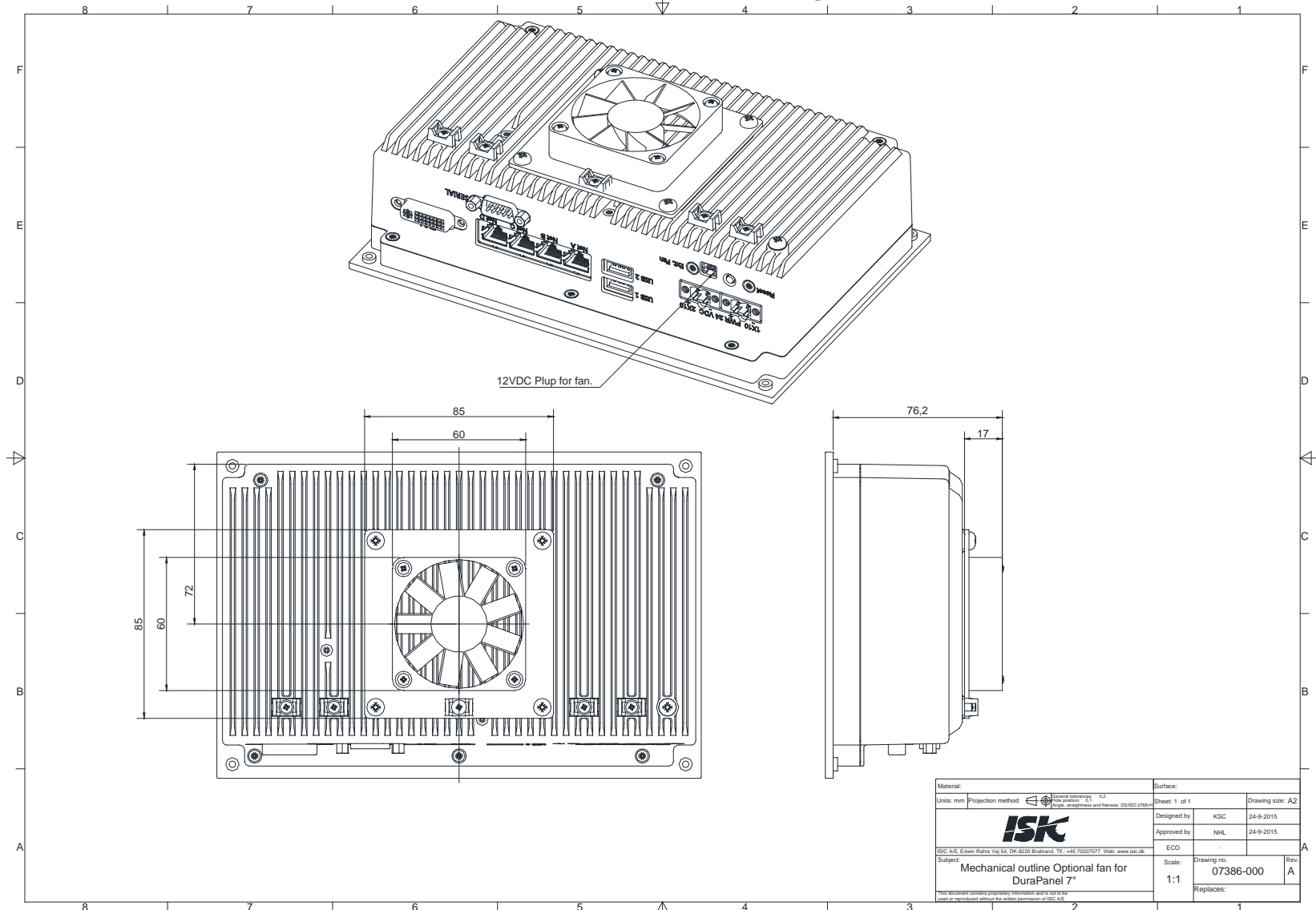


# 10 Mechanical outline DuraPanel 7 – Simulation



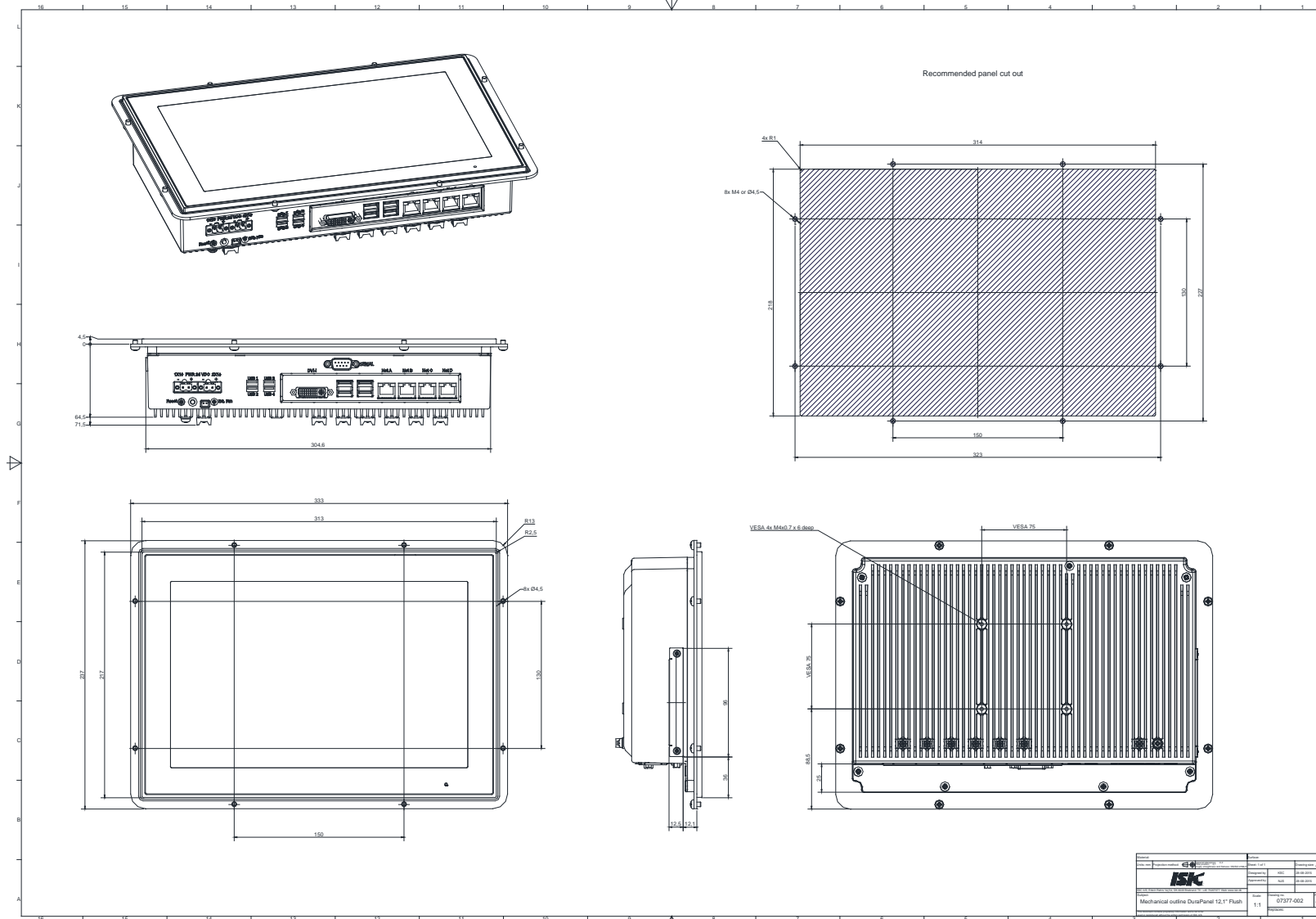
Reference	Surface	Sheet 1 of 1	Drawing size: A1
Units: mm	Projection method: 1st	Prepared by: ASK	20-08-2015
		Approved by: ASK	20-08-2015
		ECO	
Mechanical outline DuraPanel 7 Simulator		Scale: 1:1	Drawing no: 07376-003
			Page: A

# 11 Mechanical outline DuraPanel 7 – Optional fan



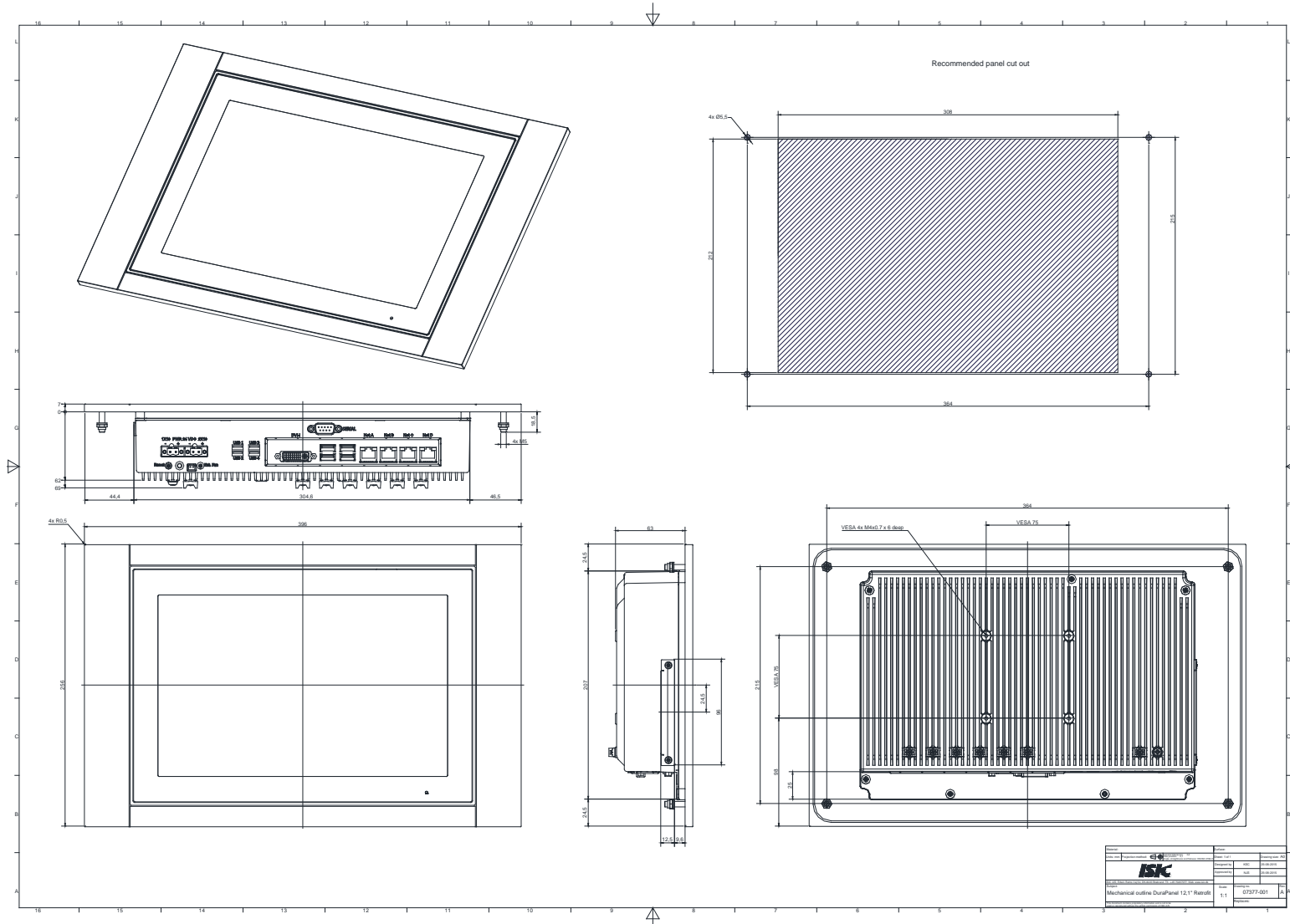
Material:	Surface:
Units: mm Projection method:  General tolerances: 0.2 Hole position: 0.1 Hole length and diameter: 0.15	Sheet: 1 of 1 Drawing size: A2
 ISK A/S, Edvin Rahn Vej 64, DK-8220 Brøndby, TE: +45 70207077, Web: www.isk.dk Subject:	Designed by: KSC 24-9-2015
	Approved by: NHL 24-9-2015
Scale: 1:1	Drawing no.: 07386-000
	Replaces:
	Rev: A

# 12 Mechanical outline DuraPanel 12 inch - Flush



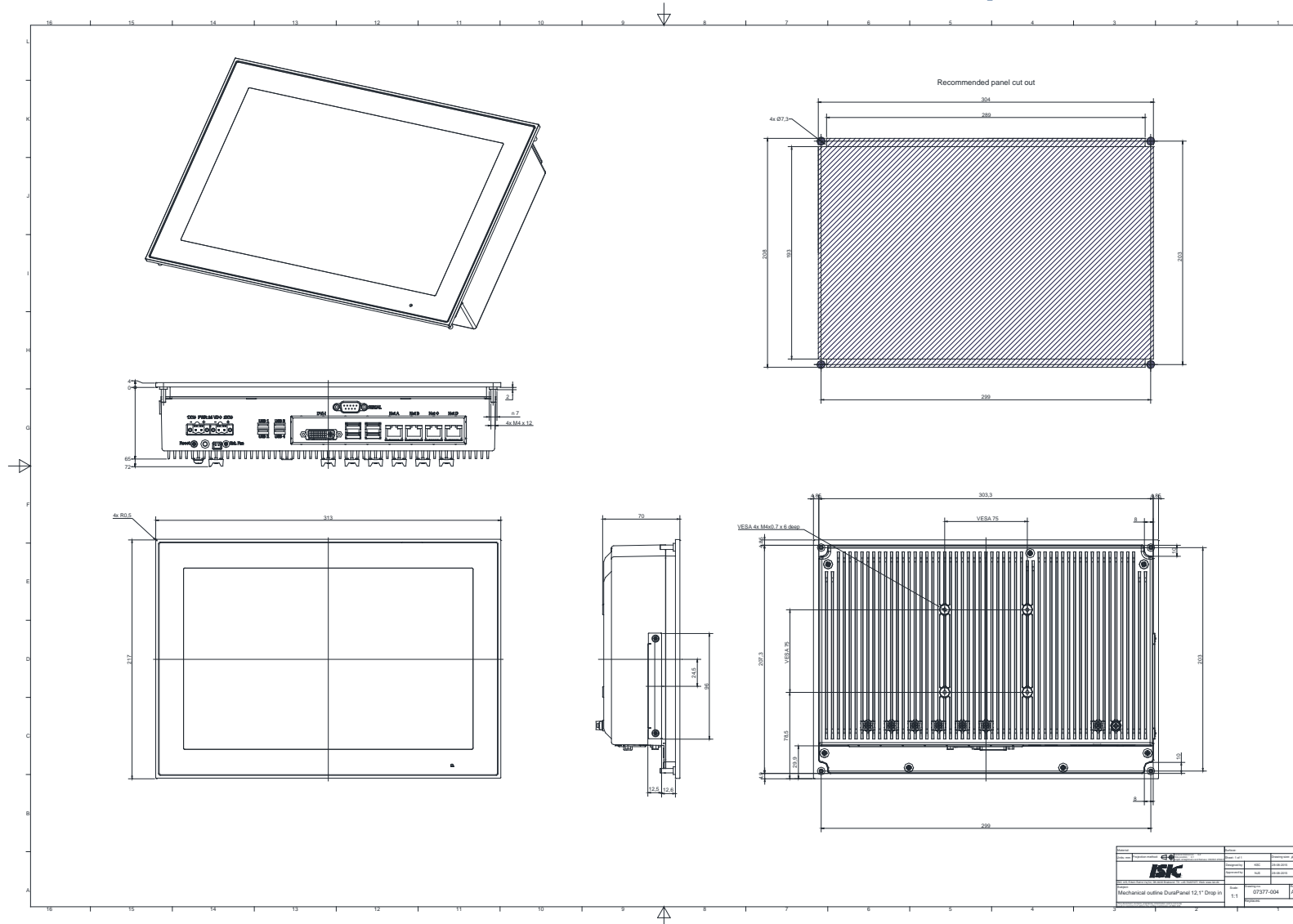
Rev	Desc	Auth	Date
1.1	Mechanical outline DuraPanel 12.1" Flush	07377-002	1.1

# 13 Mechanical outline DuraPanel 12 inch - Retrofit





# 14 Mechanical outline DuraPanel 12 inch – Drop In



# 15 Dura Communication protocol

## 15.1 Message Format

The interface board supports a data rate of 19200 bits per second. Data shall be transmitted with no parity, one start bit, and one stop bit. The basic message format is shown below:



The minimum message length is 7 bytes.

### 15.1.1 Attention (ATTN)

This byte identifies the start of a message. The following three values are defined:

ATTN	Description
0x07	Command
0x06	Acknowledge
0x15	Negative Acknowledge

A remote master initiates a command using the 0x07 attention code. The interface board will reply with an acknowledge (ACK) code if the command was received successfully, or a negative acknowledge (NACK) if the command contained errors.

Note that the interface board will acknowledge messages, even if it fails to execute the actions contained within. NACKs are only issued when the message format is corrupted, e.g. invalid checksums.

### 15.1.2 Address (ADDR)

This byte is used to identify and address individual interface boards. In a multi-slave configuration, the master can target each interface board individually, in which case the addressed interface board will reply with either an ACK or a NACK.

The remote master can address all interface boards simultaneously using the broadcast address. In this case the interface boards will not reply.

ADDR	Description
0x00:0xFE	Individual address space
0xFF	Broadcast address

## 15.2 Command (CMD)

The following commands are defined for the interface board:

CMD	Description
MAN	Manufacturer ID
BZZ	Buzzer Control Command
FAN	Fan Control Command
ETC	Elapsed Time Counter
TMP	Temperature Sensor
LIS	Light Sensor

### 15.2.1 Data Length (LEN)

This byte contains the length of the DATA field. The minimum value is 0 bytes. No messages have been defined with a length of more than 35 bytes.

### 15.2.2 Inverse Header Checksum (IHCHK)

This is a simple 8 bit checksum. The checksum byte is initialized to 0. A bit-wise inversion of bytes 0 to 5 is performed. The 8 bit sum (without carry) of inverted bytes 0 to 5 and byte 6 shall be 0xFF.

If a message fails the checksum, the interface board will reply with a NACK message with zero data. This requirement does not apply to broadcasted messages.

### 15.2.3 Data Sent (DS)

The DS field is only transmitted as a mirror of the sent data.

### 15.2.4 Data Field (DATA)

The data field is only transmitted if LEN is greater than 0. The field carries additional data depending of the message command.

### 15.2.5 Inverse Data Checksum (IDCHK)

The inverse data checksum is only transmitted if LEN is greater than zero. The checksum is initialized to 0. A bit-wise inversion of DATA field(s) is performed. The 8 bit sum (without carry) of the inverted bytes and the IDCHK shall be 0xFF.

The interface board will reply with a NACK to all messages with invalid checksums. This requirement does not apply to broadcasted messages.

### 15.2.6 No Operation (NOP)

This is empty data '0x00' and only used as a filler between detection bytes for the reset command.

## 15.3 Message Command

### 15.3.1 Manufacturer ID (MAN)

This command shall be sent to the interface board to request Manufacturer ID Code. No data shall be sent with the command

The interface board will reply to this command with an ACK attention code. The DATA field will be set to an ASCII string with the value “ISIC”.

Example:

Ask for the Manufacturer ID:

ATTN	ADDR	CMD			LEN	IHCHK
0x07	0x00	0x4D	0x41	0x4E	0x00	0x1C

Reply from interface board (“ISIC”):

ATTN	ADDR	CMD			LEN	IHCHK	DATA				IDCHK
0x06	0x00	0x4D	0x41	0x4E	0x04	0x19	0x49	0x53	0x49	0x43	0xD7

### 15.3.2 Monitor Firmware Version (VER)

This command is sent to the monitor to request the Firmware Version of the embedded code. No data shall be sent with the command.

The monitor will reply to this command with an ACK attention code. The DATA field will be set to an ASCII string with the ISIC P/N and revision. Maximum length is 20 characters.

Example:

Ask for the Monitor Firmware Version:

ATTN	ADDR	CMD			LEN	IHCHK
0x07	0x00	0x56	0x45	0x52	0x00	0x0B

Reply from monitor (“07050-000-B”):

ATTN	ADDR	CMD			LEN	IHCHK	DATA					
0x06	0x00	0x56	0x45	0x52	0x0B	0x01	0x30	0x37	0x30	0x35	0x30	0x2D

DATA (cont.)					IDCHK
0x30	0x30	0x30	0x2D	0x42	0xD7

### 15.3.3 Buzzer Control Command (BZZ)

This command will change the state of the buzzer on interface boards with a buzzer integrated.

The value placed in the DATA field selects the state of the buzzer as listed below:

DATA	State
0x00	Turn the buzzer off (DEFAULT)
0xFF	Turn the buzzer on

If the checksum is valid and the command completes successfully, the interface board will reply with an ACK message with the current buzzer state in the DATA field.

If the checksum was invalid, the interface board will reply with an ACK message.

Example:

Turn the buzzer on:

ATTN	ADDR	CMD			LEN	IHCHK	DATA	IDCHK
0x07	0x00	0x42	0x5A	0x5A	0x01	0x01	0xFF	0x00

Reply from Interface board:

ATTN	ADDR	CMD			LEN	IHCHK	DATA	IDCHK
0x06	0x00	0x42	0x5A	0x5A	0x01	0x02	0xFF	0x00

### 15.3.4 Fan Control Command (FAN)

This command will change the state of the fan on monitors with a fan integrated.

The value placed in the DATA field selects the state of the fan as listed below:

DATA	State
0x00	Turn the fan off
0x01	Switches the fan to temperature controlled (DEFAULT)
0xFF	Turn the fan on

If the checksum is valid and the command completes successfully, the monitor will reply with an ACK message with the current fan state in the DATA field.

If the checksum was invalid, the monitor will reply with a NACK message.

Example:

Turn the fan on:

ATTN	ADDR	CMD			LEN	IHCHK	DATA	IDCHK
0x07	0x00	0x46	0x41	0x4E	0x01	0x22	0xFF	0x00

Reply from Monitor:

ATTN	ADDR	CMD			LEN	IHCHK	DATA	IDCHK
0x06	0x00	0x46	0x41	0x4E	0x01	0x23	0xFF	0x00

### 15.3.5 Temperature Sensor (TMP)

Query the interface board for the current temperature. The reply will contain a 1 byte mirror 'DS' and 3 byte ASCII string ranging from -55 to 125 °C.

Example:

Query for current temperature:

ATTN	ADDR	CMD			LEN	IHCHK	DATA	IDCHK
0x07	0x00	0x54	0x4D	0x50	0x01	0x06	0x52	0xAD

Reply from interface board ("025" for 25 °C)

ATTN	ADDR	CMD			LEN	IHCHK	DS	DATA			IDCHK
0x06	0x00	0x54	0x4D	0x50	0x04	0x04	0x52	0x30	0x32	0x35	0x16

### 15.3.6 Light Sensor (LIS)

Query the interface board for the surrounding light. The reply will contain a 5 byte ASCII ranging from 00000 to 65535.

Example:

Query the Light Sensor for the current value:

ATTN	ADDR	CMD			LEN	IHCHK
0x07	0x00	0x4C	0x49	0x53	0x00	0x10

Reply from interface board ("00100"):

ATTN	ADDR	CMD			LEN	IHCHK	DATA					IDCHK
0x06	0x00	0x4C	0x49	0x53	0x05	0x0C	0x30	0x30	0x31	0x30	0x30	0x0E

## 16 Backlight, color ... etc settings

The monitor of DuraPANEL7 & 12 are detected as a Display Port monitor.

DuraPANEL7 & 12 support DDC/CI commands for display settings like brightness, contrast, color luminance, color temperature.

## 17 Compass safe distance

Test object / condition	Minimum Compass safe distance [cm]  (5.4°/H deviation or a horizontal magnetic flux of 0.094μT)	Minimum Compass safe distance [cm]  (18°/H deviation or a horizontal magnetic flux of 0.313μT)
DuraPanel 7	45 cm	30 cm
DuraPanel 12	75 cm	55 cm

## 18 Power Consumption

Test object / condition	P <sub>typ</sub> [W]	P <sub>max</sub> [W]
DuraPanel 7	10W	15W
DuraPanel 12	20W	25W

## 19 In rush current

Test object / condition	[A] @24VDC
DuraPanel 7	~ 85
DuraPanel 12	~ 85

## 20 Troubleshooting

Problem	Cause	Solutions
No picture on display	No power connected	Apply power
Touch has an offset	No grounding of the chassis	Connect ground cable to chassis screw
	No calibration of touch	Calibrate touch

## 21 Servicing the unit

In case that the unit still fails after following the troubleshooting send the unit to ISIC for repair via our RMA service on our web.

## 22 ISIC info / Support

In case you have inquiries or problems with your DuraPanel, you have a number of possibilities to get support.

Company name:	ISIC A/S
Head office:	Edwin Rahrs Vej 54 DK-8220 Brabrand Denmark
Shipping address:	Holmstrupgaardvej 5 DK-8220 Brabrand Denmark
Telephone:	+45 70 20 70 77
Fax:	+45 70 20 79 76
Mail:	mail@isic-systems.com
www:	www.isic-systems.com
VAT number:	DK 16 70 45 39
Bank Name/Address:	Handelsbanken A/S Havneholmen 29 DK-1561 København V Denmark
Bank Code:	0892
SWIFT:	HANDDKKK
IBAN for DKK:	DK53 0892 0001 0159 69
IBAN for EUR:	DK48 0892 0003 0026 19
IBAN for USD:	DK26 0892 0003 0026 27
Contacts:	
RFQ's:	By fax to +45 70 20 79 76 By mail to sales@isic-systems.com
Orders:	By fax to +45 70 20 79 76 By mail to orders@isic-systems.com
Support:	Via homepage <a href="http://www.isic-systems.com">www.isic-systems.com</a> under aftersales By mail to <a href="mailto:service@isic-systems.com">service@isic-systems.com</a> During office-hours (Mo-Fr: CET 0800 - 1600) at +45 70 20 70 77
Service:	Before shipment for service Request Return Material Authorization number at homepage <a href="http://www.isic-systems.com">www.isic-systems.com</a> under RMA By mail to <a href="mailto:service@isic-systems.com">service@isic-systems.com</a>



## 23 Revision history

Rev A	June 2015	First release
Rev B	February 2016	Chapter 1: No cable is supplied with the panel PC's Chapter 3: new DuraPANEL7" drawing in updated and RS232 changed to serial. Chapter 4: RS422/485 information added in, serial table updated with correct pin out. DuraPANEL12 swapped COM1 & COM2. Chapter 15: added DDC/CI information.

## 24 Appendix A: Pixel policy

### ISO 9241-307:2008 guidelines for LCD pixel defects

#### Introduction

TFT displays consist of a set number of pixels. Each pixel consists of 3 sub-pixels also called dots (one red, one blue and one green). Every sub-pixel is addressed by its own transistor. As a result, the manufacturing of glass substrate is very complex.

Due to the nature of this manufacturing process, occasional defects can occur. Pixel defects or failures cannot be fixed or repaired and may occur at any stage during the service life of the TFT display.

To regulate the acceptability of defects and protect the end user, ISIC A/S complies with the ISO 9241-307:2008 standard. This standard recommends how many defects are considered acceptable in a display, before it should be replaced within the terms of the warranty.

#### Monitor classification

##### ISO 9241-307:2008

Allowed defects per type per million pixels						
Defect classes	Pixel defects			Cluster defect		
	Type 1	Type 2	Type 3 total ( $2 \times N_{3a} + N_{3b}$ )	Type 1	Type 2	Type 3
Class: 0	0	0	0	0	0	0
Class: I	1	1	5	0	0	0
Class: II	2	2	10	0	0	1
Class: III	5	15	100	0	0	5

ISIC TFT monitors comply with ISO 9241-307:2008 Class II.

Special agreements about other classifications can be made between ISIC A/S and the customer.

#### Measurement method/monitoring conditions for pixel defects

In compliance with the ISO-9241-307:2008 standard, the following conditions are observed:

- Final check for pixel fault undertaken right after burn-in, i.e. with pre-heating of the display.
- Surrounding temperature  $25^{\circ}\text{C} \pm 5^{\circ}\text{C}$
- Relative air humidity 40–70%

#### Pixel definition

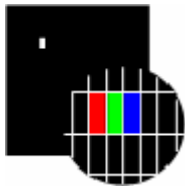
Every pixel consists of three sub-pixels/dots (red, blue, green).

Every sub-pixel has its own transistor.

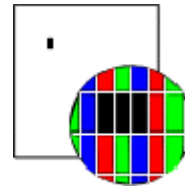
The three sub-pixels/dots must be considered as one unit.



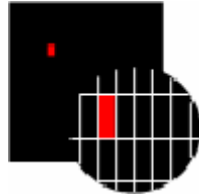
**Pixel**



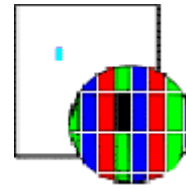
**Pixel defect type 1** Pixel constantly lit



**Pixel defect type 2** Pixel constantly dark



**Pixel defect type 3a**  
Sub-pixel/dot (red, blue, green) constantly lit



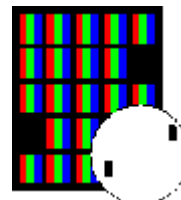
**Pixel defect type 3b**  
Sub-pixel/dot (red, blue, green) constantly dark

**Cluster**

A cluster consists of 5 x 5 pixels.



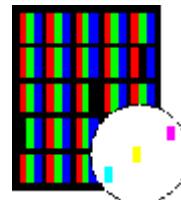
**Cluster pixel defect type 1**  
Pixels in a cluster area constantly lit



**Cluster pixel defect type 2**  
Pixels in a cluster area constantly dark



**Cluster pixel defect type 3a**  
Sub-pixels/dots in a cluster area constantly lit



**Cluster pixel defect type 3b**  
Sub-pixels/dots in a cluster area constantly dark

### Pixel faults accepted by ISIC A/S

The maximum number of pixel faults that is considered acceptable at different screen resolutions is shown in the table below.

This is the native resolution and not the resolution as adjusted by user.

#### Class II

Allowable number of pixel faults in monitor applications							
Screen type	Native resolution	Number of pixels	Pixel defect type 1	Pixel defect type 2	Pixel defect Type 3 total ( $2 \times N_{3a} + N_{3b}$ )	Cluster defect type 1 and 2	Cluster defect type 3
WVGA	800x480	384,000	0	0	3	0	0
XGA	1024x768	768,432	1	1	7	0	0
WXGA	1280x800	1,024,000	2	2	10	0	1
SXGA	1280x1024	1,310,720	2	2	13	0	1
UXGA	1600x1200	1,920,000	3	3	19	0	1
FHD	1920x1080	2,073,600	4	4	20	0	2
WUXGA	1920x1200	2,304,000	4	4	23	0	2

## 25 Appendix B: Certificate of Conformity



### EC DECLARATION OF CONFORMITY

We, manufacturer

**ISIC A/S**

Edwin Rahrs Vej 54, DK-8220 Brabrand, Denmark

hereby certifies that the

**Products:**

Category: Marine Panel Computer

Type: DuraPanel Glass

Models: 7", 12", 24" and 26"

ISIC Part Nos.: 06607-XXX and 06612-XXX  
06624-XXX and 06626-XXX

are designed, manufactured and tested in Denmark, and complies with the requirements in the following directives and standards:

**2004/108/EC EMC Directive**  
**IEC 60945:2002**  
**IACS E10:2006**

Actual inspection/test data are on file and can be subject for examination.

22 June 2015



Edwin Rahrs Vej 54 DK-8220 Brabrand  
TH. +45 7020 7077  
Fax +45 7020 7976



Bo Lander Rasmussen, CEO



Edwin Rahrs Vej 54  
DK-8220 Brabrand  
Denmark

Web: <http://www.isic-systems.com>  
Email: [service@isic-systems.com](mailto:service@isic-systems.com)