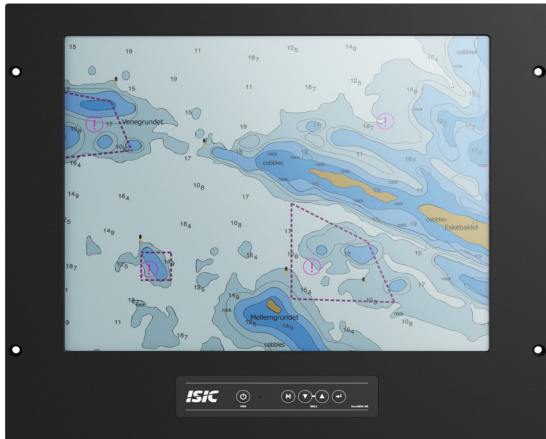


# DuraMON 19" C-Line

Monitor for Radar & ECDIS



DuraMON 19" C-Line monitors are designed for marine, naval and other demanding environments where reliable and durable hardware is required. Applicable for CAT 2 Radar.

The C-Line product family has a long track record in the market and features integrated membrane keys for dimming and is mountable from the front.

- ✓ 60945 Type Approval
- ✓ ECDIS Applications
- ✓ Radar Applications

## Mechanical outline

DuraMON 19" C-Line

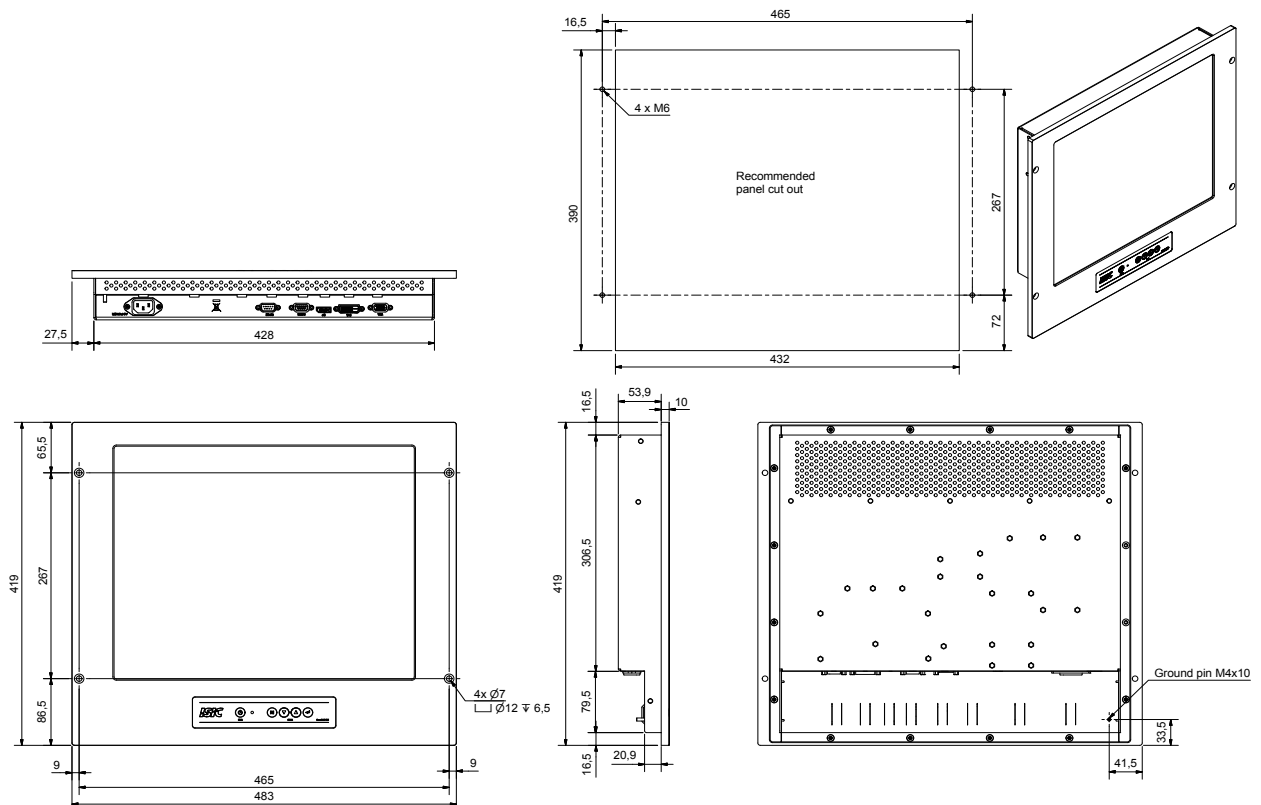


Table and wall brackets - PN 05869-001 & 05876-001

# Specifications DuraMON 19" C-Line

## Display properties

|                   |                                    |
|-------------------|------------------------------------|
| Size              | 19.0"                              |
| Aspect ratio      | 5:4                                |
| Active area       | 376.0 x 301.0 mm                   |
| Luminance         | 300 Cd/m2                          |
| Contrast          | 2000:1                             |
| Native resolution | 1280x1024                          |
| View angle        | 89° (L/R/T/B) typical              |
| Glass             | Anti reflection coated front glass |

## Input/output terminals

|                   |                                      |
|-------------------|--------------------------------------|
| VGA video input   | 1 x 15p D-sub female                 |
| DVI-D video input | 1 x DVI-D Dual link connector female |
| DP video input    | 1 x DP 1.2 connector female          |
| Serial RS232      | 1 x 9p D-sub female - remote control |
| Serial RS422/485  | 1 x 9p D-sub female , optional       |

## Operator interface front panel

|       |  |
|-------|--|
| Power | Power on/off (press for 10 sec. to turn off) |
| Menu  | Get OSD menu                                 |
| Up    | Navigate menu / adjust backlight up          |
| Down  | Navigate menu / adjust backlight down        |
| Enter | Navigate menu / enter set value              |

## Power supply / power consumption

|                  |                                      |
|------------------|--------------------------------------|
| AC power         | 90 - 264 VAC 50 - 60Hz               |
| DC power         | 18 - 36 VDC, optional                |
| AC/DC dual power | 90 - 264 VAC & 18 - 36 VDC, optional |
| Typ. Consumption | 35 W                                 |
| Max. Consumption | 45 W                                 |

## Physical dimensions

|                   |                                |
|-------------------|--------------------------------|
| Dimensions        | 483 (W) x 419 (H) x 64 (D) mm  |
| Dimensions in box | 550 (W) x 490 (H) x 190 (D) mm |
| Weight            | 6.5 kg                         |
| Weight in box     | 9 kg                           |

## Environmental

|                   |                                  |
|-------------------|----------------------------------|
| Operating temp.   | - 15 to 55° C                    |
| Storage temp.     | - 25 to 70° C                    |
| Humidity          | 8 to 95% relative humidity       |
| Protection        | IP65 from front - IP20 from rear |
| Materials encl.   | Seawater resistant aluminum      |
| Surface treatment | Black Powder coating RAL 9005    |

## Options & accessories

|               |   |
|---------------|---|
| Touch         | Not available                             |
| ECDIS         | Colour calibration for ECDIS applications |
| RS 422/485    | Optional extra COM port                   |
| Audio Buzzer  | 75 -85 dB(A) 1m                           |
| Wall bracket  | Wall mount bracket (05876-001)            |
| Table bracket | Table/ceiling mount bracket (05869-001)   |

## Approvals & Certificates

|                  |                                   |
|------------------|-----------------------------------|
| CE mark          | EN 61000-6-2 & EN 61000-6-4       |
| Marine           | IACS E10 rev. 8 & IEC 60945 ed. 4 |
| ECDIS            | IEC 61174 ed. 4                   |
| Radar Navigation | IEC 62388 ed. 2 & IEC 62288 ed. 2 |
| Certificate      | DNV Mutual Recognition            |
| Compass SD       | 65 cm (stand.) 35 cm (steer.)     |