



PASSION FOR QUALITY

**NX series
RFID safety switches
with lock**



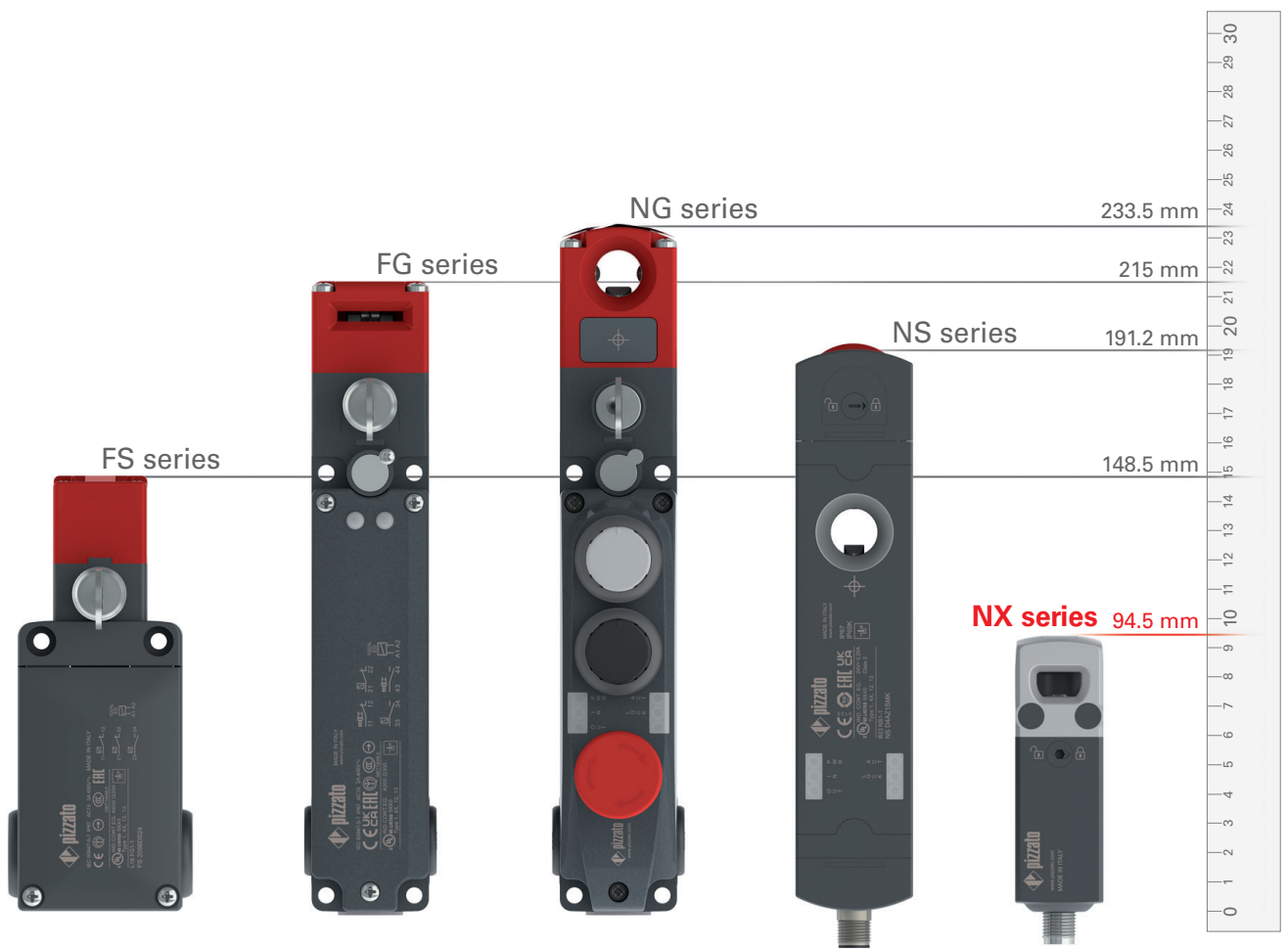
Passion for Quality

DESCRIPTION

New NX series RFID safety switches with lock

**Maximum technology in the minimum volume:
The smallest RFID safety switch with lock in the world**

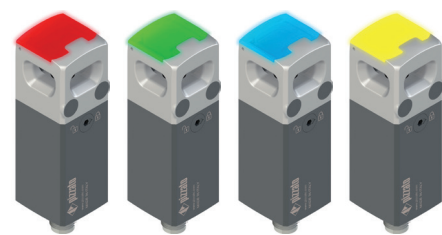
The RFID safety switches of the NX series with lock are the most compact on the market (30x30x94.5 mm), making them the perfect solution for use in the smallest of spaces. The latest technology, the proven experience in the area of safety switches and a new design approach have led to the development of a switch with the highest safety levels PL e and SIL 3, RFID technology, three actuator inputs and uniform mounting, an actuator with articulated joint which can be mounted in different positions, a robust metal head, a lightweight and flexible technopolymer housing and a cover that can be illuminated in different colors for indicating the operating state.



FS SERIES	FG SERIES	NG SERIES	NS SERIES	NX SERIES
1996	2005	2014	2016	2023
Height 148.5 mm	Height 215 mm	Height 233.5 mm	Height 191.2 mm	Height 94.5 mm
Safety switch with lock	Safety switch with lock	RFID safety switch with lock	RFID safety switch with lock	RFID safety switch with lock
Technopolymer housing	Metal housing	Metal housing	Technopolymer housing	Metal head Technopolymer housing



COVER WITH MULTICOLOUR SIGNALLING

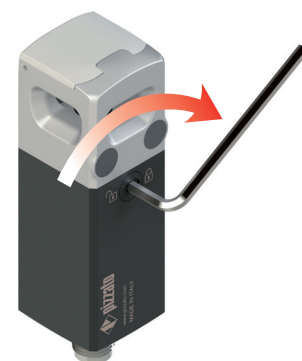


The switches of the NX series are the only switches in their market segment equipped with an illuminated RGB-LED cover that enables the fast and immediate diagnosis of the function states of the inputs and outputs. As a result, this display can also easily be read from a distance and from all viewing angles.

BISTABLE OPERATING PRINCIPLE

The safety switches of the NX series are designed as bistable switches. The internal solenoid (with which the device is locked or unlocked) operates in the bistable mode, i.e., the solenoid is activated by short electrical impulses that stably move it to the locked or unlocked position. This design has numerous advantages, including a significant reduction in energy consumption and the warming of the device.

AUXILIARY RELEASE



The switch is equipped with an auxiliary release that can be actuated with an Allen key.

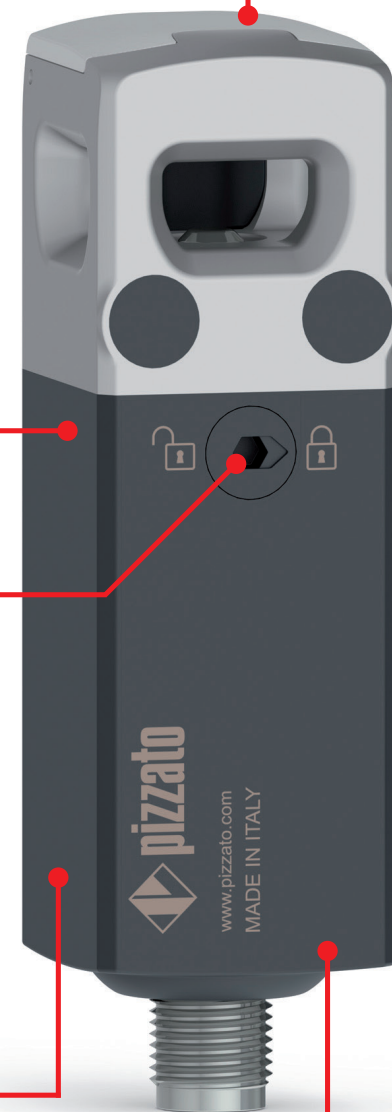
MAXIMUM SAFETY WITH A SINGLE DEVICE

PL e + SIL 3 The NX series switches are constructed with redundant electronics. As a result, the maximum PL e and SIL 3 safety levels can still be achieved through the use of a single device on a guard.

METAL HEAD AND TECHNOPOLYMER BODY

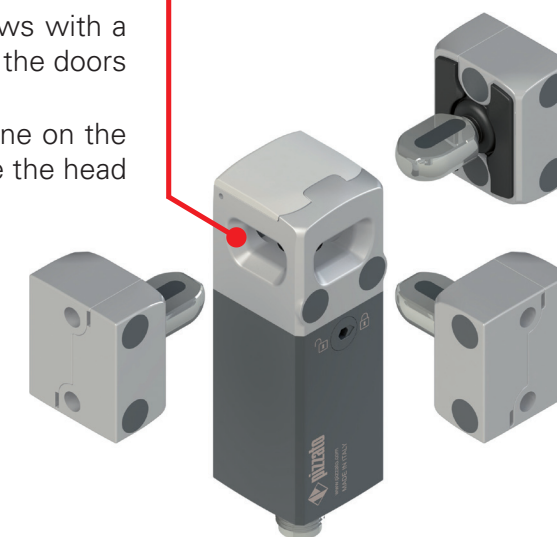
The housing of NX series switches is made of two materials:

- The metal head ensures maximum resistance to impacts from the actuator and resistance to pulling when the door is locked;
- The technopolymer body ensures a low weight and provides flexibility in the design.



UNIFORM MOUNTING

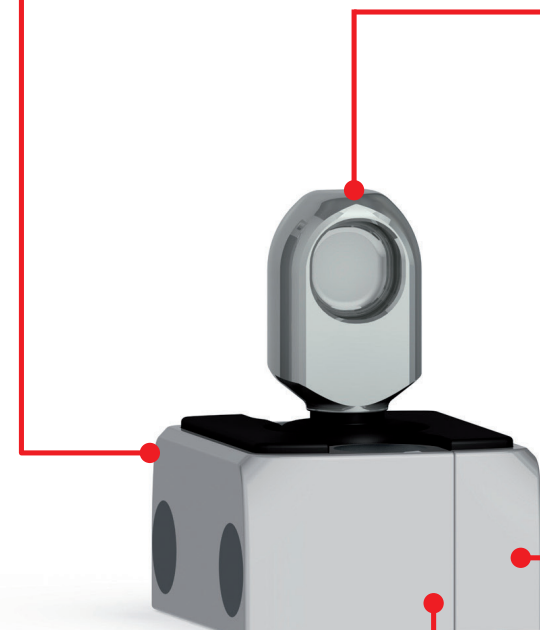
The switch is always mounted using the two front M5 screws with a hole spacing of 20 mm, whereby it does not matter whether the doors open to the right or left or if they are sliding or hinged doors. This is made possible by the three inputs for the actuator: one on the front and two on the sides. This eliminates the need to rotate the head or switch.



RFID TECHNOLOGY WITH HIGH CODING LEVEL

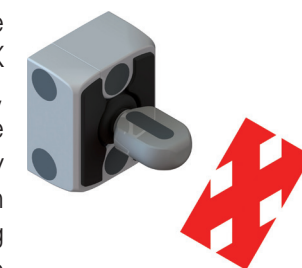


The NX series is provided with an electronic system based on RFID technology to detect the actuator. This allows to provide each actuator with different coding and makes it impossible to tamper with a device by using another actuator of the same series.

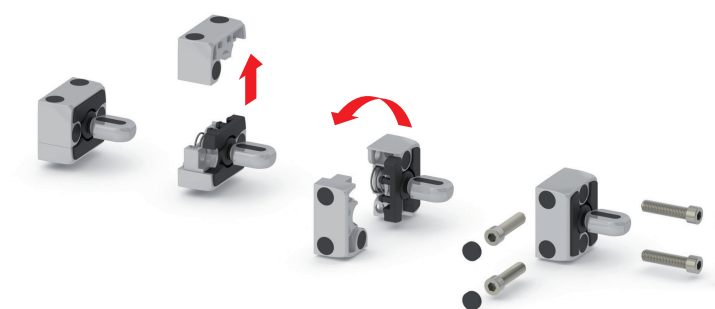


JOINTED ACTUATOR FOR INACCURATELY CLOSING GUARDS

The actuator for the switches of the NX series is articulated, thereby allowing the actuator pin to be safely guided into the switch through the centring hole. As a result, the actuator and switch do not need to be precisely aligned during installation.



ROTATABLE ACTUATOR



ACTUATOR MADE OF METAL

The actuator is made of metal to ensure maximum protection against impacts and resistance to tension.

All actuators of the NX series are equipped with fastening holes for M5 screws with a hole spacing of 25 mm on both the front and the sides. Moreover, the two half shells that make up the actuator housing can be opened and the pin turned so that the working plane of the actuator can be rotated by 90°.



APPLICATION EXAMPLES



Hinged door



Sliding door



pizzato

PASSION FOR QUALITY



**DOWNLOAD
BROCHURE**

Pizzato Elettrica s.r.l.

via Torino, 1 - 36063 Marostica (VI) Italy

Phone: +39 0424 470 930

E-mail: info@pizzato.com

Website: www.pizzato.com

Any information or application example, connection diagrams included, described in this document are to be intended as purely descriptive. The choice and application of the products in conformity with the standards, in order to avoid damage to persons or goods, is the user's responsibility. The drawings and data contained in this document are not binding and we reserve the right, in order to improve the quality of our products, to modify them at any time without prior notice. All rights to the contents of this publication are reserved in accordance with current legislation on the protection of intellectual property. The reproduction, publication, distribution and modification, total or partial, of all or part of the original material contained therein (including, but not limited to, texts, images, graphics), whether on paper or in electronic form, are expressly prohibited without written permission from Pizzato Elettrica Srl. All rights reserved. © 2023 Copyright Pizzato Elettrica.

ZE BRC25A23-ENG



8 018851 619496