

IN-SIGHT ViDi READ TOOL

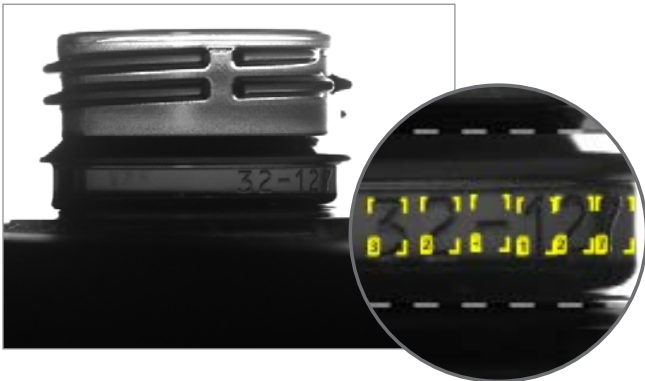
Deep learning-based solution for text and character reading

In-Sight® ViDi™ is a powerful deep learning software platform designed specifically for factory automation. Combining artificial intelligence (AI) with the power of In-Sight, In-Sight ViDi solves applications that are too difficult, complex, or expensive for traditional machine vision systems.

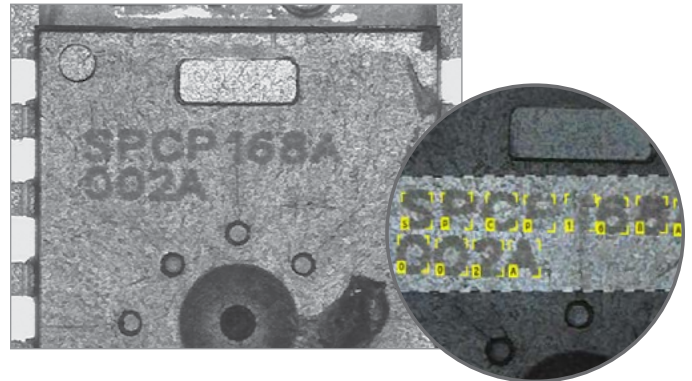
The In-Sight ViDi Read tool deciphers badly deformed, skewed, and poorly etched codes using optical character recognition (OCR). In-Sight ViDi Read works right out of the box, dramatically reducing development time, thanks to the deep-learning pretrained font library. For codes where additional training is required, the ViDi interface guides the user through creating robust and reliable OCR results.

The easy-to-use interface eliminates complex programming. Simply define the region of interest, set the character size, and label the characters in the image set. In just a few steps, without vision expertise, this robust tool can be retrained to read application-specific characters that traditional OCR tools are not able to decode. Plus, the visual debug feature identifies mis-reads that can be easily corrected.

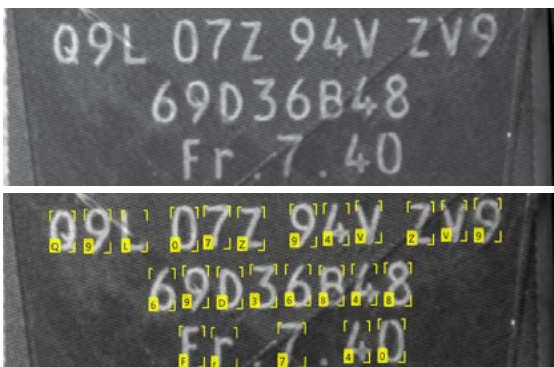
Reads embossed characters on injection molded product



Deciphers laser-etched codes on electronic components



Reads label-based codes on packaging



Verifies characters printed on reflective materials



In-Sight D900 Vision System

The In-Sight ViDi Read tool can be deployed on the In-Sight D900 vision system that is optimized to run deep learning applications without the need for a PC. This embedded solution helps factory automation customers easily solve challenging OCR, assembly verification, and defect detection projects that are often too difficult to program with traditional, rule-based machine vision tools. This deep learning solution also delivers reliable, fast, and consistent results not possible with human inspection.

Powerful, modular smart camera

The In-Sight D900 is a highly-modular, IP67-rated vision system that includes field-changeable lighting, lenses, filters, and covers that can be customized to your exact application requirements. It also includes an embedded deep learning inference engine to solve complex applications at production line speeds.

In-Sight spreadsheet guides application development


Deep learning applications are now accessible to non-programmers thanks to the intuitive In-Sight spreadsheet that simplifies application development and streamlines factory integration. It also provides easy access to machine vision and deep learning tools, combining the power of both traditional vision algorithms and artificial intelligence.



In-Sight ViDi


- Graphical User Interface
- Easy to Use
- All in One Solution

TRAIN



In-Sight ViDi
Training License

DEPLOY



In-Sight D900
Vision System

COGNEX

Companies around the world rely on Cognex vision and barcode reading solutions to optimize quality, drive down costs and control traceability.

Corporate Headquarters One Vision Drive Natick, MA 01760 USA | For Regional Sales Offices, visit www.cognex.com/sales

www.cognex.com

© Copyright 2020, Cognex Corporation. All information in this document is subject to change without notice. All Rights Reserved. Cognex and In-Sight are registered trademarks of Cognex Corporation. ViDi is a trademark of Cognex Corporation. All other trademarks are property of their respective owners. Lit. No. ISViDi-Read-DS-04-2020