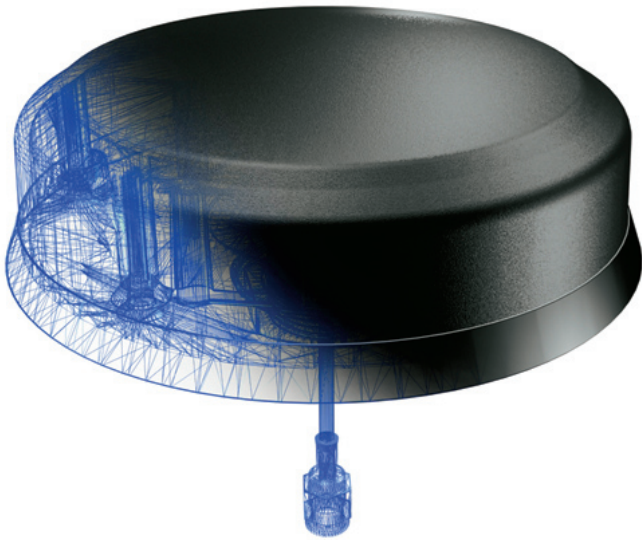


# SmartDisc™



## SmartDisc – the versatile antenna covering your needs

The SmartDisc antenna, a low profile mobile phone antenna designed to meet the industrial demands on high RF performance with multi installation capabilities. It's durable design and low profile makes it ideal to use where a discreet and reliable installation is preferred.

The SmartDisc antenna is a ground plane independent antenna enabling a wide range of installations on different materials, perfect for M2M applications.

- **Excellent RF-performance**
- **790/868/900/1800/1900/2100/2600**
- **Low profile and durable design**
- **Ground plane independent**
- **Multiple installation principles, hole and adhesive mount**
- **Ideal for M2M applications such as vending machines, power meters, forest machines and rugged vehicle installations.**
- **Based upon Smarteq Wireless patented RF technology**
- **All versions RoHS compliant**

**SMARTEQ™**  
■■■■■ antennas

[www.smarteq.com](http://www.smarteq.com)

# Specifications

## Electrical

Frequency	Low Band: 790-960/High Band: 1710–2690MHz
Impedance	Nominal 50 ohm
Polarization	Linear vertical
VSWR	Low Band 3:1 High Band 3:1
Gain	1dBd (3,15 dBi)
Max power	10 W

## Mechanical

Dimension	Circular 90 mm x Height 26 mm
Weight	190 g
Cable	2.5 or 0.5 meter RG 316 (not on all versions)
Connector	SMA (m)
Material	PC/PBT/Aluminum alloy
Color	Black or white
Water ingress	According to IP67 when installed

## Environmental

Temperature	Operation -40°C to +85°C
-------------	--------------------------

## Other

DC-short antenna	
Available versions	Hole mount Adhesive mount



Product No	Product	Color	Mount	Cable, m	Connector
707115	SmartDisc	Black	Screw	0,5	SMA(m)
707125	SmartDisc	White	Screw	0,5	SMA(m)
707122	SmartDisc	Black	Tape	0,5	SMA(m)
707126	SmartDisc	White	Tape	0,5	SMA(m)
707128	SmartDisc	Black	Screw	2,5	SMA(m)
707129	SmartDisc	White	Screw	2,5	SMA(m)
707130	SmartDisc	Black	Tape	2,5	SMA(m)
707127	SmartDisc	White	Tape	2,5	SMA(m)
707165	SmartDisc	Black	Screw	5,0	SMA(m)
707123	SmartDisc	Black	Screw	2,5	FME(f)

## Accessories

707154	White bracket to SmartDisc, angled
201411	Bracket SmartDisc, vertical



Smarteq reserves the right to change specifications without prior notice.



**Smarteq Wireless AB**

Sweden

[www.smarteq.com](http://www.smarteq.com)



Smarteq is certified according to  
ISO/TS 16949, ISO 14001

550 028 G

Smarteq develops and supplies high-quality antennas and antenna systems for the wireless transfer of speech and data, communication to and from vehicles and machine to machine. Our staff is fully focused on developing high-performance antennas that will continue to set new standards of excellence that will exceed our customers' expectations.