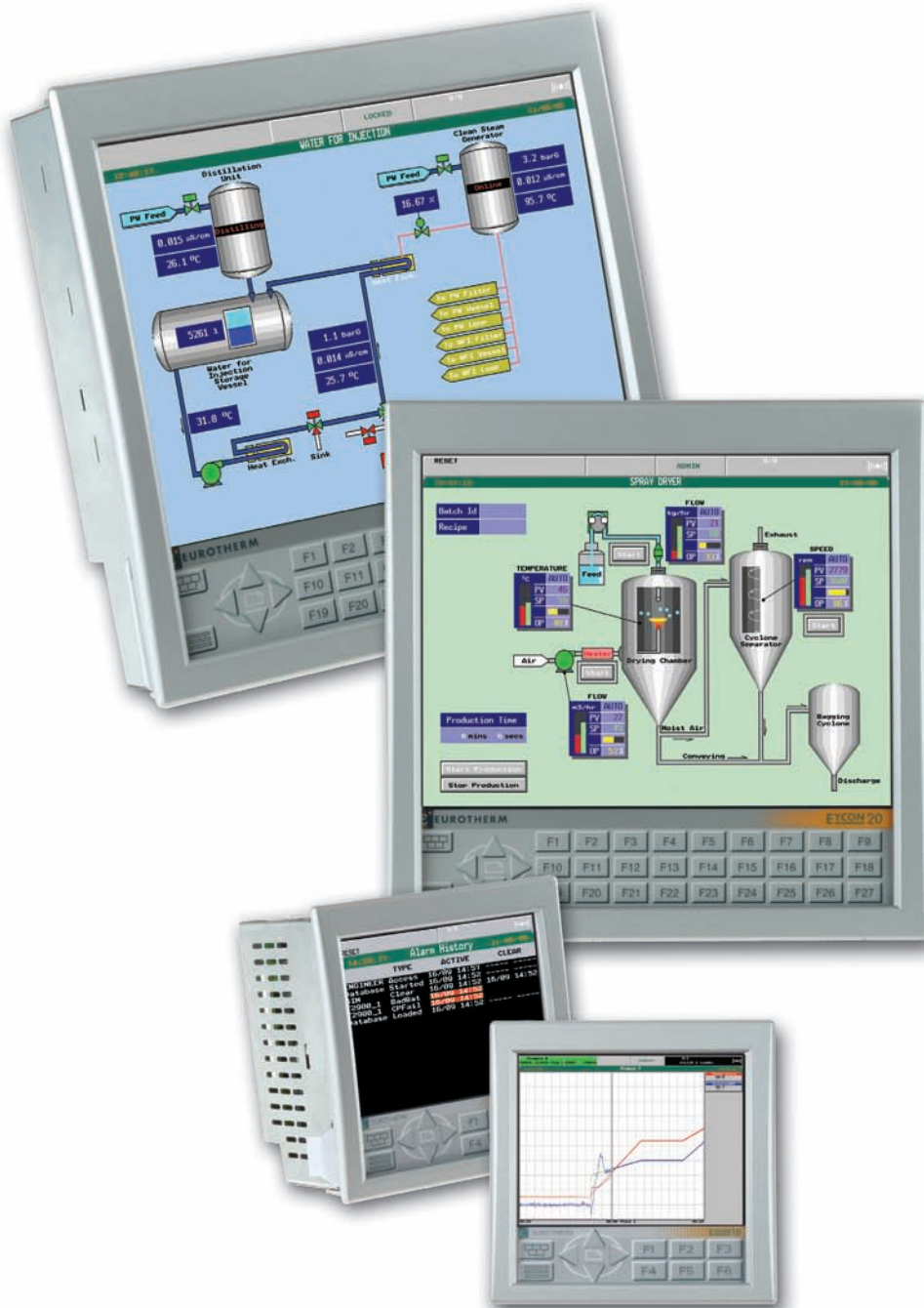


EUROTHERM® FLEXIBLE SOLUTIONS

Eycon™ Series

VISUAL SUPERVISORS



CREATIVE VISUALISATION SOLUTIONS
THAT PUT YOU IN CONTROL

Power and efficiency combined

The Eycon™ Series of visual supervisors provide innovative, multi-function control, recording and visualisation – bringing Eurotherm’s expertise in control, data acquisition and process automation into a single process management unit.

RECORD CONTROL VISUALISE AUTOMATE

Process Management

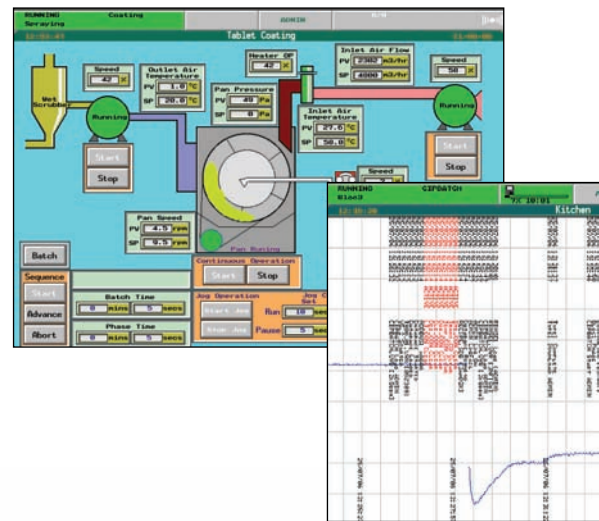
Eycon visual supervisor technology incorporates extensive functionality to provide complete management of a process. Their advanced array of features effectively makes the Eycon visual supervisor a mini DCS – with the efficiency and economy of integration into a single unit and the flexibility to be a powerful component of a wider system.



- batch control
- continuous and sequential control
- recipe management
- setpoint programming
- alarm/event management
- audit trail
- secure logins
- master comms
- data logging
- printer support

Eycon visual supervisor instruments utilised as a building block within a larger system provide peer-to-peer communications over Ethernet (ELIN) - reducing engineering costs with increased availability of the system. They are designed to reduce configuration, integration, installation and wiring costs while improving efficiency and quality with their accurate control.

The versatility of the Eycon visual supervisor units makes them ideal for a wide range of applications – as diverse as pharmaceutical / chemical reactors, glass furnaces, multi-zone heat treatment furnaces, injection moulding and extrusion systems, batch control systems, environment monitoring, building management systems and many more.



ACCURATE CONTROL
improve efficiency and quality

21CFR PART 11
electronic records and electronic signatures

EASY TO USE
custom displays to match your operation

MINI DCS
complete process management

Easy to use, economical solutions

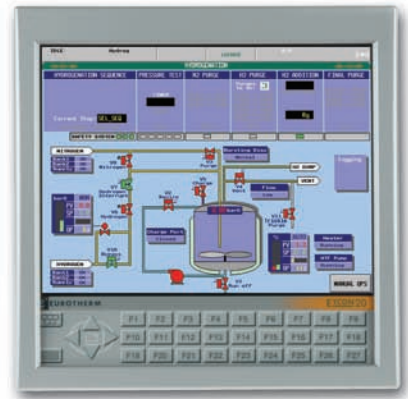
The Eycon-10 and Eycon-20 visual supervisors both incorporate an integrated, full colour, operator display utilising touch screen technology. A simple to use 'pop-up' navigation menu provides the user with an intuitive interface to a wide range of functionality – such as Batch Control, Recipe Management, Commissioning and Diagnostics tools and communications parameters.



Eycon-10

5.5" 1/4 VGA TFT touch screen display

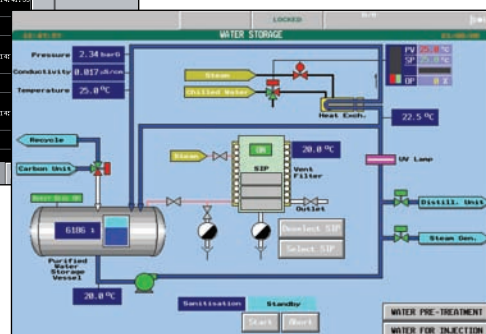
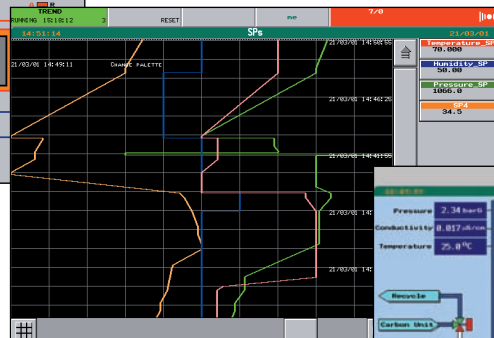
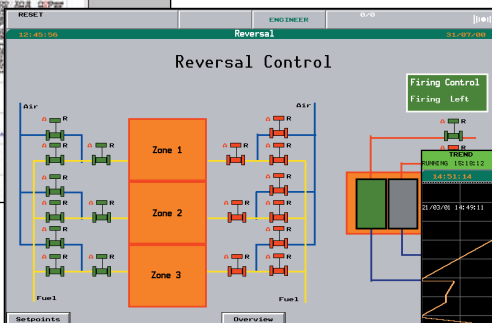
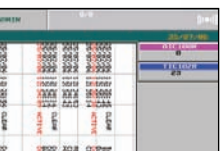
Standard displays
99 user-defined displays
IP65 front of panel enclosure displays
User programmable keys



Eycon-20

12.1" XGA touch screen display

VISUALISE



A Complete Solution

The Eycon Series of visual supervisors is ideal as both a stand-alone solution and is easily integrated into a larger system. EurothermSuite software provides a single environment for visualisation, engineering and configuration across a plant wide solution incorporating multiple strategy engines and I/O solutions. Eycon visual supervisors fit perfectly with this solution as their control network provides peer-to-peer LIN communications with EurothermSuite and other control nodes. Communication with any Modbus device is also provided via serial or Ethernet connection.

Record

Eycon visual supervisors and EurothermSuite also provide continuous, built-in data logging and trending capabilities. Online and historical trends can be viewed locally at the Eycon display or at any EurothermSuite operator station. Logged files can be archived to a removable USB memory stick or to servers on the network using File Transfer Protocol (FTP).

Control and Automate

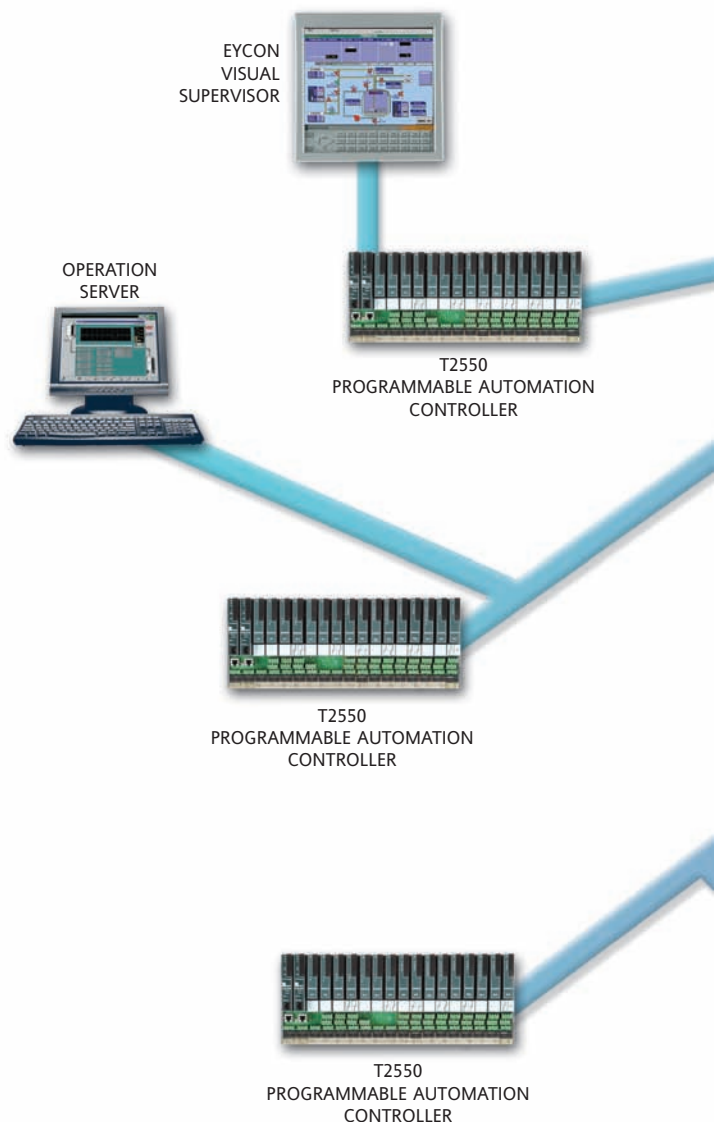
Versatile continuous control capability provides accurate, multiple PID loops and advanced process automation strategies. Eycon visual supervisor's sequential capability provides powerful sequential control and enables implementation of phases as defined by the ISA-S88 process model for the batch processes.

The Setpoint Programmer enables the operator to select and run a required Setpoint Program from a list. With the Preview facility, the operator can view the Program before running it.

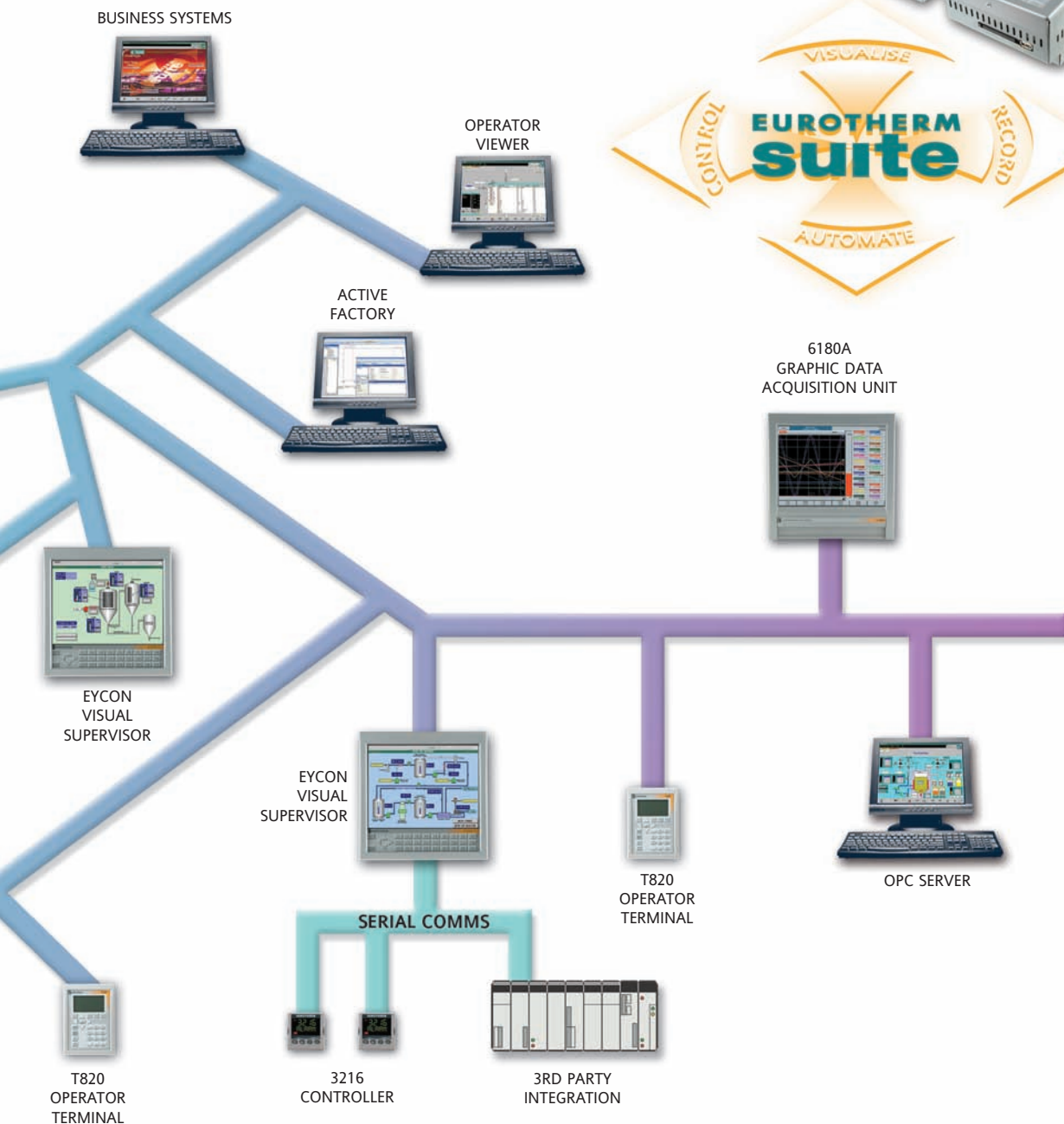
Up to 8 Profiled channels including 128 Digital events with up to 32 segments per Program are supported.



Trending
RECORD
User defined display
VISUALISE
Touch screen
AU
Multiple



Data logging
CONTROL
 Multiple PID loops
TOMATE DCS
 Setpoints



Eycon Series

Eycon visual supervisor instruments can be used either as a stand-alone system or as a building block within a larger system



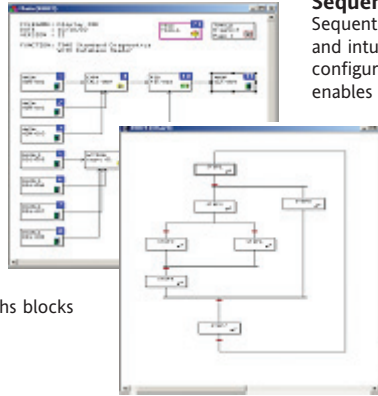
CONTROL ENVIRONMENT

The Eycon Series of visual supervisors are capable of both continuous and sequential control. Their open network architecture allows connection to the Process Interface (T2550) I/O modules and other third party devices. Separating the processing from the I/O allows physical distribution of the modules which saves on wiring costs and panel/cubicle space).

Continuous Control

The continuous control strategy is built by interconnecting function blocks selected from an extensive library.

- Alarm and Event logging/printing with date and time stamp
- Easy to use block structured programming
- Function blocks library includes control, timing, logic and maths blocks
- ISA-588 based control modules representing physical plant equipment such as valves, pumps
- User configurable function



Sequential Control

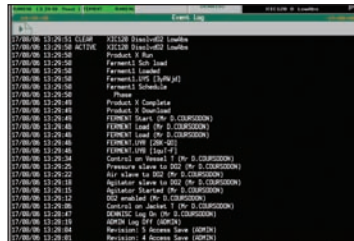
Sequential strategies are built using the powerful and intuitive Sequential Flow Chart (SFC) configurator. The sequential control capability enables the configuration of phases for batch process as defined by the ISA-588 process model.

- Ideal for configuration of phases for a batch process
- Multiple sequences running simultaneously
- Sequences can be loaded and unloaded as required by process
- Easy to use Sequential Flow Chart programming

ALARM AND EVENT MANAGEMENT

Eycon visual supervisor instruments provide alarm and event management for additional security and traceability of the process. Time stamps all alarms and event messages and provides a comprehensive audit trail as required by 21 CFR Part 11. For alarms, the alarm history log displays the "activated", "acknowledged", and "de-activated" times in a single line.

- Alarm and event logging/printing with date and time stamp
- Standard Historical and summary displays
- Tamperproof audit trail
- Single or multiple alarm acknowledge
- Ability to add notes to the alarm history log
- Option of including alarm and events in the log/batch logs
- Archive on demand



MULTI-SETPOINT PROGRAM

The Setpoint Programmer enables the operator to select and run a required Setpoint Program from a list. With the Preview facility, the operator can view the Program before running it.

- Up to 8 Profiled channels including 128 Digital events with up to 32 segments per Program
- Support for simultaneous running of multiple programs
- Stores over 200 Setpoint Programs
- Comprehensive control: Run, Hold, Skip, abort, Schedule, etc.
- On-line graphical monitoring
- Local and remote editor
- Load Setpoint Program via USB memory stick



RECIPE MANAGEMENT

The Eycon visual supervisor provides advanced and flexible recipe management. This powerful feature is easy and efficient for the operator to use. Automatic version control gives added peace of mind that the correct recipe is being downloaded. Recipes can be created, maintained and downloaded from the front panel. The order of execution of a recipe is the order of the values in the file in a top-down manner.

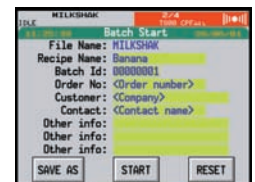
Recipe No	SP	SP(Low)	Product
Profile	False	False	
Profile	False	False	
Agit Start In	0.0	0.00	
Agit Start Out	48.0	48.00	
Agit Stop	100.0	100.0	
Agit In	100.0	100.0	
Air Start In	38.0	38.00	
Air Start Out	70.0	70.00	
Pre Start In	60.0	60.0	
Pre Start Out	100.0	100.0	
Profile Flag	100.0	100.0	
Temp in Run	100.0	100.0	
Stp in Run	100.0	100.0	

- On-line and off-line recipe editor
- Up to 500 parameters per recipe
- Automatic version control
- Ability to store multiple recipes, with download and capture facilities
- Advance recipe monitor with diagnostic information
- Optional multiple recipes in a single file, easy to maintain

BATCH CONTROL

Batch Manager enables an operator to control (i.e. load, start, hold, restart, abort) a batch, and monitor its progress from standard displays. Each batch is identified by either a unique number (automatically generated) or a batch ID entered by the operator.

- Configure a batch from Set-up page
 - Unique custom/automatic Batch id
 - Recipe selection
 - Six operator entry fields such as customer name, product type
- Comprehensive batch control including Start, Hold, Abort, Restart, Reset, etc.
- Automatic recipe download
- Automatic batch log and report generation



PRINTER SUPPORT

An application running on an Eycon Visual Supervisor can be configured to:

- Send alarm and event messages to the printer
- Send report files to the printer
- Support special control sequences for formatting the printed alarm and event messages
- Can be connected to any serial printer that supports ASCII code

REPORTS

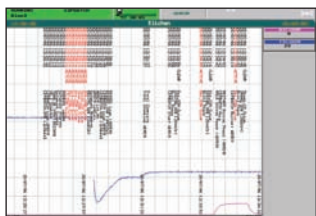
This feature allows Reports to be created and sent to the printer or log files on demand.

- Triggered/controlled from the strategy
- Configured using a "form" file
- Support for multiple reports
- Support for fixed text

TRENDING AND DATA LOGGING

The Eycon visual supervisor provides trending of analogue and digital values with data logging to historical files. Historical data can be stored in a secure, encrypted format or ASCII to best suit the application.

- Multiple log groups
- Batch, hourly, daily or on demand logging
- Multiple, simultaneous recording rates for different log groups
- Logged data files stored on the internal flash memory or archived to USB memory stick or FTP server
- Standard displays include horizontal and vertical trends, bar graphs and numerical data representation
- Log files can contain reports, alarms, events and operator messages
- Up to 3 remote file servers can be configured for added security of data
- On-line trending
- Local historical trending
- Trends can be incorporated into user-defined displays
- Audit trail information can be displayed on the trends



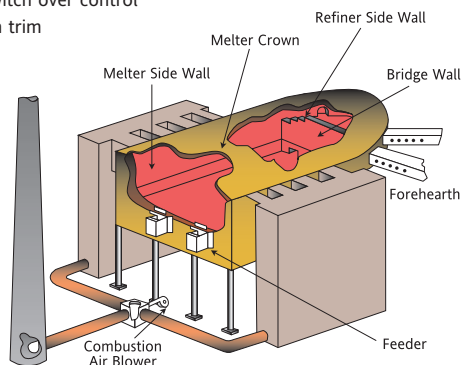
GLASS SOLUTIONS



Glass manufacture requires a high level of accuracy and reliability in the control to achieve consistent glass quality. The Eycon visual supervisor combined with the T2550 PAC provides an excellent solution for glass production lines. The multi-zone capability, control accuracy and easy monitoring of the process are ideal for areas such as furnaces and lehrs that require accurate and consistent control throughout several zones.

Glass Furnaces

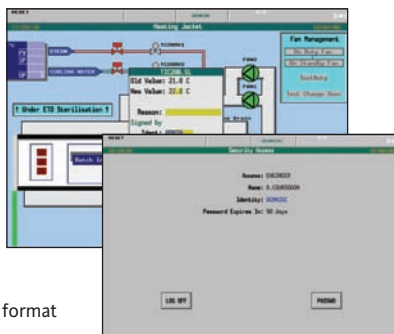
- Local visualisation
- World renowned accuracy of control
- Continuous, precise glass level control
- Cross-limiting lead/lag combustion control
- Redundant processors in T2550 PAC provide high availability where required
- Fuel flow/ratio control
- Fuel switch over control
- Oxygen trim



LIFE SCIENCES

21 CFR Part 11 Validatable

Auditor features on the Eycon visual supervisor have been specifically designed to meet the requirements of the FDA 21 CFR Part 11 regulation for Electronic Recorders and Electronic Signatures. Tamper proof Electronic data can be viewed, analysed and printed off-line using the secure Review package.



Secure Electronic Records

- Process Values and Audit Trails (Alarms, Events, Electronic Signature)
- Data and Time stamped
- Time Synchronisation
- Viewable in human readable format

Electronic Signature

- User actions with signing and authorisation
- Unique signatures required
- Automatic Log-off
- Minimum length password
- Access control according to authority level
- Automatic password expiry



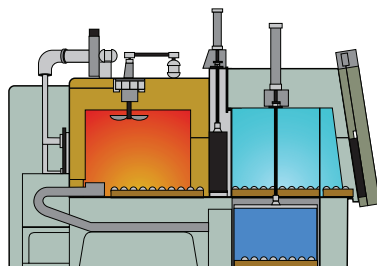
Security/Authorisation

The Visual Supervisor offers a comprehensive security, which controls access to various features and to individual parameters on the mimics as required by 21CFR11 Part 11.

- Controlled Access
- Each user with a unique ID and password
- Offers five level of access: Admin, Engineer, Commission Engineer, Operator and Locked
- Electronic signature with "Reason" and "Authorisation"

HEAT TREATMENT

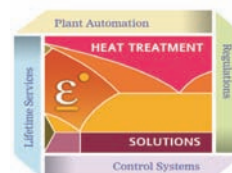
The integration of control and data logging combined with batch, recipe and setpoint programming makes the Eycon visual supervisor ideal for many heat treatment applications. Eurotherm has vast experience in providing heat treatments solutions in both regulated and non-regulated applications. The Eycon visual supervisor, combined with Eurotherm's expertise, could help you to increase productivity and lower costs.



Gas Carburising of Steel

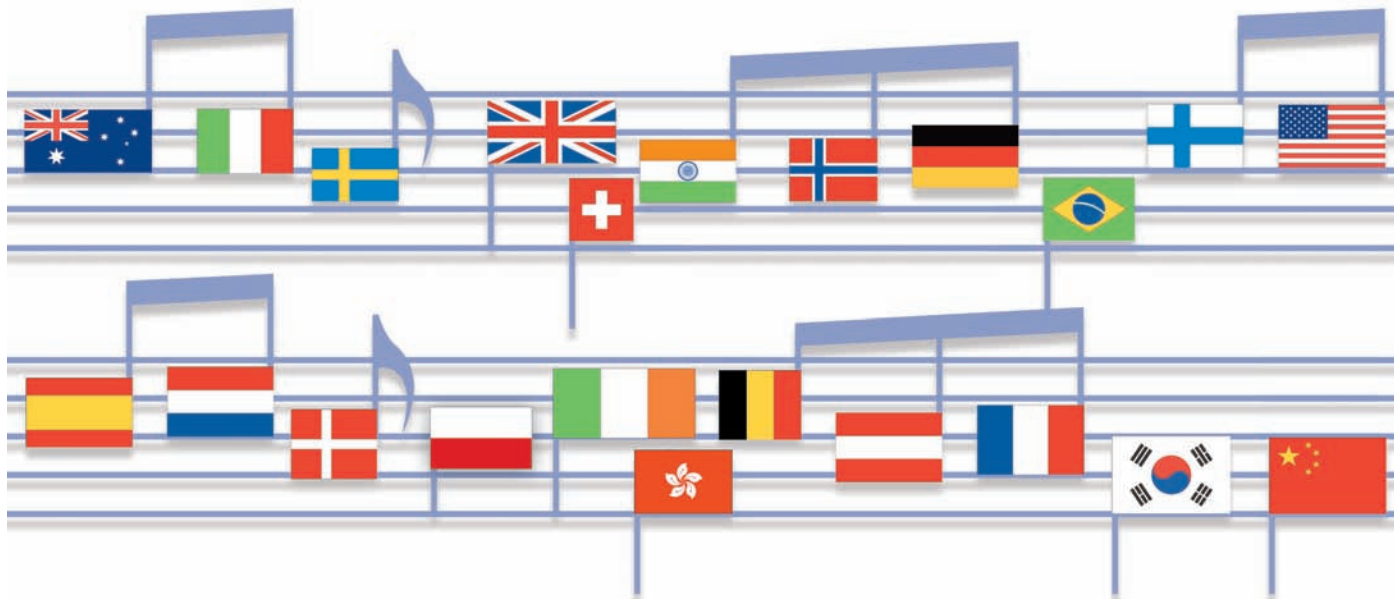
Surface hardening of steels by the chemical diffusion of carbon into the surface layer of a component requires the precise control of temperature, furnace atmosphere and time.

- Furnace sequencing
- Product transfer
- Data management
- Furnace diagnostics
- Recipe management
- Three gas IR
- Endo generator control
- Temperature programming and control
- Carbon potential and diffusion control
- Power/gas control
- Atmosphere probes and gas sequencing
- Quench sequence control
- Quench recipes
- Quench oil control



Eurotherm: International sales and service

Understanding and providing local support is a key part of Eurotherm business. Complementing worldwide Eurotherm offices are a whole range of partners and a comprehensive technical support team, to ensure you get a service you will want to go back to.



AUSTRALIA Sydney
Eurotherm Pty. Ltd.
T (+61 2) 9838 0099
F (+61 2) 9838 9288
E info.au@eurotherm.com

AUSTRIA Vienna
Eurotherm GmbH
T (+43 1) 7987601
F (+43 1) 7987605
E info.at@eurotherm.com

BELGIUM & LUXEMBOURG Moha
Eurotherm S.A./N.V.
T (+32) 85 274080
F (+32) 85 274081
E info.be@eurotherm.com

BRAZIL Campinas-SP
Eurotherm Ltda.
T (+5519) 3707 5333
F (+5519) 3707 5345
E info.br@eurotherm.com

CHINA
Eurotherm China
T (+86 21) 61451188
F (+86 21) 61452602
E info.cn@eurotherm.com

Beijing Office
T (+86 10) 63108914
F (+86 10) 63107291
E info.cn@eurotherm.com
Guangzhou Office
T (+86 20) 38106506
F (+86 20) 38106511
E info.cn@eurotherm.com

DENMARK Copenhagen
Eurotherm Danmark AS
T (+45 70) 234670
F (+45 70) 234660
E info.dk@eurotherm.com

FINLAND Abo
Eurotherm Finland
T (+358) 22506030
F (+358) 22503201
E info.fi@eurotherm.com

FRANCE Lyon
Eurotherm Automation SA
T (+33 478) 664500
F (+33 478) 352490
E info.fr@eurotherm.com

GERMANY Limburg
Eurotherm Deutschland GmbH
T (+49 6431) 2980
F (+49 6431) 298119
E info.de@eurotherm.com

HONG KONG
Eurotherm Hongkong
T (+85 2) 28733826
F (+85 2) 28700148
E info.hk@eurotherm.com

INDIA Chennai
Eurotherm India Limited
T (+91 44) 24961129
F (+91 44) 24961831
E info.in@eurotherm.com

IRELAND Dublin
Eurotherm Ireland Limited
T (+353 1) 4691800
F (+353 1) 4691300
E info.ie@eurotherm.com

ITALY Como
Eurotherm S.r.l
T (+39 031) 975111
F (+39 031) 977512
E info.it@eurotherm.com

KOREA Seoul
Eurotherm Korea Limited
T (+82 31) 2738507
F (+82 31) 2738508
E info.kr@eurotherm.com

NETHERLANDS Alphen a/d Rijn
Eurotherm B.V.
T (+31 172) 411752
F (+31 172) 417260
E info.nl@eurotherm.com

NORWAY Oslo
Eurotherm A/S
T (+47 67) 592170
F (+47 67) 118301
E info.no@eurotherm.com

POLAND Katowice
Invensys Eurotherm Sp z o.o.
T (+48 32) 2185100
F (+48 32) 2185108
E info.pl@eurotherm.com

SPAIN Madrid
Eurotherm España SA
T (+34 91) 6616001
F (+34 91) 6619093
E info.es@eurotherm.com

SWEDEN Malmo
Eurotherm AB
T (+46 40) 384500
F (+46 40) 384545
E info.se@eurotherm.com

SWITZERLAND Wollerau
Eurotherm Produkte (Schweiz) AG
T (+41 44) 7871040
F (+41 44) 7871044
E info.ch@eurotherm.com

UNITED KINGDOM Worthing
Eurotherm Limited
T (+44 1903) 268500
F (+44 1903) 265982
E info.uk@eurotherm.com
www.eurotherm.co.uk

U.S.A. Leesburg VA
Eurotherm Inc.
T (+1 703) 443 0000
F (+1 703) 669 1300
E info.us@eurotherm.com
www.eurotherm.com

Eurotherm is also represented in the following countries:

Algeria	Malaysia
Azerbaijan	Mali
Bahrain	Mexico
Bangladesh	New Zealand
Benin	Niger
Bosnia and Herzegovina	Nigeria
Bulgaria	Oman
Burkina Faso	Pakistan
Cameroon	Philippines
Canada	Puerto Rico
Czech Republic	Qatar
Egypt	Romania
Georgia	Russia
Greece	Saudi Arabia
Guinea-Conakry	Serbia and Montenegro
Hungary	Singapore
Indonesia	Slovak Republic
Iran	Slovenia
Iraq	South Africa
Israel	Sri Lanka
Ivory Coast	Thailand
Japan	Togo
Jordan	Tunisia
Kazakhstan	Turkey
Kenya	Turkmenistan
Kuwait	UAE
Latvia	Ukraine
Lithuania	Uzbekistan

ED57

Represented by:

© Copyright Eurotherm Limited 2008

Invensys, Eurotherm, the Eurotherm logo, Chessell, EurothermSuite, Mini8, Eycon, Eyris, EPower and Wonderware are trademarks of Invensys plc, its subsidiaries and affiliates. All other brands may be trademarks of their respective owners.

All rights are strictly reserved. No part of this document may be reproduced, modified, or transmitted in any form by any means, nor may it be stored in a retrieval system other than for the purpose to act as an aid in operating the equipment to which the document relates, without the prior written permission of Eurotherm limited.

Eurotherm Limited pursues a policy of continuous development and product improvement. The specifications in this document may therefore be changed without notice. The information in this document is given in good faith, but is intended for guidance only.

Eurotherm Limited will accept no responsibility for any losses arising from errors in this document.

