



INSTALLATION MANUAL

Solaris motors

This manual is suitable for the following types of motors:

- BLE35-13
- BLE45-20

Read the manual before you start the installation. If the instructions are not followed, this may lead to defects that cannot be claimed under warranty.

Visit our website www.brel-home.com for more information



Scan the QR code to view the manual and instructional videos

Table of contents

Warnings	3
Wiring	4
Installation and charging of the motor	4
Control with the BREL HOME app	4
Technical data Solaris motors	5
Transmitter functions	5
Initial installation of the motor	6
Additional functions of the motor	8
Change settings	10
Functions of the P1 key	12

Warnings



Do not place the motor in a damp environment



SIMPLIFIED EU DECLARATION OF CONFORMITY according to Article 10(9). I, Erik Budding, hereby declare on behalf of BREL Netherlands that the product complies with Directive 2014/53/EU.

The full text of the EU declaration of conformity can be consulted at the following internet address:
www.brel-home.com
 Brel Nederland b.v.



The motor must be protected against water and other moist influences



The motor must be installed correctly



The antenna must be in good condition. Do not shorten this. Make sure the antenna does not come into contact with other metals. If this does happen, it will affect the function

Erik Budding
 Director Brel Nederland



Do not allow children to play with the roller blind controls. Keep remote controls out of the reach of children. Children cannot recognize the danger of electronic devices and are therefore not allowed to work with them



Brel Netherlands B.V. is registered according to the transposition of Directive 2012/19/EU (the WEEE Directive) and to the transposition of Directive 2006/66/EC (the Battery Directive) at the Irish registry The Producer Register with the registration number 3408WB.

Wiring



Installation and charging of the motor

This installation has usually already been carried out at the factory.

Place the adapter and the adapter on the motor and secure the adapter with the clip.

Install the motor with the motor mounts making sure they are properly secured.

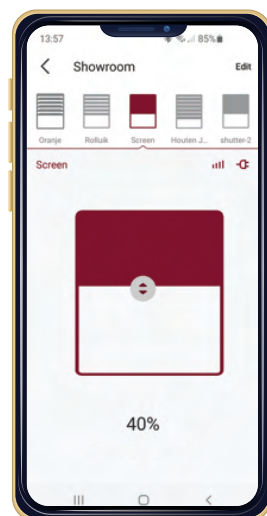
Mount the motor in the tube of the sun blinds.

The motor must be charged with a DC-212(EU), DC-213(UK) or DC-200 (US). When the battery is empty, the motor beeps 10 times. When the motor is charging, the LED lighting is red. When the motor is full, the LED lighting is green.

Control with the BREL HOME app

The Solaris motors can be controlled with your mobile phone in combination with a Home Box. The Home Box Mini is a USB WiFi dongle, Home Box Duo is a WiFi hub RS485 suitable for mono- and bi-directional and the Home Box Ultra is with WiFi and UTP/PoE.

In this App you can create time functions and scenarios. The BREL HOME app can be connected to Siri, Google Home and Alexa.



Technical data of the motor

	BLE35-13	BLE45-20
Motor voltage	DC 12V	DC 12V
Charging voltage	DC 12V	DC 12V
Maximum Charging Amperage	3.23 A	4.10 A
Power	38 W	50 W
Rotation speed	13Nm	20Nm
Speed (rpm)	07-09-12	08-10-12
Amperage	3.23 A	4.10 A
Moisture and dust protection	IP 44	IP 44
Memory of the motor	20 kanalen	20 kanalen
Temperature range °C	-10 tot +40	-10 tot +40
Frequency	433 MHz	433 MHz

Scan the QR code for the digital manuals and watch the instruction videos






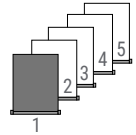
Transmitter functions



There are two P2 keys, it doesn't matter which one you use





Programming the first remote control/channel

-  The remote control can transmit 15 channels and therefore control multiple blinds. First, select a channel for operating the relevant roller blind. Make sure that you select a free channel (we recommend only 1 product per channel).
-  This remote has also channel 0. All blinds programmed in channel 1~15 are automatically programmed in this channel 0 and can be operated all at once.
-  In case you have selected the wrong channel, go to **Resetting factory settings**.



► Select the desired channel.

Step 1 Establishing connection



-  If you do not start programming within 10 seconds, the motor will exit programming mode.
-  During programming you must press the key briefly. If you need to hold it for a long time, this will be stated
-  The motor confirms each completed step with an up and down movement. (‡)
-  If a procedure does not go as planned, wait 20 seconds and then start again.



Hold down the P1 key until the motor moves up/down.

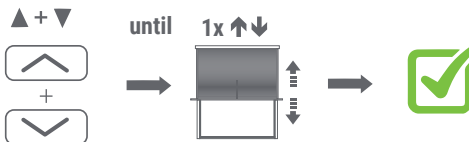
Houd de stop toets ingedrukt totdat de motor 2x op/naer beweegt.

afstandsbediening/
kanaal is toegevoegd

-  If NO end positions have been set, the motor will move in pulse mode. Then go to step 3.
 -  If end positions have been set, check the end positions. If correct, go to step 5.
- Warning: If the end positions are not correct, go to option A

Step 2 Reverse the direction of rotation (only if it is not correct)

Only possible if no end positions have been set



Press the UP and DOWN keys simultaneously until the motor moves up/down.

The direction of rotation of the motor has been adjusted.

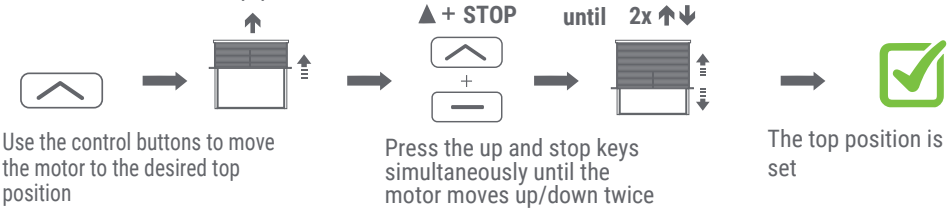
-  If no response, check whether the transmitter is blocked.

Step 3 Setting the end position

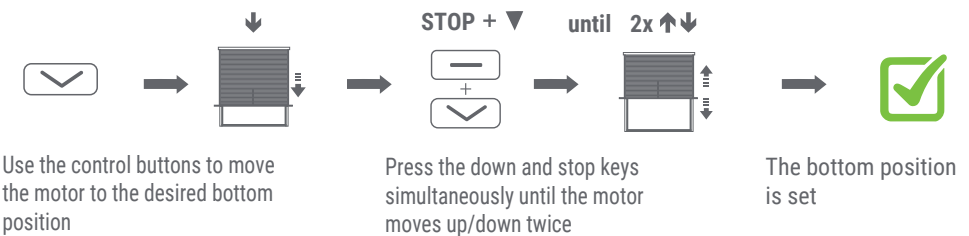
i To move the motor one step: briefly press the UP or DOWN key

i To move the motor continuously: press the UP or DOWN key for 3 seconds (NOTE! Press STOP in time)

1. Set the desired top position



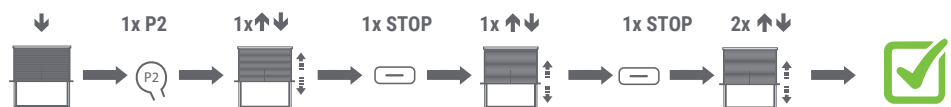
2. Set the desired bottom position



i The motor is now ready for use

i If you are not satisfied with the set end positions, go to option A, or to Reset the motor.

Step 4 Setting the favorite position (if desired)



Go to the desired favorite position

Press the P2 key. The motor moves up/down

Press the STOP key. The motor moves up/down

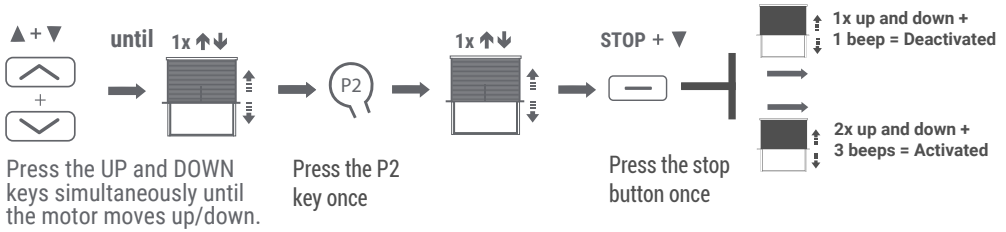
Press the STOP key. The motor moves up/down twice

i Press and hold the stop button for 3 seconds to go to the favorite position.

i Repeat this procedure to delete the favorite position.

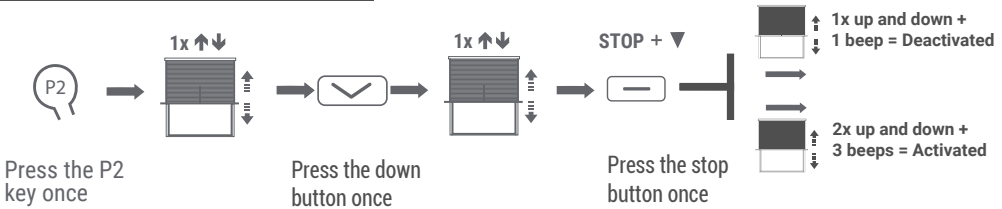
Additional features

Cloth stretch correction

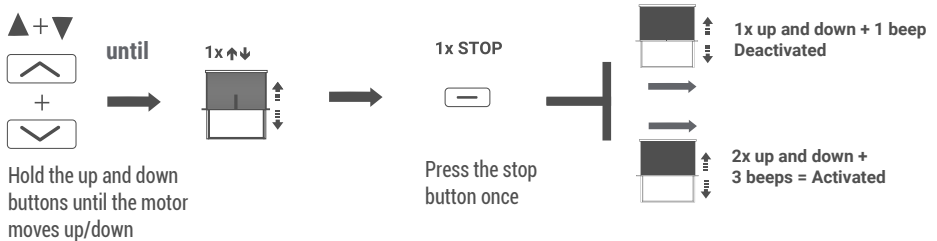


i Default is ON. The product will automatically check the upper limit every 50 times and adjust the top position. Please do not stop this process.

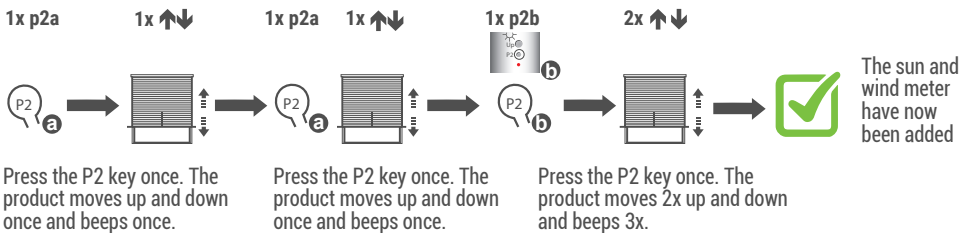
Obstacle detection + frost protection



Puls mode



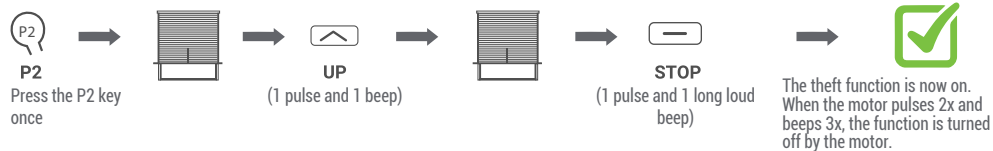
Sun- and windmeter



Repeating the top step removes the sun and windmeter.

Extra functions

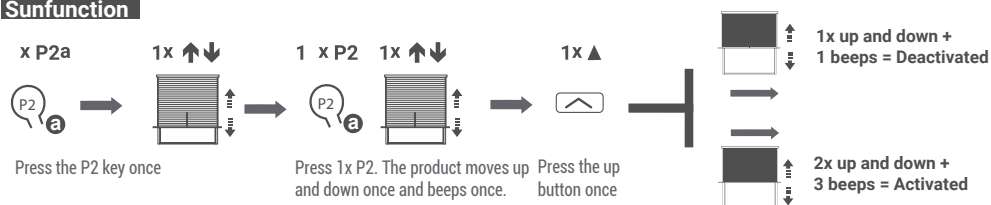
Theft function of sun and wind meters



*The factory default mode is ON; After the wind detection function is turned off, it can work normally for 30 minutes without receiving the response signal. If a wind sensor is connected to the motor, this function is activated. If the motor does not receive a signal from the wind sensor every 30 minutes, the awning will go up. If the wind sensor is defective, the awning will automatically retract after 30 minutes.

NB! When replacing, the sun and wind meter must first be removed from the engine's memory. If the sun and wind meter is defective, the theft function must be turned off

Sunfunction

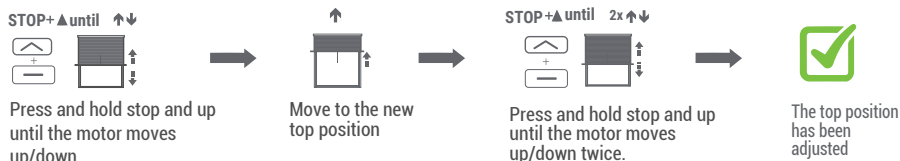


By repeating these steps, you can turn the sunfunction on/off

Change settings

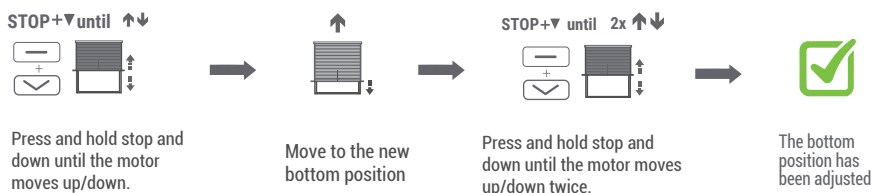
Adjusting the top position

 If adjustment is not possible, check the lock function or reset the motor

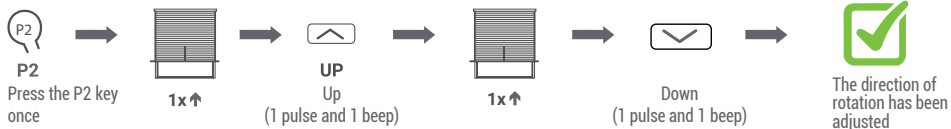


Adjusting the bottom position

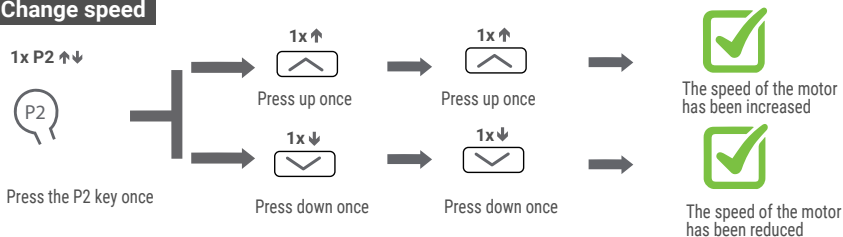
 If adjustment is not possible, check the lock function or reset the motor



Change direction of rotation




Change speed



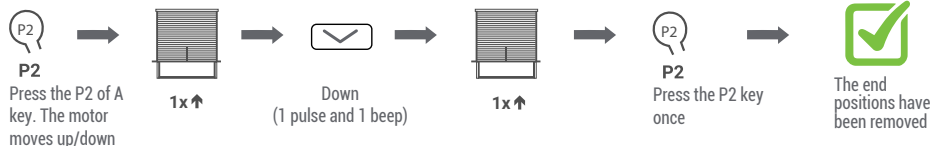
 The motor is set to the highest speed and the slow stop is activated

 NB! The BLE45-20 is not equipped with the slow stop

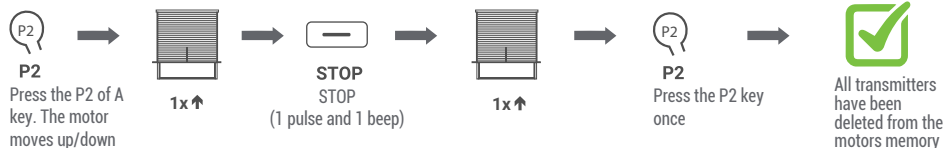
 To deactivate the slow stop, the motor must first be at the lowest speed. Because the motor is at the highest speed, you must first reduce the speed twice to set the motor to the lowest speed. Then reduce the speed once more to deactivate the slow stop. To activate the slow stop again, increase the speed twice until the motor is at the highest speed. Then increase the speed once more to activate the slow stop.

Change settings

Delete end positions



Delete all channels



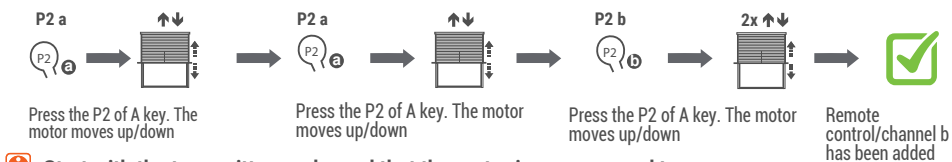
Registering an extra remote control/channel

Only possible if the end positions have been set

a = Existing remote control/channel

b = New remote control/channel

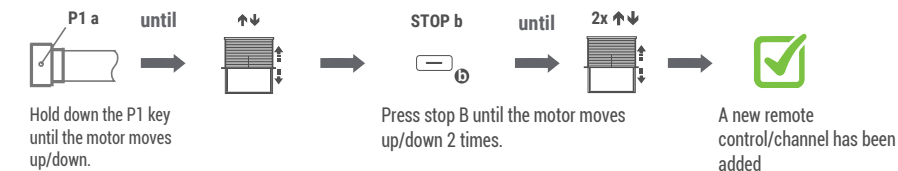
Via the existing transmitter



i Start with the transmitter or channel that the motor is programmed to

i To delete a transmitter/channel repeat the procedure

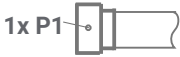
Via P1 key (If the old transmitter is lost or broken)



i Start with the transmitter or channel that the motor is programmed to

i To delete a transmitter/channel repeat the procedure

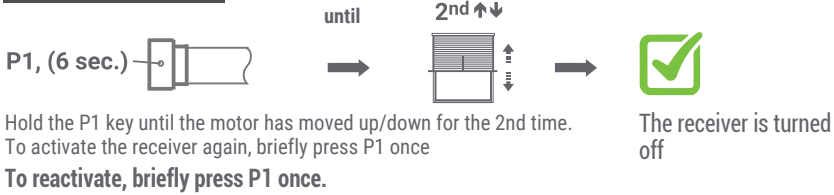
Functions of the P1 key can be used as a control button in case of emergency



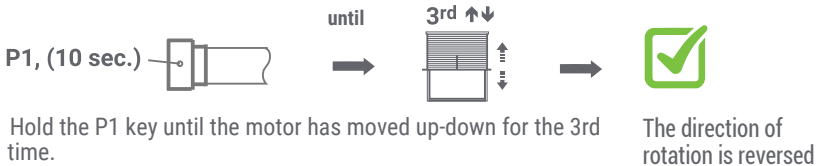
The motor moves up, stops or moves down when you press the P1 key

Press the P1 key briefly once

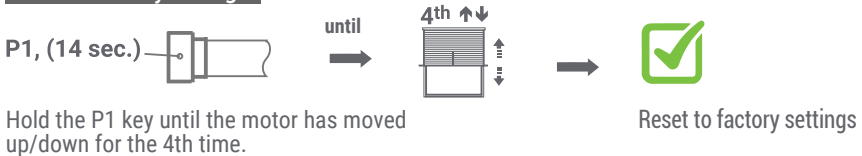
Turn off the receiver



Changing the direction of rotation



Reset to factory settings



 To reprogram the motor go to step 1