



INSTALLATIE HANDLEIDING

Triton motoren

Deze handleiding is geschikt voor de volgende type motoren:

- BR35-10
- BR35-13
- BR45-20
- BR45-40

Lees de handleiding voordat je begint met de installatie. Als de instructies niet worden opgevolgd kan dit leiden tot defecten welke niet onder garantie kunnen worden geclaimd.

Bezoek onze website www.brel-home.com voor meer informatie



Scan de QR-code om de handleiding en instructie video's te bekijken

Inhoudsopgave

Waarschuwingen	3
Bedrading	4
Installatie van de motor	4
Besturen met de BREL HOME app	4
Technische data Triton motoren	5
Functies handzender	5
Eerste installatie van de motor	6
Instellingen wijzigen	7
Extra functies	9

Waarschuwingen

Conformiteit Verklaring

Dit product voldoet aan de essentiële eisen van de volgende Europese richtlijnen:

Richtlijn voor Radioapparatuur (RED) 2014/53/EU: Voldoet aan de vereisten voor radiocommunicatie, zoals veiligheid, gezondheid, en efficiënt gebruik van het radiospectrum.

Laagspanningsrichtlijn (LVD) 2014/35/EU: Voldoet aan veiligheidsvoorschriften voor elektrische apparatuur die werkt bij nominale spanningen tussen 50V en 1000V voor wisselstroom.

Richtlijn Elektromagnetische Compatibiliteit (EMC) 2014/30/EU: Voldoet aan de normen voor elektromagnetische emissies en immuniteit om storingen te voorkomen.

Richtlijn voor Bepanking van Gevaarlijke Stoffen (RoHS) 2011/65/EU: Voldoet aan de richtlijnen met betrekking tot het gebruik van gevaarlijke stoffen.

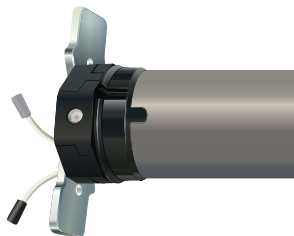
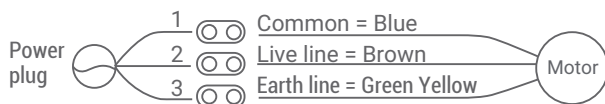
Richtlijn voor Machinerichtlijn (MD) 2006/42/EC: Voldoet aan de veiligheidsvoorschriften voor het ontwerp en de fabricage van machines, inclusief mechanische en elektrische veiligheid.

Opmerking: Dit document is een samenvatting. Raadpleeg de volledige conformiteitsverklaring voor gedetailleerde informatie.



Wiring

3 WIRES: 220V/50Hz



Installatie van de motor

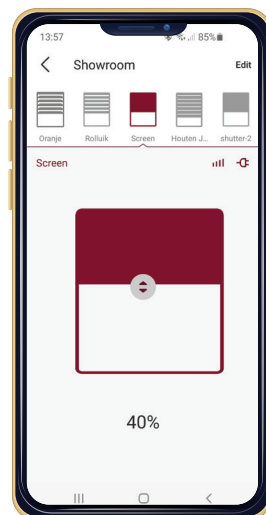
This installation is usually already done at the factory.

Fit the adapter and carriage to the motor and secure the carriage with the clip. Install the motor with the motor brackets and be sure this is secure. Mount the motor in the tube of the blinds

Besturen met de BREL HOME app

De Triton motoren kunnen in combinatie met een Home Box bediend worden met je mobiele telefoon. De Home Box Mini is een USB WiFi dongel, Home Box Duo is een WiFi hub RS485 geschikt voor mono- en bi-directioneel en de Home Box Ultra is met WiFi en UTP/PoE.

In deze App kun je tijdfuncties en scenario's maken. De BREL HOME app kan verbonden worden met Siri, Google Home en Alexa.



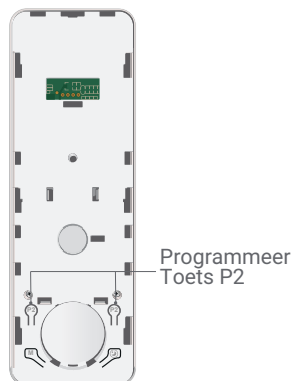
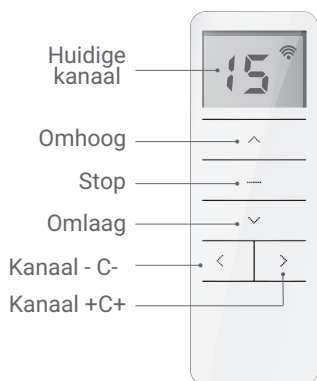
Technische data van de motor

	BR35-10	BR35-13	BR45-20	BR45-40
Ingaand	3 aderig	3 aderig	3 aderig	3 aderig
Werkspanning	230V	230V	230V	230V
Vermogen	121W	121W	145W	198W
Amperage	0.53A	0.53A	0.64A	0.86A
Kracht (Nm)	10	13	20	40
Toeren (Tpm)	17	14	15	15
Lengte motor (mm)	593	590	615	645
Diameter motor (mm)	35	35	45	45
Diameter motorkop (mm)	40	40	60	60
Antenne (mm)	170	170	170	170
Kabel (mm)	5000	5000	5000	5000
IP waarde	IP44	IP44	IP44	IP44

The following specifications apply to all Triton motors:



Frequency	433 MHz
Range	25m indoor to 100m outdoor
Capacity	10 channels or transmitters
Operating temperature	-10°C to +55°C
Thermal protection	Yes
Maximum runtime	4 minutes

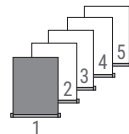
Functies handzender



Er zijn twee P2 toetsen het maakt niet uit welke je gebruikt





Het programmeren van de eerste afstandsbediening/kanaal

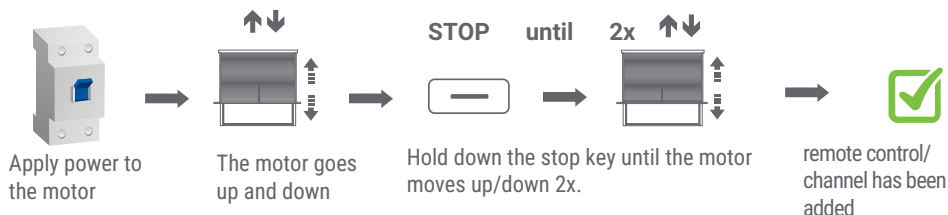
-  The remote control can transmit on 15 channels and thus also control multiple motors. Therefore, first choose the desired channel for the respective product/motor. Choose a free channel. We recommend 1 motor per channel.
-  The remote control has a channel 0. All motors programmed on channels 1-15 are automatically on channel 0.



► Select desired channel

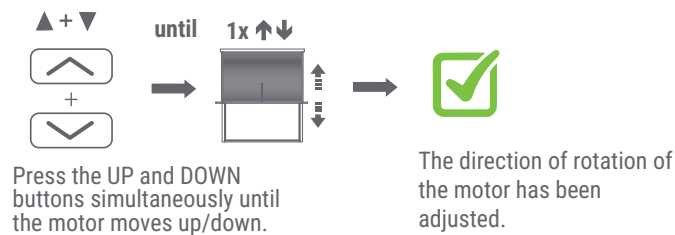
Step 1 Establishing a connection


-  If you do not start programming within 10 seconds, the motor will exit programming mode.
-  During programming you need to press the button briefly. If you have to hold it down for a long time it will say
-  The motor confirms each completed step with an up and down movement .
-  If a procedure does not go as planned, wait 20 seconds and then start again.



Step 2 Changing rotation of direction (only if incorrect)

Change the direction of rotation within 30 sec after the remote control is added.



-  If no response check whether the handheld transmitter is locked.

If you try to change the direction of rotation after 30 sec, you should first remove the remote control from the motor's memory by following Step 1 again. Then repeat Step 1 again to add the remote control again. After that, change the direction of rotation immediately.

Step 3 Setting the end position

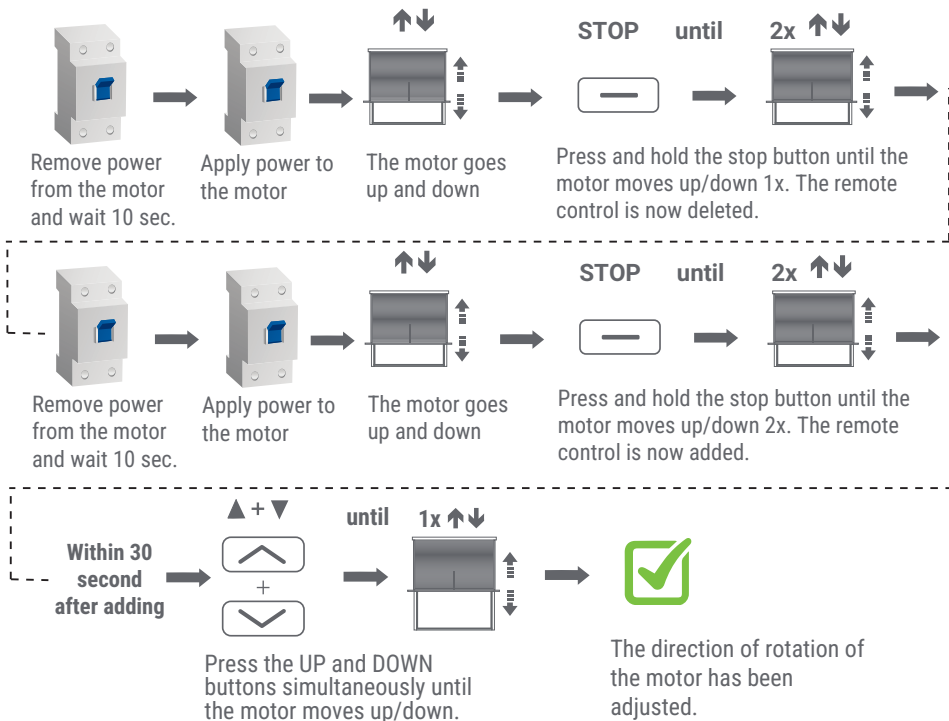


To determine where to stop the motor, you should use the adjustment pin supplied. The large arrow indicates the direction of rotation to change the end position. By turning to the PLUS or MINUS you can change the end positions. By turning to MIN, the motor will make fewer revolutions.

You should do this for both directions of rotation. If the motor stops by itself, do not turn more than 1 revolution to MIN. If you turn more than 1 revolution to MIN, you may upset the adjustment. If the motor runs too far, let the motor run back before turning to MIN.

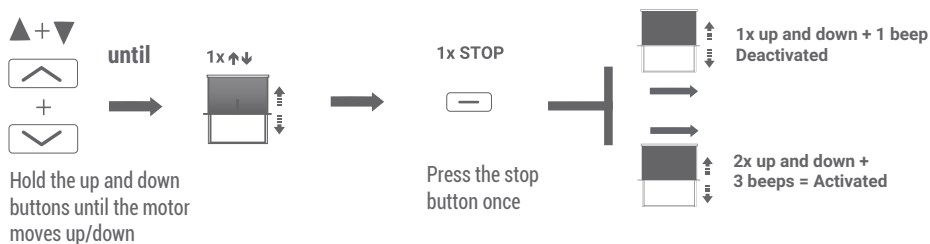
Changing setting

Changing rotation of direction

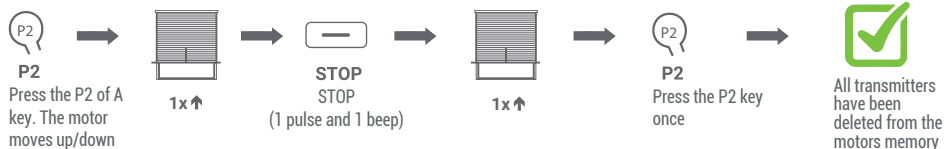


Changing settings

Puls mode



Delete all channels



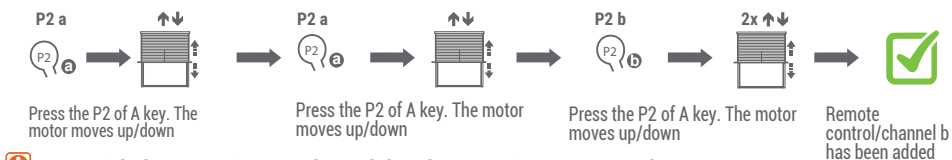
Registering an extra remote control/channel

Only possible if the end positions have been set

a = Existing remote control/channel

b = New remote control/channel

Via the existing transmitter

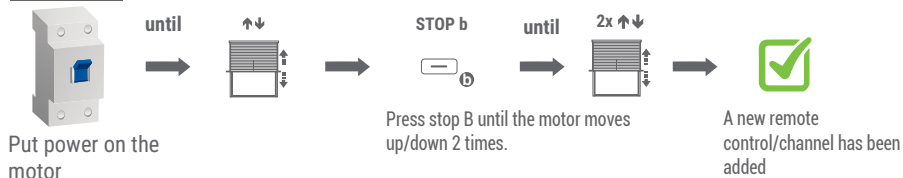


i Start with the transmitter or channel that the motor is programmed to

i To delete a transmitter/channel repeat the procedure

Via motor

(If the old transmitter is lost or broken)

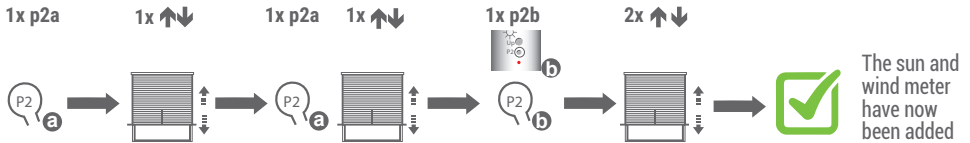


i Start with the transmitter or channel that the motor is programmed to

i To delete a transmitter/channel repeat the procedure

Extra functions

Sun- and windmeter



Press the P2 key once. The product moves up and down once and beeps once.

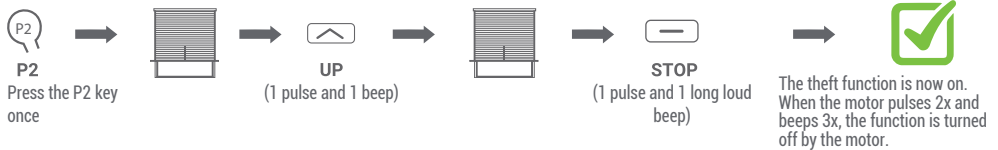
Press the P2 key once. The product moves up and down once and beeps once.

Press the P2 key once. The product moves 2x up and down and beeps 3x.

The sun and wind meter have now been added

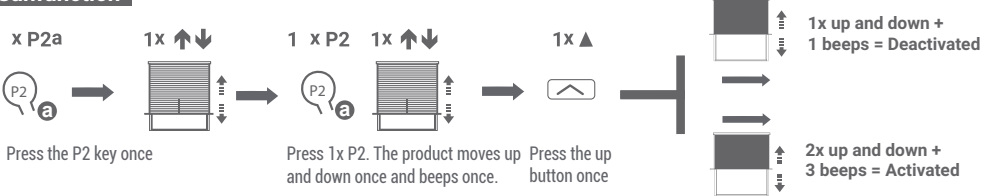
Repeating the top step removes the sun and windmeter.

Theft function of sun and wind meters



*The factory default mode is ON; After the wind detection function is turned off, it can work normally for 30 minutes without receiving the response signal. If a wind sensor is connected to the motor, this function is activated. If the motor does not receive a signal from the wind sensor every 30 minutes, the awning will go up. If the wind sensor is defective, the awning will automatically retract after 30 minutes. **NB! When replacing, the sun and wind meter must first be removed from the engine's memory. If the sun and wind meter is defective, the theft function must be turned off**

Sunfunction



By repeating the above, you can turn the sun function on/off