



INSTALLATION MANUAL

DD1680

Bi-directional Receiver



BREL HOME

www.brel-home.com

Scan the QR code here for the manual
to download & view instructional videos.

Visit our website for more
manuals and information.

DD-1680

Warning

It is important to follow this instruction for your own safety.



Do not operate the motor in humid surroundings.



BREL-Motors declares that this motor has been manufactured according to the guidelines of the CE standard 1999/5/EC



The motor must be protected from direct moisture influences.



Keep the antenna in a good condition and do not shorten. The antenna should not come into contact with other metal parts otherwise it will reduce the effect.



The motor must be installed correctly.



This product must not be disposed of with household waste. Take the remote control and battery to the designated collection points"



Children cannot recognize the dangers of electrical equipment and may therefore not work with it.

Technical specifications

Wireless receiver

Light-touch

Input voltage AC220CV/50Hz

Output voltage DC 24V

Output power 20W

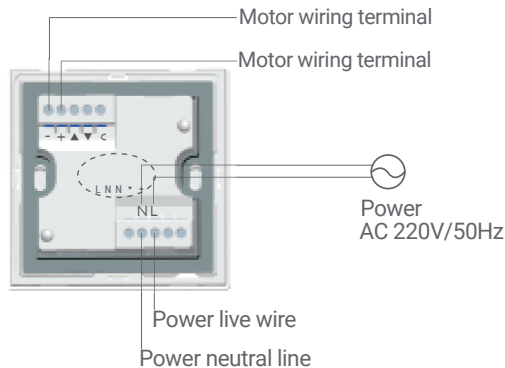
Working temperature -20°C~+55°C

Stall detection rebound function

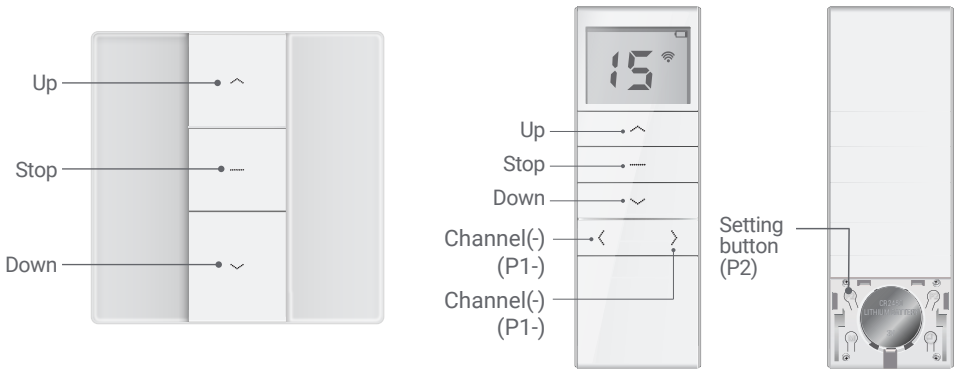
One DD1680 receiver can store Max.10 channels, after more than 10 channel, only the last channel will be covered recycledly

Wiring

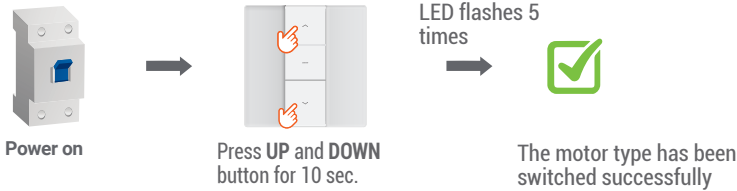
NOTE If press UP button, the sliding window actuator will close the window, then pls change the wires of the motor that connect to "+" and "-" wiring terminal.



Functions Remote Control

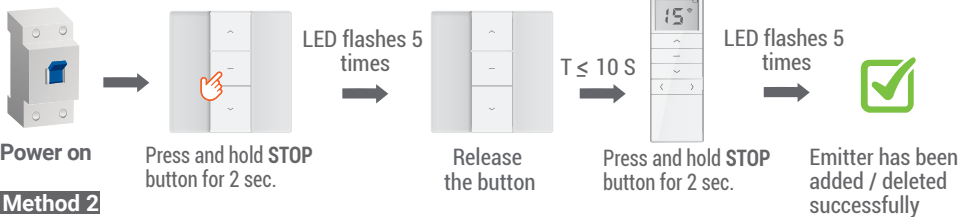


Switch Motor Types



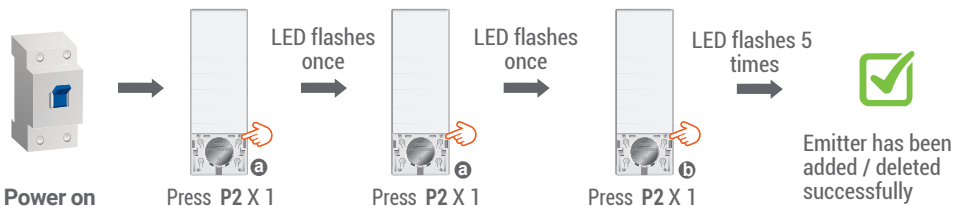
Add / delete Emitter

Method 1




Method 2

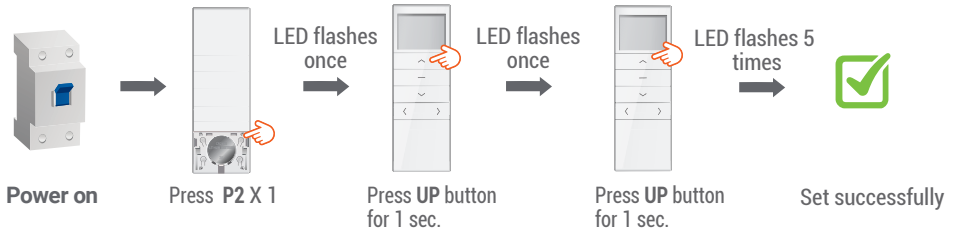
Emitter **a** is paired one while **b** is the one to be deleted.




Setting Motor Resistance

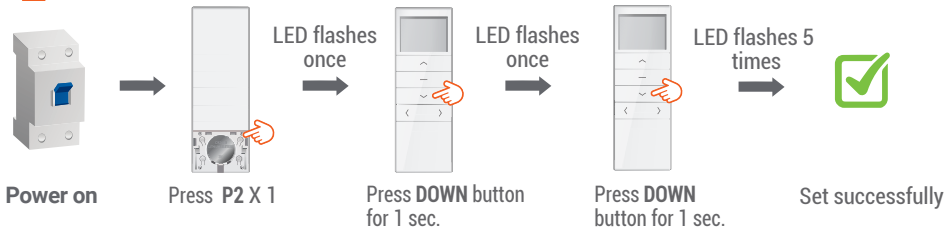
Increase motor resistance

 If the LED flashes 10 times, the motor resistance has already been the Max. grade.



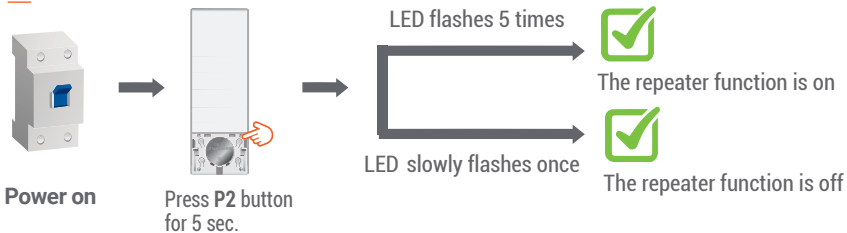
Decrease motor resistance

 If the LED flashes 10 times, the motor resistance has already been the Min. grade.



Repeater Function

 The factory default function is off.



Radio Function Setting

 Turn on the radio function

