



# INSTALLATION MANUAL

Manual Brel Bi-Directional curtain motor

**BG45**



BREL HOME

[www.brel-home.com](http://www.brel-home.com)



BG-45

Visit our website for more  
manuals and information.

Scan the QR code here for the manual  
to download & view instructional videos.

## Table of Content

Warning	2
Wiring/Installing the motor/Compatible with hub	3
Technical data of the motor/Reach/Charging the motor	4
Functions remote control	5
Settings	5

### Warning



Do not operate the motor in humid surroundings.



BREL-Motors declares that this motor has been manufactured according to the guidelines of the CE standard 1999/5/EC



The motor must be protected from direct moisture influences.



Keep the antenna in a good condition and do not shorten. The antenna should not come into contact with other metal parts otherwise it will reduce the function.



The motor must be installed correctly.



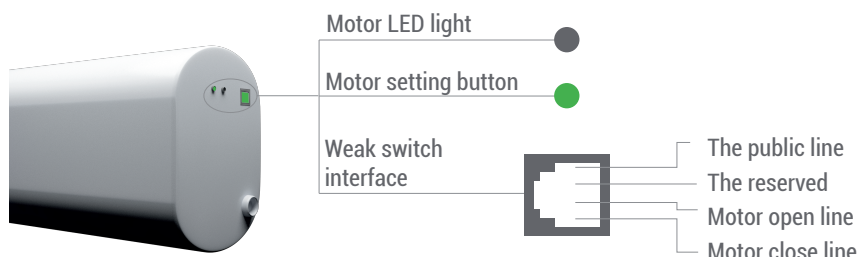
Do not allow children to play with the roller blind control unit. Keep remote controls out of reach of children. Children cannot recognize the dangers of electrical equipment and are therefore not allowed to work with it

Keep these instructions for future reference

## Wiring

### Weak electric Switch connection method of curtain motor

(The specific operation on the back as shown in the <weak electric switch mode selection>action bar)



## Installing the Motor

**You must perform this installation yourself.**

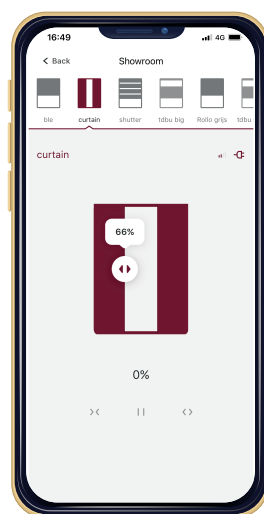
Attach the rail to the wall of ceiling. Take the motor and press in the grey clip. Hold it, place the motor head in the rail and turn the motor until tightened. If the motor doesn't turn smoothly, move the first runner and turn the motor in at the same time.

## Works with BREL HOME USB



Brel-Home-USB

With the Brel-Home-USB you can control your motor with your Phone. You can make a time schedule and make scenario's. The Brel-Home-USB can be connect to Siri, Google Home and Alexa.



## Technical data of the motor

TYPE BG45

Motor Voltage	230 V
Power	45 W
Torque	0.8 Nm
Speed	20 cm/s
Moisture and Dust	IP40

Storage capacity is up to 20 channels

Working temperature of the motor



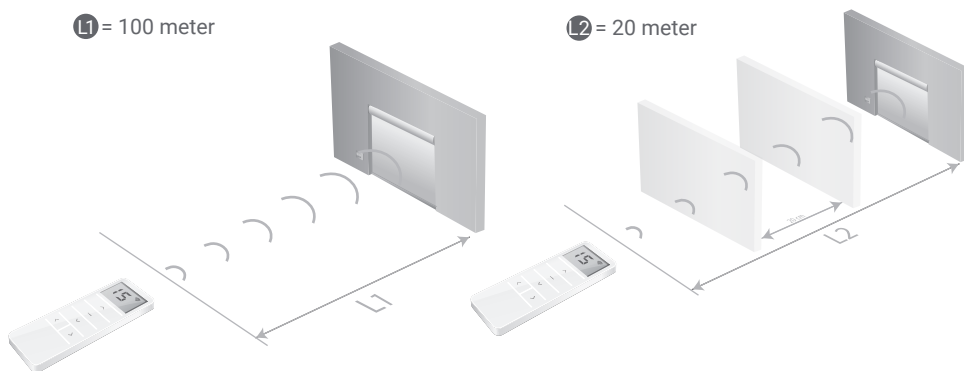
**Heavy Use:**  
-20°C tot +70°C

**Normal Use:**  
-10°C tot +40°C

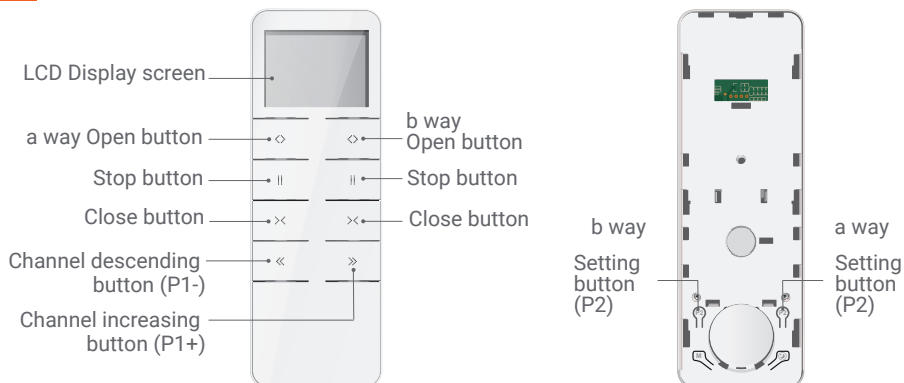
## Reach

L1 = 100 meter

L2 = 20 meter



## Functions Remote Control

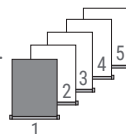


Scan the QR code here for the manual to download & view instructional videos

BG45

### Step 1 Setting up the first remote/channel

- The remote control can transmit 15 channels and therefore control multiple blinds. First, select a channel for operating the relevant roller blind. Make sure that you select a free channel (we recommend only 1 product per channel).
- This remote has also channel 0. All blinds programmed in channel 1~15 are automatically programmed in this channel 0 and can be operated all at once.
- In case you have selected the wrong channel, go to **Resetting factory settings**.



► **Select the desired channel.**

### Step 2 Establishing connection

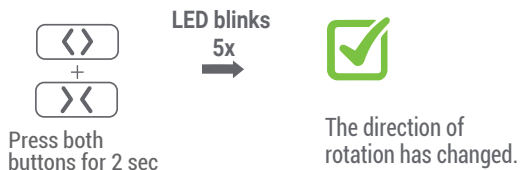
- In the procedures described here is a maximum interval of 10 seconds to complete each subsequent action: if you wait any longer, the system will leave the edit mode.
- Normally a button only needs to be pressed shortly. If you need to press and hold a button for several seconds this will be state clearly.
- The system will confirm each completed step with moving the blind up and down (↕).
- If a procedure does not play out as described, wait for 20 seconds and start again from the beginning of that step/procedure.



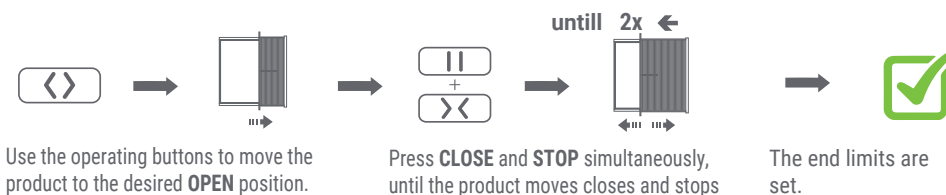
- If NO end positions are set, the product will move in the pulse / step operation. Go then to STEP 3. If end positions are set, the product will continue to its end position. Go then to STEP 5.
- WARNING:** It is possible that the correct end positions have not been set. Go then to OPTION A.

### Step 3 Adjusting the direction of rotation *(Only if the direction of rotation is not correct)*

Only possible if no end positions are set.



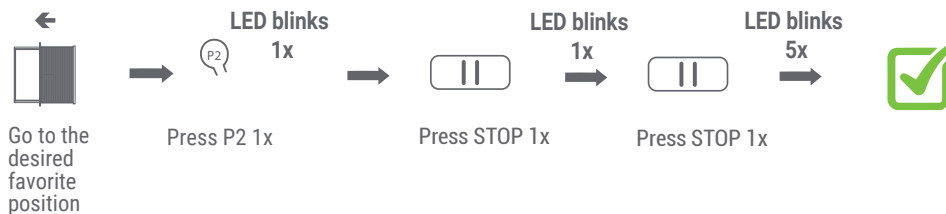
### Step 4 Setting the End Limits



The curtains are now ready for use.

If you are not satisfied with the result of setting the end positions, go to Option A - adjusting positions or **Resetting factory settings**.

### Step 5 Setting the favorite position (If desired)



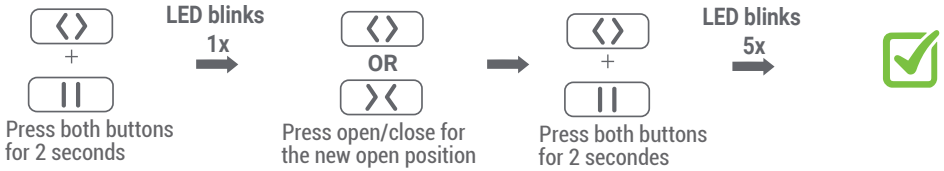
Press and hold **STOP** for 3 seconds to move to the favorite position.

Since the procedure is identical, to remove it repeat the steps.

## Additional settings

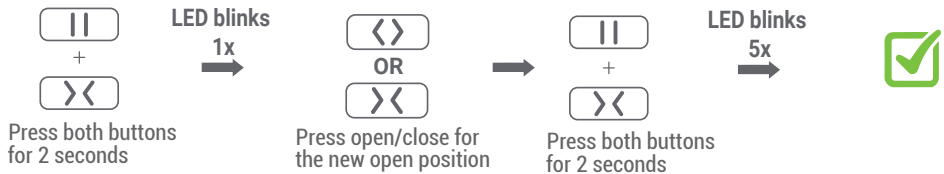
### Option A Adjusting the open position

**i** If adjustment is not possible, go to **Resetting factory settings**.



### Adjusting the close position

**i** If adjustment is not possible, go to **Resetting factory settings**.



### Option B Learn Extra transmitter/channel

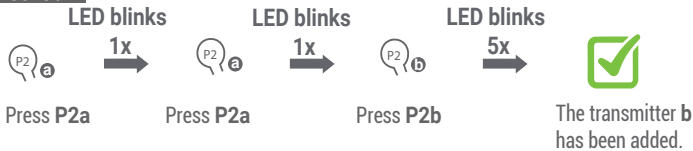
Only possible when end limits are set.

**a** = Already existing transmitter/channel

**b** = New transmitter/channel

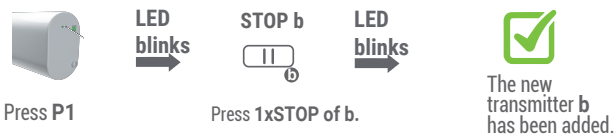
**NOTE** To delete the transmitter / channel repeat the procedure.

#### Method 1

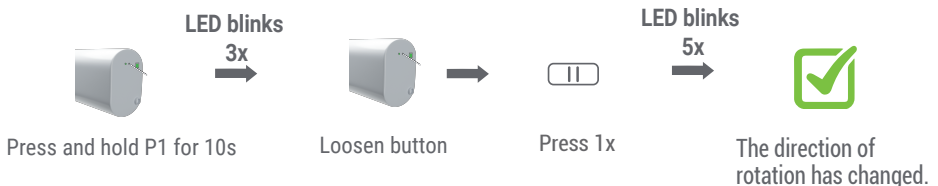


**i** Make sure the new transmitter is in the desired channel.

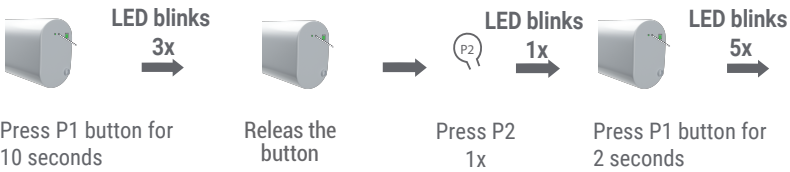
#### Method 2 (In case the old transmitter is lost or broken)



### Option C Pulse / jog control



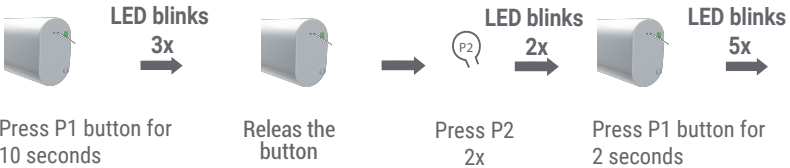
## External Switch Mode Pushbutton switch mode (Factory default)



Switch mode switched successfully.

### Mechanical switch mode

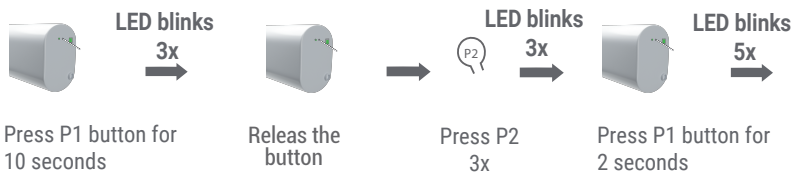
Check both upper and lower limits are set, the motor is power-on (1 jog), within 10S.



Switch mode switched successfully.

### Electronic switch mode

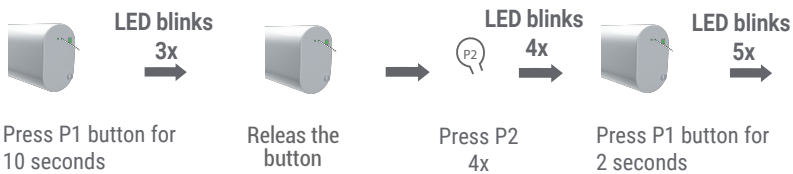
Check both upper and lower limits are set, the motor is power-on (1 jog), within 10S.



Switch mode switched successfully.

### Single button pushbutton switch mode

Check both upper and lower limits are set, the motor is power-on (1 jog), within 10S.



Switch mode switched successfully.



**Additional settings P1 button** Can be used without a transmitter as an operating button.



The LED light blinks when pressed P1

**Switching off the receiver**



until



Press and hold P1 until the LED light blinks 2x.

The Receiver switched off.

To reactivate the receiver, briefly press P1 once.

**Changing the direction of rotation**

Method 1 (with end limits)



LED blinks  
3x



LED blinks  
5x



Press and hold P1 for 10s

Loosen button

Press 1 second

The direction of rotation has changed.

Method 2 (without end limits)



+



Press both buttons for 2 sec

LED blinks  
5x



The direction of rotation has changed.

**Resetting to factory settings**



LED blinks 8x



Press the P1 button for 14 seconds

Releas the P1 button

Resets to factory settings.

**!** To apply new settings: go to step 1

**Changing Batteries**

