



INSTALLATION MANUAL

Manual Brel Bi-Directional silent motor

BEQ35-10DD

Read the manual before you begin the installation. If these instructions are not followed, this may lead to defects and injury in which warranty can't be claimed.



www.brel-home.com

Visit our website for more manuals and information



BEQ35-10DD

Scan the QR code here for the manual to
download & view instructional videos



Table of Content

| | |
|--|---|
| Warning | 2 |
| Wiring/Installing the motor/Compatible with hub | 3 |
| Technical data of the motor/Reach/Charging the motor | 4 |
| Functions remote control | 5 |
| Settings | 5 |

Warning



Do not operate the motor in humid surroundings.



BREL-Motors declares that this motor has been manufactured according to the guidelines of the CE standard 1999/5/EC



The motor must be protected from direct moisture influences.



Keep the antenna in a good condition and do not shorten. The antenna should not come into contact with other metal parts otherwise it will reduce the function.



The motor must be installed correctly.

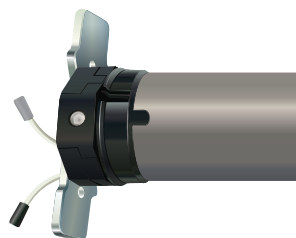
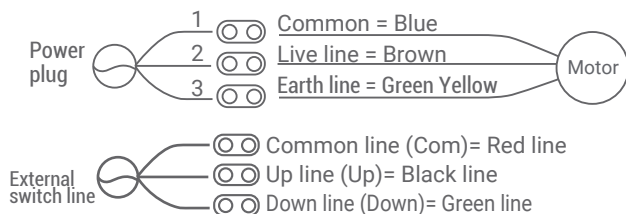


Do not allow children to play with the roller blind control unit. Keep remote controls out of reach of children. Children cannot recognize the dangers of electrical equipment and are therefore not allowed to work with it

Keep these instructions for future reference

Wiring

3 WIRES: 220V/50Hz



Installing the Motor

These assemblies are usually already done in the factory

Attach the crown and wheel to the motor and place the clip on the shaft of the motor so that the wheel is fixed to the motor.

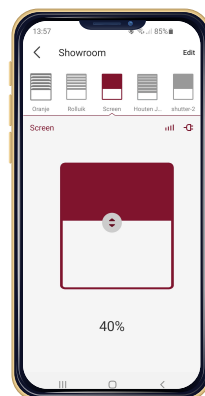
Install the motor with the motorbracket on the product and take care that it is secured.

Place the motor in the tube of the roller/shutter.

Works with BREL HOME USB



Brel-Home-USB



With the Brel-Home-USB you can control your motor with your Phone. You can make a time schedule and make scenario's. The Brel-Home-USB can be connected to Siri, Google Home and Alexa.

Technical data of the motor

BEQ35-10

| | |
|------------------------------|---------|
| Voltage | AC 230V |
| Power | 144W |
| Torque | 10 Nm |
| Maximum motor runtime | 4 min |
| Speed | 17 rpm |
| Amperage | 0.63 A |
| Moisture and dust protection | IP44 |

Heavy Use: Normal Use:
 -20°C tot +70°C -10°C tot +40°C

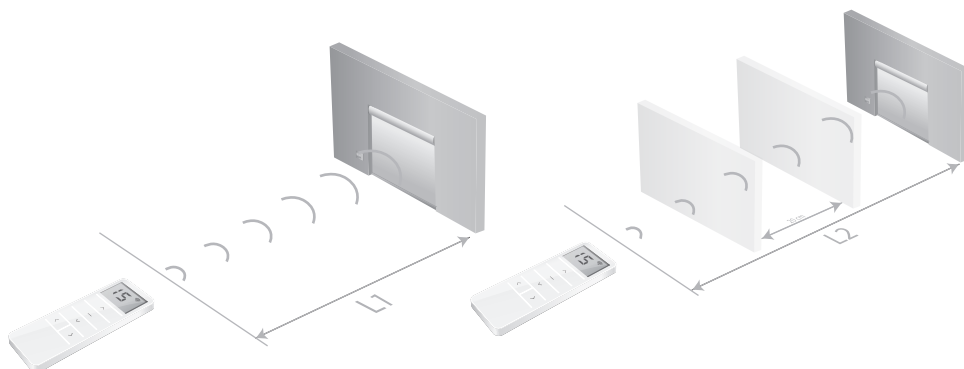
⚠NOTE

If the motor has been running continuously for 4 minutes, it may become too hot and then stop. After approximately half an hour, this one will continue to run.

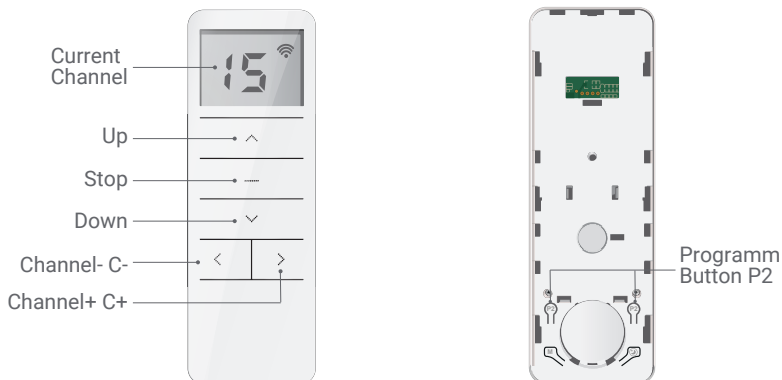
Reach

Ⓛ1 = 100 meter

Ⓛ2 = 20 meter



Functions Remote Control



There are 2x P2 buttons, no matter which one you press.

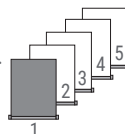


Scan the QR code here for the manual to download & view instructional videos

BEQ35-10DD

Step 1 Setting up the first remote/channel

- The remote control can transmit 15 channels and therefore control multiple blinds. First, select a channel for operating the relevant roller blind. Make sure that you select a free channel (we recommend only 1 product per channel).
- This remote has also channel 0. All blinds programmed in channel 1~15 are automatically programmed in this channel 0 and can be operated all at once.
- In case you have selected the wrong channel, go to **Resetting factory settings**.



► **Select the desired channel.**

Step 2 Establishing connection

- In the procedures described here is a maximum interval of 10 seconds to complete each subsequent action: if you wait any longer, the system will leave the edit mode.
- Normally a button only needs to be pressed shortly. If you need to press and hold a button for several seconds this will be state clearly.
- The system will confirm each completed step with moving the blind up and down (↑↓).
- If a procedure does not play out as described, wait for 20 seconds and start again from the beginning of that step/procedure.

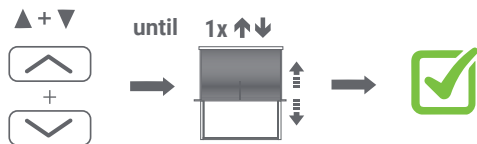


- If NO end positions are set, the product will move in the pulse / step operation. Go then to STEP 2. If end positions are set, the product will continue to its end position. Go then to STEP 4.

NOTE It is possible that the correct end positions have not been set. Go then to **OPTION A**.

Step 3 Adjusting the direction of rotation

Only possible if no end positions are set.



Press **UP** and **DOWN** button simultaneously, until the product moves.

The direction of rotation of the motor is **OK**.

Step 4 Setting the End Limits

To move the motor one step: briefly press the **UP** or **DOWN** button

To move the motor continuously: press the **UP** or **DOWN** button for 3 seconds (ATTENTION! Press **STOP** in time)

1. Set the desired top position



Use the operating buttons to move the product to the desired **TOP** position

Press **UP** and **STOP** simultaneously, until the product moves 2x and beeps 3x.

The desired top position is set.

2. Set the desired bottom position



Use the operating buttons to move the product to the desired **BOTTOM** position.

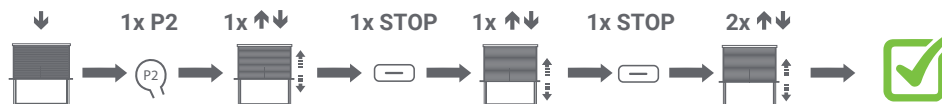
Press **DOWN** and **STOP** simultaneously, until the product moves 2x and beeps 3x.

The desired bottom position is set.

The roller blind is now ready for use.

If you are not satisfied with the result of setting the end positions, go to Option A - adjusting positions or **Resetting factory settings**.

Step 5 Setting the favorite position (If desired)



Go to the desired favorite position

Press 1x **P2** The product moves 1x up and down and beeps.

Press 1x **STOP** button. The product moves 1x up and down and beeps.


Press 1x **STOP** button. The product moves 2x up and down and beeps 3x for confirmation.

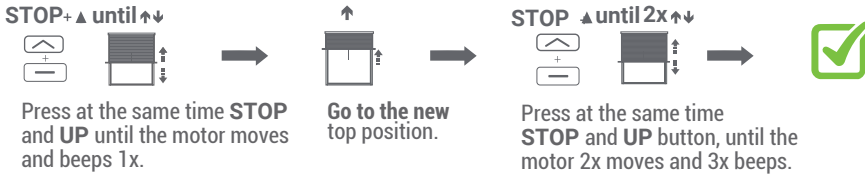
Press and hold **STOP** for 3 seconds to move to the favorite position.

Since the procedure is identical, to remove it repeat the steps.


Additional settings

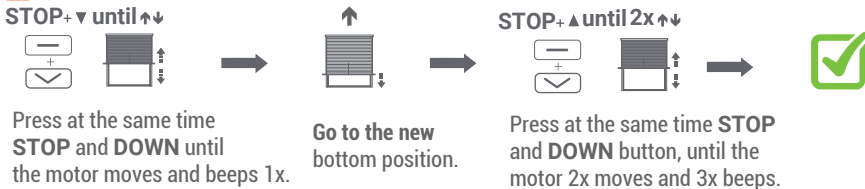
Option A Adjusting the top position

 If adjustment is not possible, go to **Resetting factory settings**.



Adjusting the down position

 If adjustment is not possible, go to **Resetting factory settings**.



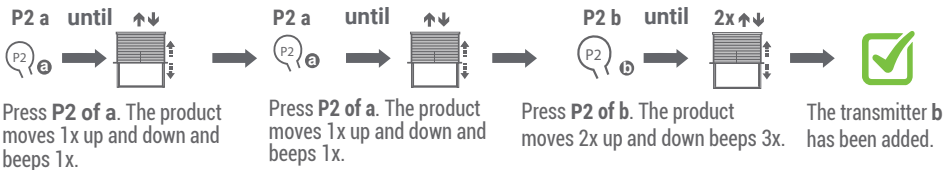
Option B Learn Extra transmitter/channel

Only possible when end limits are set.

a = Already existing transmitter/channel

b = New transmitter/channel

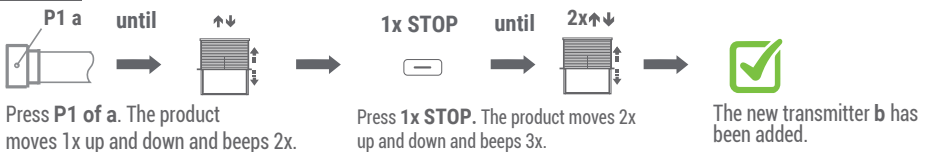
Method 1



 **Make sure the new transmitter is in the desired channel.**

 **To remove the emitter repeat the above procedure.**

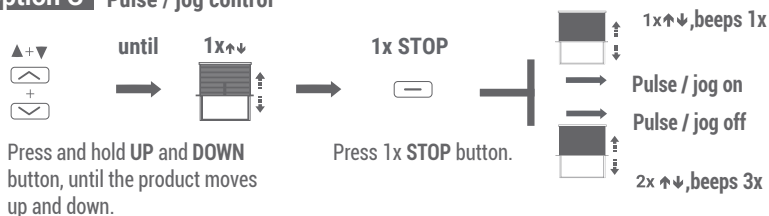
Method 2 (In case the old transmitter is lost or broken)



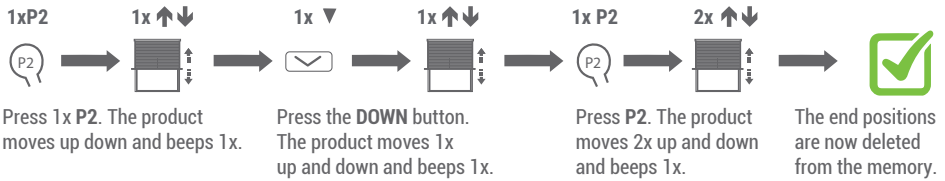
 **Make sure the new transmitter is in the desired channel.**

 **To remove the emitter repeat the above procedure.**

Option C Pulse / jog control



Option B Deleting the end limits

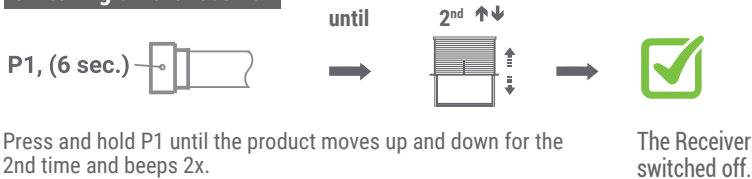


Additional settings P1 button Can be used without a transmitter as an operating button.



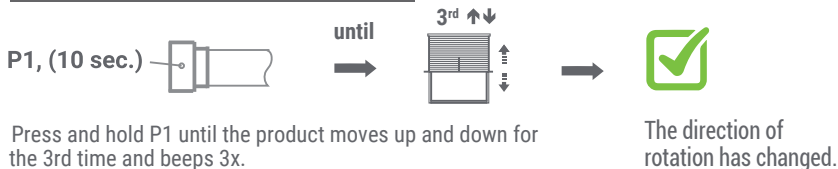
Press 1x P1 on the motor.

Switching off the receiver

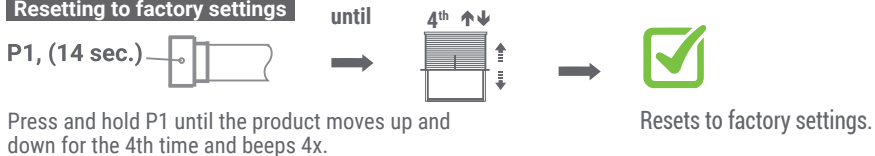


To reactivate the receiver, briefly press P1 once.

Changing the direction of rotation

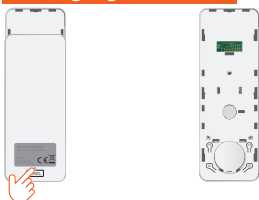


Resetting to factory settings



! To apply new settings: go to step 1

Changing Batteries



Brel Netherlands B.V. is registered according to the transposition of Directive 2012/19/EU (the WEEE Directive) and to the transposition of Directive 2006/66/EC (the Battery Directive) at the Irish registry The Producer Register with the registration number 3408WB.

Brel Netherlands B.V. is registered according to the transposition of Directive 2012/19/EU (the WEEE Directive) into the Act on Waste n.185/2001 in Czech republic with the participation number 09281/20ECZ.